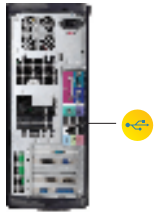


Note: For ESY17A2 and ESY15A2 touchcomputers, the software for the peripheral is already installed on the touchcomputer. For the ET1729L touchmonitor, refer to the following:



Make sure a USB cable is connected to the USB connector on unit.



Connect the other end of the USB cable to a USB port in your computer.



Quick Installation Guide

Installing the Magnetic Stripe Reader (MSR) for 1729/17A2/15A2

Caution:
Before attaching the MSR to your monitor, make sure that power to the monitor and computer is off.



www.elotouch.com



Revision B
P/N E884104

North America
Elo TouchSystem
301 Constitution Drive,
Menlo Park, CA 94025
www.elotouch.com

Elo Technical Support
Online self-help:
www.elotouch.com/go/websupport
Technical Support contacts in your region:
www.elotouch.com/go/contactsupport

Europe
Tel +32 (0)16 35 21 00
Fax +32 (0)16 35 21 01
elosales@elotouch.com

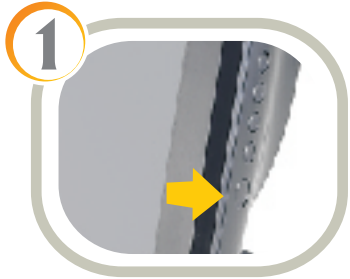
Asia-Pacific
Tel +81 (45) 478-2161
Fax +81 (45) 478-2180
www.tps.co.jp

Latin America
Tel 1-305-428-5210
Fax 1-305-717-4909
www.elotouch.com.ar



Tyco Electronics

Our commitment. Your advantage.



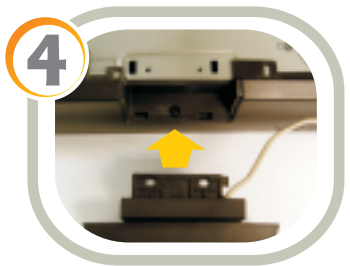
▶▶▶ Turn off power to the unit and computer.



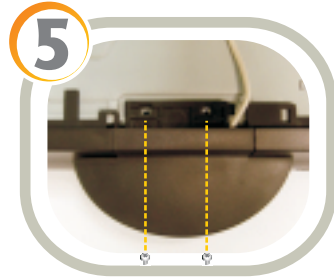
▶▶▶ Turn unit upside down and take off the back cover insert.



▶▶▶ Unsecure the Magnetic Stripe Reader (MSR) door from the unit's right side.



▶▶▶ Place the Magnetic Stripe Reader (MSR) onto the rear of the unit, along the unit's side.



▶▶▶ Secure the Magnetic Stripe Reader (MSR) to the monitor using two screws from the Magnetic Stripe Reader (MSR) Kit.



▶▶▶ Insert the connector of the cable accompanying the MSR into the mating connector on the accessory hub in the rear of the unit.



▶▶▶ Replace the back cover insert.



▶▶▶ Place the unit upright then turn on.