



Note: For ESY17A2 and ESY15A2 touchcomputers, the software for the peripheral is already installed on the touchcomputer. For the ET1729L touchmonitor, refer to the following:

11



▶▶▶ Make sure a USB cable is connected to the USB connector on unit.

12

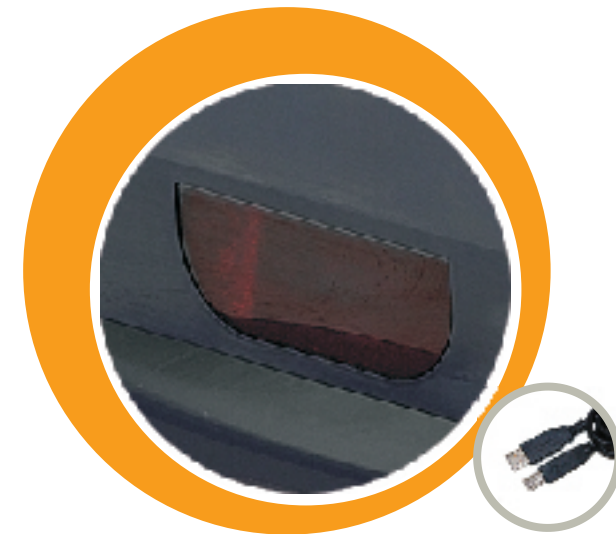


▶▶▶ Connect the other end of the USB cable to a USB port in your computer.



Note: Driver installation necessary for barcode scanner only.

821107900702



# Quick Installation Guide

## Installing the Speaker Bar/Scanner for 1729/17A2/15A2

Caution:  
Before attaching the Speaker Bar to your monitor, make sure that power to the monitor and computer is off.

© 2008 Tyco Electronics.



[www.elotouch.com](http://www.elotouch.com)



Revision B  
P/N E286199

**North America**  
Elo TouchSystem  
301 Constitution Drive,  
Menlo Park, CA 94025  
[www.elotouch.com](http://www.elotouch.com)

**Elo Technical Support**  
Online self-help:  
[www.elotouch.com/go/websupport](http://www.elotouch.com/go/websupport)  
**Technical Support contacts in your region:**  
[www.elotouch.com/go/contactsupport](http://www.elotouch.com/go/contactsupport)

**Europe**  
Tel +32 (0)16 35 21 00  
Fax +32 (0)16 35 21 01  
[elosales@elotouch.com](mailto:elosales@elotouch.com)

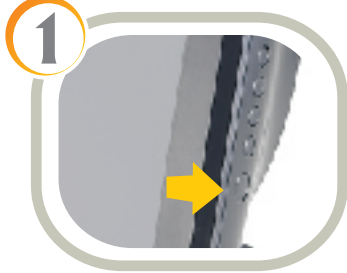
**Asia-Pacific**  
Tel +81 (45) 478-2161  
Fax +81 (45) 478-2180  
[www.tps.co.jp](http://www.tps.co.jp)

**Latin America**  
Tel 1-305-428-5210  
Fax 1-305-717-4909  
[www.elotouch.com.ar](http://www.elotouch.com.ar)



**Tyco Electronics**

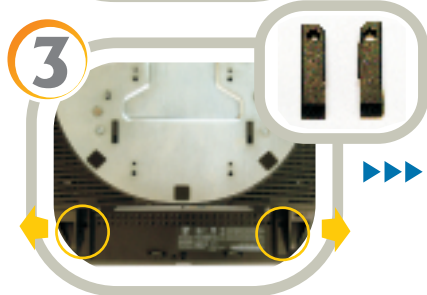
Our commitment. Your advantage.



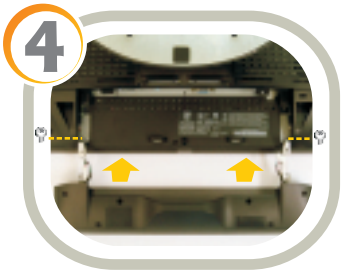
1 Turn off power to the unit and computer.



2 Turn unit upside down and take off the cable cover insert.



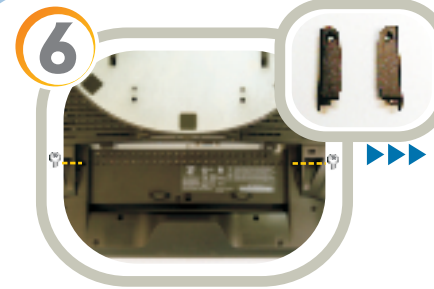
3 Unsecure the left and right accessory covers from the unit's bottom side.



4 Place the Speaker Bar/Scanner onto the rear of the unit, along the unit's bottom side. Secure the Speaker Bar to the unit using two screws from the Speaker Bar/Scanner kit.



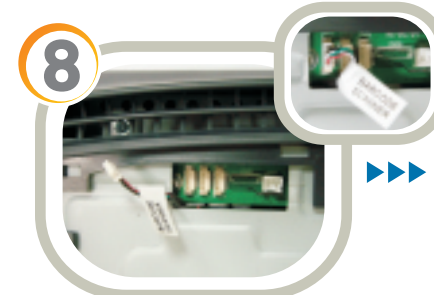
5 Insert the connector of the cable (both of right and left) accompanying the scanner into the mating connector on the accessory hub in the side of the unit.  
Note: If installing only Speaker Bar without scanner, only connector on the right will be present.



6 Secure the left and right accessory covers to the unit using two screws from the Speaker Bar/Scanner kit.  
Note: If installing the Speaker Bar/Scanner on an ESY17A2 or ESY15A2 touchcomputer, skip steps 7-9



7 Take off the back cover insert.



8 Insert the connector of the cable labeled barcode scanner into the mating connector in the accessory hub on the top of the unit.  
Note: If installing only Speaker Bar without scanner, skip this step.



9 Replace the back cover insert and cable cover insert.



10 Place the unit upright then turn on.