

# Updating Display Firmware

for 01 Series Interactive Digital Signage (IDS) products



Elo IDS displays support firmware updates in the field through USB. The purpose of this application note is to describe the firmware update procedure.

## Required Materials:

- A PC with Windows XP or Windows 7
- Video cable (VGA, HDMI or DisplayPort) and USB cable
- Download upgrade utility, Virtual COM port driver and firmware binary file (xxxx.BIN) from <http://www.elotouch.com/Support/Downloads/dnld.asp> in the "Firmware Updates" section

## Step 1: Initial Preparation

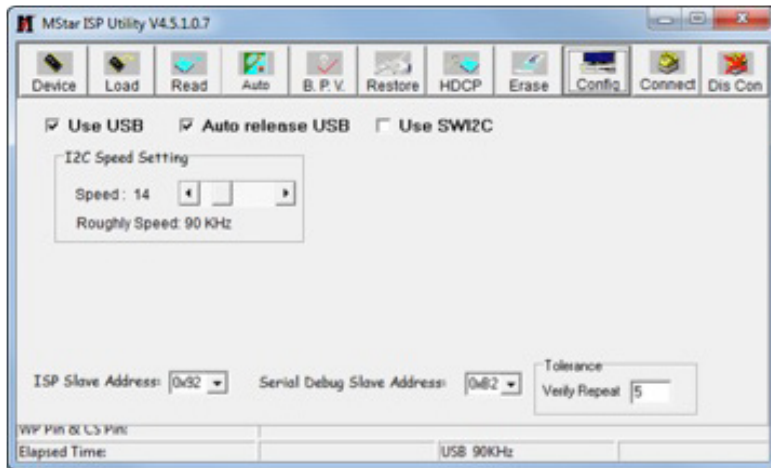
1. Connect video and USB cables from the host PC to the IDS display. Power on the monitor and host PC.
2. Download and install "Virtual COM port driver CP210x\_VCP\_Win\_XP\_S2K3\_Vista\_7.exe"
3. Copy the contents of the "CDM 2.06.00 WHQL Certified" folder to the desktop



Elo founders pioneered the touch screen over 40 years ago. Today, Elo Touch Solutions is a leading global supplier of touch-enabled technology, products and industry solutions.

Elo's Interactive Digital Signage (IDS) products are available in 32" to 70" and include the thinnest (3-3.5") all-in-one commercial touch displays on the market.

## APPLICATION NOTE



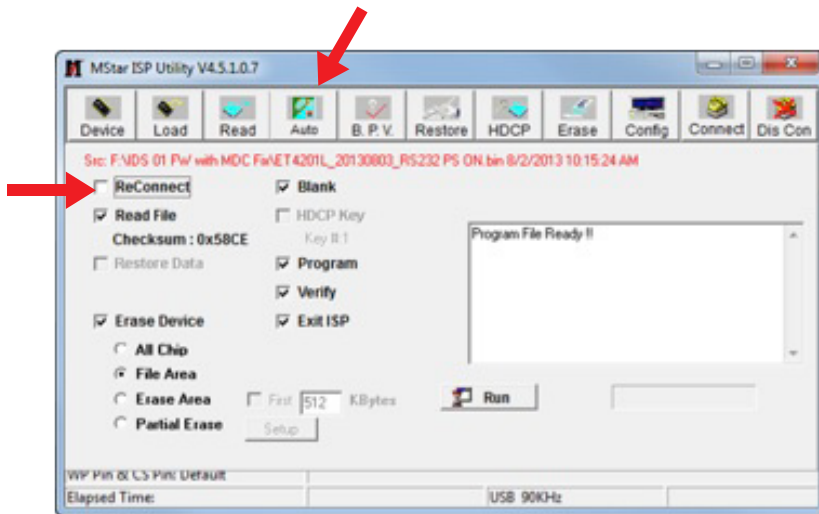
### Step 2: Configure Connection and Speed

1. Click on the Config tab
2. Select the "Use USB" and "Auto release USB" check boxes
3. Set I2C speed to 14

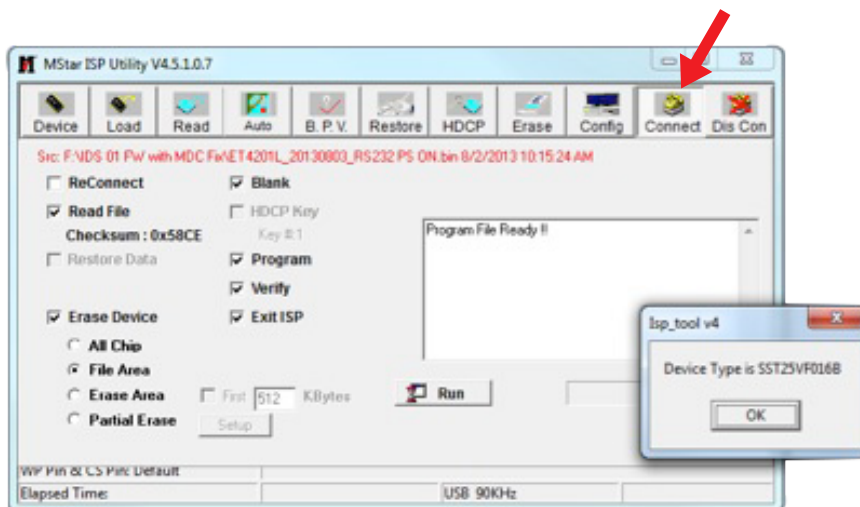


### Step 3: Select New Firmware

1. Click on the Read tab
2. Select the Read button and choose the firmware appropriate for the monitor. Ensure that the "End Addr" is 0x07FFFF

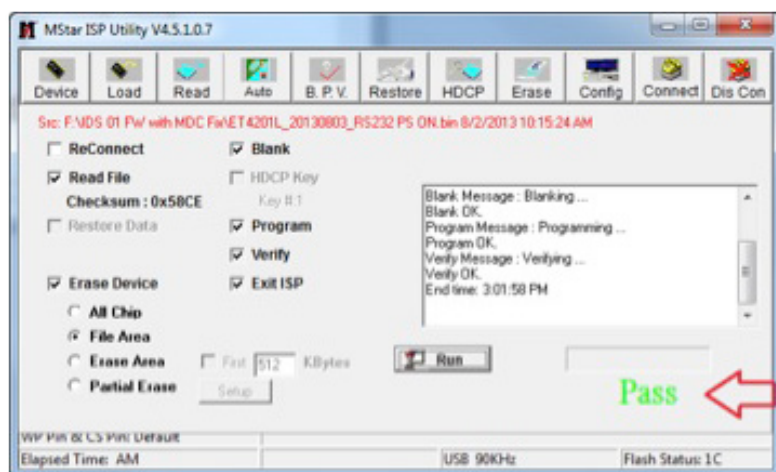


3. Open the "Auto" tab and uncheck the "ReConnect" box



#### Step 4: Download new firmware on the IDS Display

1. Press the Connect tab and allow the application to connect to the device.
2. A pop up stating the Device Type will open. Press OK.



This completes the firmware update process.

3. Select Run. This will start the process of updating the firmware. Please note that this process will take a few minutes. Please do not to unplug any cables or the monitor while firmware is being updated.
4. When the process is complete, the IDS display will conduct a restart. After a monitor restart, you will see PASS in green under the status bar. The firmware will now be updated to the latest firmware.

To find out more about our extensive range of Elo touch solutions, go to [www.elotouch.com](http://www.elotouch.com), or call the office nearest you.

#### North America

Elo Touch Solutions  
1033 McCarthy Boulevard  
Milpitas, CA 95035

#### 800-ELO-TOUCH

Tel +1 408 597 8000  
Fax +1 408 597 8050  
customerservice@elotouch.com

#### Europe

Tel +32 (0)16 70 45 00  
Fax +32 (0)16 70 45 49  
elosales@elotouch.com

#### Asia-Pacific

Tel +86 (21) 3329 1385  
Fax +86 (21) 3329 1400  
www.elotouch.com.cn

#### Latin America

Tel 786-923-0251  
Fax 305-931-0124  
www.elotouch.com

Elo Touch Solutions, Inc. reserves the right to change or update, without notice, any information contained herein; to change, without notice, the design, construction, materials, processing or specifications of any products; and to discontinue or limit production or distribution of any products. Elo (logo) and Elo Touch Solutions are trademarks of Elo Touch Solutions, Inc. Copyright 2013 Elo Touch Solutions, Inc. All rights reserved. SC000021, rev A 10/13

