



elo TOUCH
SOLUTIONS

Designed for touch





Why work with a leader?

Elo Touch Solutions, a pioneer in touchscreen technology, manufactures a complete line of touch solutions that simplify the interface between people and computers. Our solutions are designed for the demanding requirements of diverse markets and applications across the globe.



Leader in innovation and quality

As an inventor of touchscreen technology more than 40 years ago, we have been a pioneer ever since. Today, all our products are designed for touch and come in a wide variety of configurations and forms. Elo Touch Solutions products are state-of-the-art, with high-quality displays, stable, drift-free operation, consistent reliability and durability. And we pay attention to the tiniest details, so our customers consistently receive the best in engineering too.

Leader in touchscreen technology

We have such a wide range of touchscreen technologies we suit virtually any application. For decades, Elo Touch Solutions products have been successfully installed in applications such as cash registers, kiosks, vending machines, process automation or control, medical applications like pharmacies, hospitals and doctor's offices, ATM machines, web phones, and so on. The list is endless....

Leader in service and support

Doing business with us is easy. Our sales and service teams, as well as our distribution partners, are organized to be fast, competent and close to you. Our teams and our partners' teams take care that there is a technical support center or an office nearby, with people who speak your language. And last, but not least, our customization department is dedicated to developing tailor-made solutions at your request.



- 40 years experience in the touchscreen industry
- Broadest offering of touch technologies for virtually any application
- Consistently reliable, accurate, and durable products
- Stable, drift-free operation; scratch-resistant
- Recognized durability and performance
- Wide variety of configurations and form factors for design flexibility
- First-class service and support with worldwide sales people, sales partners, technical support and warehouses
- Custom solutions for special requirements
- Long, worldwide warranties
- Worldwide agency approvals

An overview of our touch solutions



Components

- Touchscreens, touchscreen controllers and drivers
- Wide range of sizes from small to large
- Touchscreen technologies include:
 - Acoustic Pulse Recognition;
 - 5-Wire Resistive;
 - Surface Acoustic Wave;
 - Projected Capacitive;
 - Capacitive;
 - Infrared; and technologies for handheld and mobile applications



Desktop touchmonitors

- Wide range of sizes from 7" to 24"
- Entry-level, multi-function and healthcare models
- Standard and wide-screen formats
- Models with seamless zero-bezel design (uninterrupted surface area)
- Base can be reversed or removed for wall-mount
- Multifunction units with optional peripherals
- Choice of touchscreen technologies, single touch & multi-touch



Open-frame and wall-mount touchmonitors

- Wide range of sizes from 12" to 32"
- Multiple mounting options include rear-mount, VESA mount, panel-mount, front-mount and rack-mount
- Standard and wide-screen formats
- Integrated precision mini-bezel with watertight 0.5mm seal
- Compact and easy to integrate
- Choice of touchscreen technologies, single touch & multi-touch



All-in-One touchcomputers

- 15", 17", 19" and 22"; standard and wide-screen formats
- Space-saving models with computing functionality integrated in the footprint of a standard LCD monitor and models designed for POS and healthcare applications
- Models with seamless zero-bezel design (uninterrupted surface area)
- Field-installable peripherals such as magnetic stripe reader, customer display, finger print reader and barcode scanner
- Choice of touchscreen technologies, single touch & multi-touch



Interactive Digital Signage displays

- 32", 42", 46", 55" and 70"
- Optional field-installable computer modules in various configurations
- Wall-mount, optional stand for desktop use
- Landscape or portrait orientation
- Pure-glass touchscreens for superior image quality
- Choice of touchscreen technologies, single touch & multi-touch

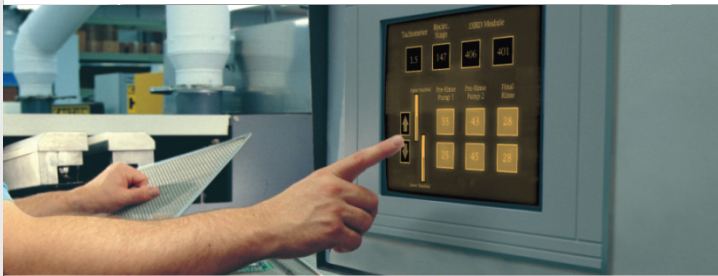
A touchscreen technology for every application

Elo Touch Solutions has the widest portfolio of touchscreen technologies, each optimized for different operating characteristics and environments to suit your application requirements.

Technology



Acoustic Pulse Recognition (APR)



**AccuTouch
Five-wire resistive**



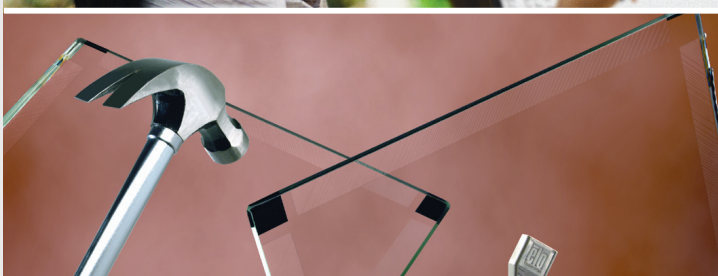
**AccuTouch
Zero-bezel**



**CarrollTouch
Infrared**



**IntelliTouch
Surface acoustic wave**



**SecureTouch
Anti-vandal surface
acoustic wave**

Benefits

- Optics and durability of pure glass
- Works with finger, glove, pen, credit card
- Resistant to water, dust, grease
- No wear-out mechanism
- Works even with scratches
- Zero-bezel design
- Small and large sizes

-
- Stable, drift-free operation
 - Broad input flexibility
 - Contamination resistance
 - Accuracy in high-use applications
 - Long product life
 - Meets NEMA 4/4x/12 and IP 65 standards

-
- Same stable, accurate performance and specifications as standard AccuTouch
 - Eliminates the traditional front bezel that can collect dust and dirt
 - Enables easy integration
 - Reduces material costs as well as supply chain and process complexity

-
- Low profile, high resolution
 - No parallax
 - High durability, vandal resistance, and safety
 - Sealable from contaminants
 - Operates in extreme environments

-
- Pure glass construction delivers the ultimate in image quality
 - Stable, drift-free operation
 - Continues to work even if scratched
 - Sensitive touch response

-
- Tempered, heat or chemically strengthened glass
 - High impact resistance (about 2.5 times stronger than IntelliTouch)
 - Meets UL-60950 ball drop test
 - Privacy filter option

Applications

-
- Restaurant and hospitality automation
 - Point-of-Sale (POS) terminals
 - Pharmacy automation
 - Industrial automation
 - Office automation
 - Interactive digital signage
 - Portable devices

-
- Point-of-Sale (POS) terminals
 - Voting machines
 - Industrial automation
 - Medical equipment
 - Office automation
 - Retail automation
 - Pharmacy automation

-
- Human Machine Interface (HMI) applications (same as standard AccuTouch)

-
- Food processing
 - Industrial automation
 - Medical equipment
 - In-vehicle and transportation
 - Point-of-Sale (POS) terminals

-
- Kiosks
 - Ticketing machines
 - Gaming machines
 - Light industrial
 - Office automation
 - Interactive digital signage

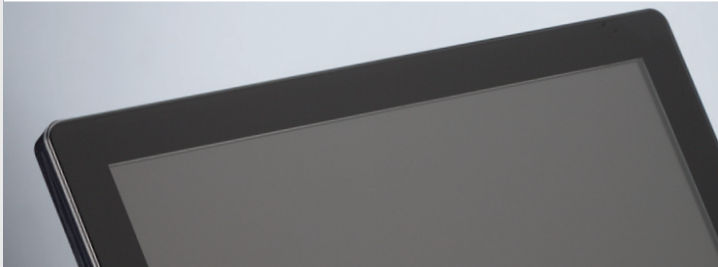
-
- ATMs
 - Ticketing machines
 - Kiosks
-

A touchscreen technology for every application

Technology



IntelliTouch Plus
Surface acoustic wave
with multi-touch capability



iTouch
Zero-bezel surface
acoustic wave



iTouch Plus
Zero-bezel surface
acoustic wave
with multi-touch capability



Surface capacitive



**Projected capacitive
(PCAP)**



Optical touch

Benefits

- Windows 7 Additional Qualification (AQ) compliant for multi-touch interactivity
- Pure glass construction delivers the ultimate in image quality
- Fast, accurate dual-touch response
- Overcomes drawbacks of other multi-touch technologies such as ambient light variances

-
- Completely flat touchscreen, sleek and refined appearance
 - No bezel required for easy integration
 - Same fast, accurate and stable performance as IntelliTouch

-
- Same as for IntelliTouch Plus and iTouch

-
- Elo proprietary narrow Z-border for enhanced linearity
 - Fast, sensitive touch response with excellent dragging performance
 - Compatible with industry standard protocols including Elo SmartSet protocol

-
- Dual-touch
 - Available in zero-bezel fully flat glass front surface
 - No known wear-out mechanism
 - Fast, accurate performance
 - Works with gloves
 - Easy care and cleaning, dust and liquid resistance

-
- Multi-touch response: up to 4 touches
 - Superb transparency and color fidelity
 - No wearing
 - Works with any input device
 - High resolution and accuracy

Applications

- Kiosks
- Gaming machines
- Interactive digital signage

-
- Kiosks
 - Ticketing machines
 - Gaming machines
 - Gaming and amusement
 - Office automation
 - Interactive digital signage

-
- Same as for IntelliTouch Plus and iTouch

-
- Point-of-Sale (POS) terminals
 - Gaming/Amusement
 - Kiosks

-
- Retail & hospitality automation
 - Point-of-Information (POI)
 - Ticketing machines
 - Office automation
 - Kiosks

-
- Interactive digital signage
 - Kiosks
 - Self-service
 - Education, museums
 - Gaming machines
-

Desktop Touchmonitor Product Portfolio

			
<p>Color Contrast ratio Brightness (panel) Viewing angle Touch Technologies</p> <p>Comments</p>	<p>1215L – 12"</p> <p>Grey 500:1 200 nits 140°/100° AccuTouch, IntelliTouch</p>	<p>1515L – 15"</p> <p>Grey or beige 500:1 250 nits 140°/125° Acoustic Pulse Recognition, AccuTouch, IntelliTouch, projected capacitive</p> <p>Field-installable MSR</p>	<p>1517L – 15"</p> <p>Black or white 700:1 250 nits 160°/140° iTouch, AccuTouch</p> <p>Optional MSR, customer display</p>
			
<p>Color Contrast ratio Brightness (panel) Viewing angle Touch Technologies</p> <p>Comments</p>	<p>1519L – 15"</p> <p>Grey 500:1 250 nits 90°/65° Zero-bezel Acoustic Pulse Recognition, AccuTouch, IntelliTouch, projected capacitive, iTouch Field-installable MSR</p> <p>Wide-aspect (16:9)</p>	<p>1523L – 15"</p> <p>Black or white 700:1 250 nits 160°/140° iTouch Plus, projected capacitive</p> <p>Optional MSR, RFID reader, customer display web cam</p>	<p>1529L – 15"</p> <p>Grey or beige 400:1 350 nits 140°/120° Acoustic Pulse Recognition, AccuTouch, IntelliTouch</p> <p>MSR, tall or short base</p>
			
<p>Color Contrast ratio Brightness (panel) Viewing angle Touch Technologies</p> <p>Comments</p>	<p>1715L – 17"</p> <p>Grey 800:1 250 nits 160°/160° Acoustic Pulse Recognition, AccuTouch, IntelliTouch, projected capacitive</p> <p>Field-installable MSR</p>	<p>1717L – 17"</p> <p>Black or white 800:1 250 nits 170°/160° iTouch, AccuTouch</p> <p>Optional MSR, customer display</p>	<p>1723L – 17"</p> <p>Black or white 800:1 250 nits 170°/160° iTouch Plus, projected capacitive</p> <p>MSR, RFID reader, customer display web cam</p>



1729L – 17"



1900L – 19"



1915L – 19"

Color
Contrast ratio
Brightness (panel)
Viewing angle
Touch Technologies

Grey or beige
1000:1
300 nits
160°/160°
AccuTouch, IntelliTouch

Grey or beige
1000:1
250 nits
160°/160°
IntelliTouch

Grey
1000:1
300 nits
160°/155°
Acoustic Pulse Recognition, AccuTouch, IntelliTouch

Comments

MSR, Fingerprint reader, rear display, speakers, barcode scanner

Wide-aspect (16:10)
Also available in 22" (2200L)



1919L – 19"



1919LM – 19"



1928L – 19"

Color
Contrast ratio
Brightness (panel)
Viewing angle
Touch Technologies

Grey
1000:1
250 nits
170°/160°
Zero-bezel Acoustic Pulse Recognition, AccuTouch, IntelliTouch, projected capacitive, iTouch

White
1000:1
300 nits
170°/160°
Zero-bezel Acoustic Pulse Recognition, AccuTouch, IntelliTouch, projected capacitive

Grey or beige
1300:1
300 nits
178°/178°
AccuTouch, IntelliTouch, Acoustic Pulse Recognition

Comments

Wide-aspect (16:9)
Field-installable MSR

For medical applications
also available in 15" (1519LM)

For medical applications:
also available in 15" (1528L)



2201L – 22"



2400LM – 24"

Color
Contrast ratio
Brightness (panel)
Viewing angle
Touch Technologies

Grey
1000:1
250 nits
170°/160°
IntelliTouch Plus, iTouch, projected capacitive

White or grey
1000:1
300 nits
160°/160°
AccuTouch, IntelliTouch

Comments

Wide aspect (16:9)
MSR and webcam options

For medical applications

Open-frame Touchmonitor Product Portfolio



0700L – 7"

1247L – 12"

1537L – 15"

Aspect ratio
Contrast ratio
Brightness (panel)
Viewing angle
Native resolution
Touch Technologies

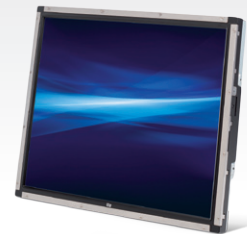
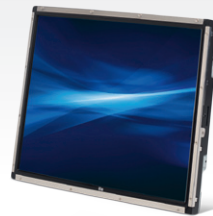
16:9
500:1
200 nits
140°/100°
800 x 480
AccuTouch, no touch

4:3
500:1
350 nits
130°/105°
800 x 600 at 60Hz
IntelliTouch

4:3
500:1
250 nits
140°/115°
1024 x 768 at 60Hz
Acoustic Pulse Recognition, AccuTouch, CarrollTouch, IntelliTouch, SecureTouch

Comments

For use as second customer display or main display for small-screen applications



1541L – 15"

1739L – 17"

1937L – 19"

Aspect ratio
Contrast ratio
Brightness (panel)
Viewing angle
Native resolution
Touch Technologies

16:9
560:1
250 nits
170°/130°
1366 x 768
IntelliTouch Plus, AccuTouch

5:4
1000:1
250 nits
160°/160°
1280 x 1024 at 60Hz
Acoustic Pulse Recognition, AccuTouch, CarrollTouch, IntelliTouch, SecureTouch

5:4
800:1
250 nits
160°/155°
1280 x 1024 at 60Hz
Acoustic Pulse Recognition, AccuTouch, IntelliTouch



1938L – 19"

1939L – 19"

1940L – 19"

Aspect ratio
Contrast ratio
Brightness (panel)
Viewing angle
Native resolution
Touch Technologies

16:10
1000:1
250 nits
160°/160°
1440 x 900 at 60Hz
Acoustic Pulse Recognition, IntelliTouch, SecureTouch

5:4
1300:1
250 nits
178°/178°
1280 x 1024 at 60Hz
Acoustic Pulse Recognition, AccuTouch, CarrollTouch, IntelliTouch, SecureTouch

16:9
1000:1
250 nits
170°/160°
1366 x 768
IntelliTouch Plus, projected capacitive



2239L – 22"



2240L – 22"



2242L – 22"

Aspect ratio
Contrast ratio
Brightness (panel)
Viewing angle
Native resolution
Touch Technologies

16:10
1000:1
300 nits
170°/160°
1680 x 1050 at 75Hz
Acoustic Pulse Recognition, IntelliTouch

16:10
1000:1
400 nits
178°/178°
1680 x 1050 at 60Hz
IntelliTouch

16:10
1000:1
300 nits
160°/160°
1680 x 1050 at 60Hz
IntelliTouch Plus



2243L – 22"



2244L – 22"



3243L – 32"

Aspect ratio
Contrast ratio
Brightness (panel)
Viewing angle
Native resolution
Touch Technologies

16:9
1000:1
250 nits
170°/160°
1920 x 1080
IntelliTouch, Acoustic Pulse Recognition,
IntelliTouch Plus, projected capacitive

16:9
1000:1
250 nits
178°/178°
1920 x 1080
IntelliTouch, Acoustic Pulse Recognition,
IntelliTouch Plus, projected capacitive

16:9
3000:1
350 nits
178°/178°
1920 x 1080
IntelliTouch Plus

All-in-One Touchcomputer Product Portfolio

			
<p>COOL & QUIET 15B2 – 15" and 17B2 – 17"</p>		<p>PERFORMANCE ULTRA 15B3 – 15" and 17B3 – 17"</p>	<p>15D1 – 15" and 17D1 – 17"</p>
<p>Processor Memory Hard drive Operating systems Touch Technologies Comments</p>	<p>Intel Atom 1.83GHz Dual-Core N2800 2GB DDR3 (upgradeable to 4GB) 320GB Windows 7, Windows XP, no OS iTouch Plus, AccuTouch Fan-less, optional MSR, customer display, fingerprint reader, wireless, SSD, 2nd HDD</p>	<p>Intel 3.0GHz i3-3220 (Ivy Bridge) 2GB DDR3 (upgradeable to 8GB) 320GB Windows 7, Windows XP, no OS iTouch Plus, AccuTouch Fan-less, optional MSR, customer display, fingerprint reader, wireless, SSD, 2nd HDD, RAID</p>	<p>Intel Dual-Core Celeron 2.2GHz 2GB DDR3 (upgradeable to 4GB) 320GB Windows XP, Windows 7, POS Ready 2009, no OS AccuTouch, IntelliTouch MSR, fingerprint reader, rear display, barcode scanner, 2nd hard drive</p>
			
<p>19MR1 – 19"</p>		<p>19C2 – 19" and 22C2 – 22"</p>	<p>19C3 – 19" and 22C3 – 22"</p>
<p>Processor Memory Hard drive Operating systems Touch Technologies Comments</p>	<p>Intel Atom Dual-Core 1.6GHz 1GB 160GB Windows 7, Windows XP, no OS Zero-bezel Acoustic Pulse Recognition For medical applications</p>	<p>Intel Atom 1.83GHz Dual-Core N2800 2GB DDR3 (upgradeable to 4GB) 320GB Windows 7, Windows XP, no OS iTouch Plus, AccuTouch Fan-less, optional MSR, customer display, fingerprint reader, wireless, SSD, 2nd HDD</p>	<p>Intel 3.0GHz i3-3220 (Ivy Bridge) 2GB DDR3 (upgradeable to 8GB) 320GB Windows 7, Windows XP, no OS iTouch Plus, AccuTouch Fan-less, optional MSR, customer display, fingerprint reader, wireless, SSD, 2nd HDD, RAID</p>
			
<p>19CM2 – 19" and 22CM2 – 22"</p>		<p>VuPoint M-Series – 19"</p>	
<p>Processor Memory Hard drive Operating systems Touch Technologies Comments</p>	<p>Intel Atom Dual-Core 1.66GHz 2GB 160GB Windows 7, No OS AccuTouch, iTouch, IntelliTouch Plus For medical applications. Also available with Intel Core 2 Duo 3.0GHz.</p>	<p>Intel 1.1GHz Celeron Dual Core 847E 4GB DDR3 320GB No OS Projected capacitive (AccuTouch on request) For medical applications. Also available in 15" with 1.8GHz Dual Core Atom processor</p>	

Interactive Digital Signage (IDS) Product Portfolio



3200L – 32"

4200L – 42"

4600L – 46"

Enclosure
Aspect ratio
Form factor
Contrast ratio
Brightness (typical)
Viewing angle
Touch Technologies

Dark grey; operational in portrait or landscape mode
 16:9
 Wall mount with optional desktop stand
 3500:1
 405 nits
 178°/178°
 IntelliTouch Plus

Dark grey; operational in portrait or landscape mode
 16:9
 Wall mount with optional desktop stand
 3500:1
 405 nits
 178°/178°
 IntelliTouch, Optical

Dark grey; operational in portrait or landscape mode
 16:9
 Wall mount with optional desktop stand
 3000:1
 405 nits
 178°/178°
 IntelliTouch, Optical

Comments

True High Definition (HD) 720p (1366 x 768); optional webcam; analog VGA and HDCP-capable HDMI 1.3, video; two 10W speakers

True High Definition (HD) 1080p (1920 x 1080); optional webcam; analog VGA and HDCP-capable HDMI 1.3, video; two 10W speakers

True High Definition (HD) 1080p (1920 x 1080); optional webcam; analog VGA and HDCP-capable HDMI 1.3, video; two 10W speakers



5500L – 55"

7001L – 70"

Enclosure
Aspect ratio
Form factor
Contrast ratio
Brightness (typical)
Viewing angle
Touch Technologies

Dark grey; operational in portrait or landscape mode
 16:9
 Wall mount with optional desktop stand
 4000:1
 405 nits
 178°/178°
 IntelliTouch, Optical

Black; operational in portrait or landscape mode
 16:9
 Wall mount with optional desktop stand
 5000:1
 630 nits
 176°/176°
 Optical

Comments

True High Definition (HD) 1080p (1920 x 1080); optional webcam, LED backlights; analog VGA and HDCP-capable HDMI 1.3; two 10W speakers.

Full HD, analog VGA and HDCP-capable HDMI 1.3, video; four 5W speakers



IDS Computer Module

Designed specifically for the Elo IDS touch displays. No cables required; seamless docking integration.

ECM1 Module:
 Intel Celeron Dual-Core 2.2GHz, 1GB, 160GB, Windows XP, Windows 7, no OS

ECM2 Module:
 Intel Core 2 Duo 3.0GHz, 2GB, 160GB, Windows XP, Windows 7, no OS

ECM3 Module:
 Intel i5 2.50GHz, 4GB, 320GB, Windows 7, no OS



To find out more about our extensive range of Elo touch solutions, go to www.elotouch.com, or call the office nearest you.

North America

Elo Touch Solutions
301 Constitution Drive
Menlo Park, CA 94025-1110

800-ELO-TOUCH
Tel 1-650-361-4800
Fax 1-650-361-4722
www.elotouch.com

Europe

Tel +32 (0)16 35 21 00
Fax +32 (0)16 35 21 01
www.elotouch.co.uk
www.elotouch.de
www.elotouch.fr

Asia-Pacific

Tel +81 (45) 478-2161
Fax +81 (45) 478-2180
www.tps.co.jp
www.elotouch.com.cn

Latin America

Tel 786-923-0251
Fax 305-931-0124
www.elotouch.com.ar
www.elotouch.com.br

Medical and Healthcare Application Disclaimer: It is the sole responsibility of any person intending to commercialize, market or use any of Elo Touch Solutions, Inc. or its family of companies ("Elo") products for medical or healthcare applications to ensure that such product is adequate and appropriate for the person's intended use and complies with all applicable laws, regulations, codes and standards including but not limited to the European Union Medical Device Directive, United States Federal Food, Drug, and Cosmetic Act, regulations of the United States Food and Drug Administration (FDA), and other similar legislation in jurisdictions around the world, and for obtaining and maintaining any required regulatory approvals including but not limited to any required market clearances. Elo has not sought nor received any rulings from the FDA or any other federal, state, or local government agency or notified body as to the safety, effectiveness or appropriateness of its product for such applications. Persons intending to evaluate or use Elo's product for medical or healthcare purposes must rely on their own medical and legal judgment without any representation on the part of Elo.

Elo Touch Solutions, Inc. reserves the right to change or update, without notice, any information contained herein; to change, without notice, the design, construction, materials, processing or specifications of any products; and to discontinue or limit production or distribution of any products. AccuTouch, CarrollTouch, Elo (logo), Elo Touch Solutions, IntelliTouch and iTouch are trademarks of Elo Touch Solutions, Inc. Windows is a trademark of Microsoft Corporation.

Copyright 2013 Elo Touch Solutions, Inc. All rights reserved. 01/2013.