



## Quick Installation Guide

**3200L 32" interactive digital signage touchmonitor**  
**4200L 42" interactive digital signage touchmonitor**  
**4600L 46" interactive digital signage touchmonitor**  
**5200L 52" interactive digital signage touchmonitor**

© 2010 Tyco Electronics. All rights reserved.  
Elo TouchSystems, TE logo and Tyco Electronics are trademarks.



[www.elotouch.com](http://www.elotouch.com)



Revision A  
P/N E896920

**North America**  
Elo TouchSystems  
301 Constitution Drive  
Menlo Park, CA 94025  
[www.elotouch.com](http://www.elotouch.com)  
1-800-557-1458

**Elo Technical Support**  
**Online self-help:**  
[www.elotouch.com/go/websupport](http://www.elotouch.com/go/websupport)  
**Technical Support contacts in your region:**  
[www.elotouch.com/go/contactsupport](http://www.elotouch.com/go/contactsupport)

**Europe**  
Tel +32 (0)16 35 21 00  
Fax +32 (0)16 35 21 01  
[elosales@elotouch.com](mailto:elosales@elotouch.com)

**Asia-Pacific**  
Tel +81 (45) 478-2161  
Fax +81 (45) 478-2180  
[www.tps.co.jp](http://www.tps.co.jp)

**Latin America**  
[www.elotouch.com.ar](http://www.elotouch.com.ar)

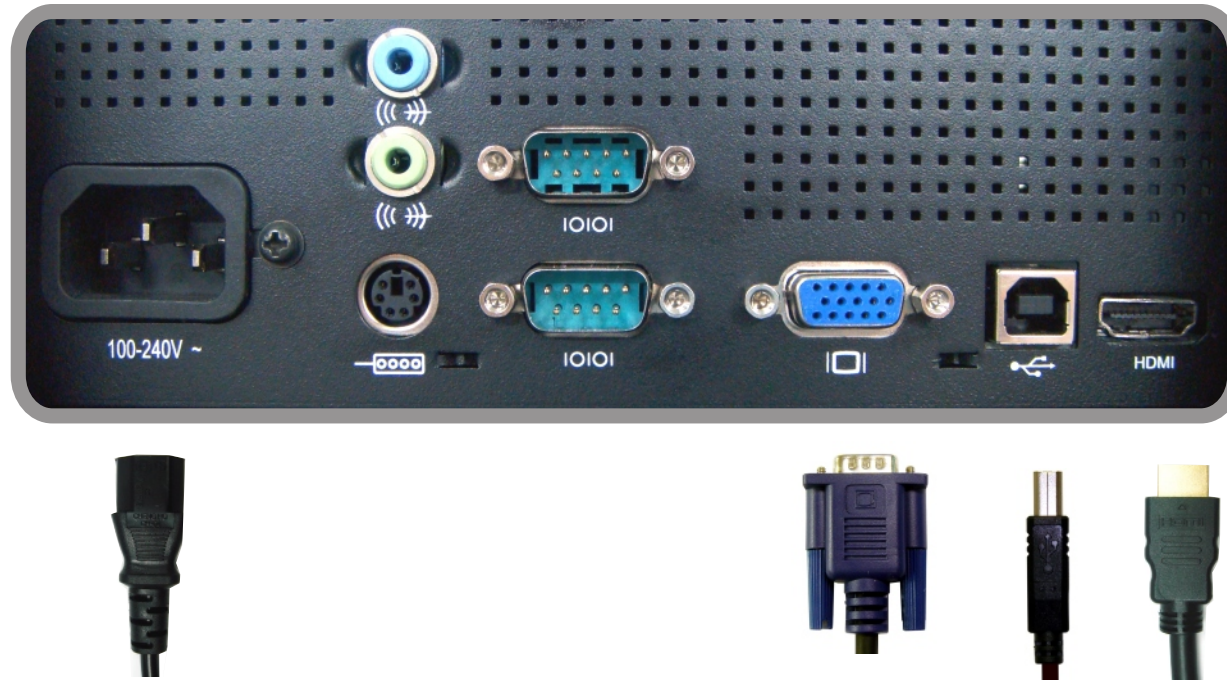
For current Elo news, product updates and announcements, register to receive our TouchMonitor newsletter at [www.elotouch.com/go/news](http://www.elotouch.com/go/news)



 **Tyco Electronics**

Our commitment. Your advantage.

## 1 Connect Cables

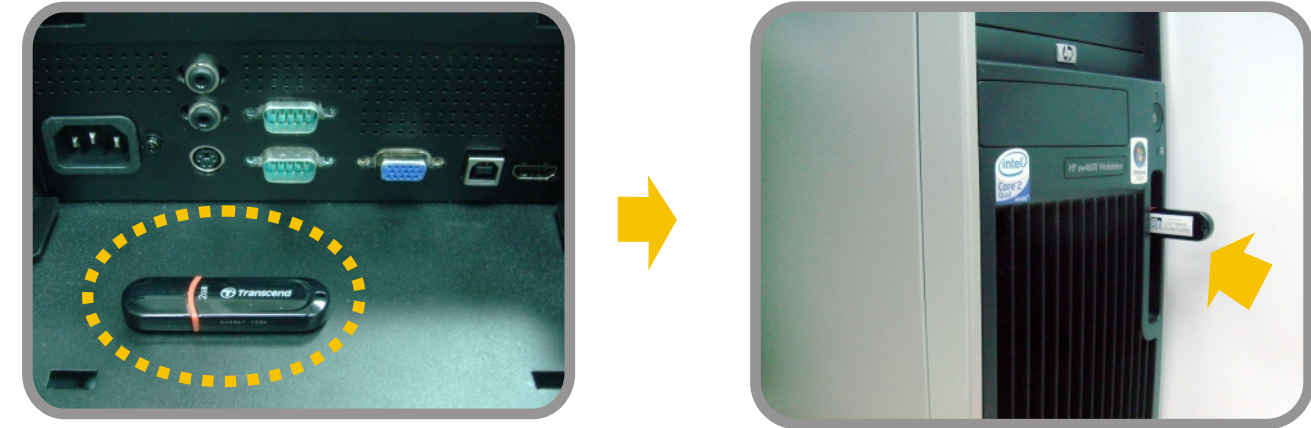


## 2 Install driver onto your computer

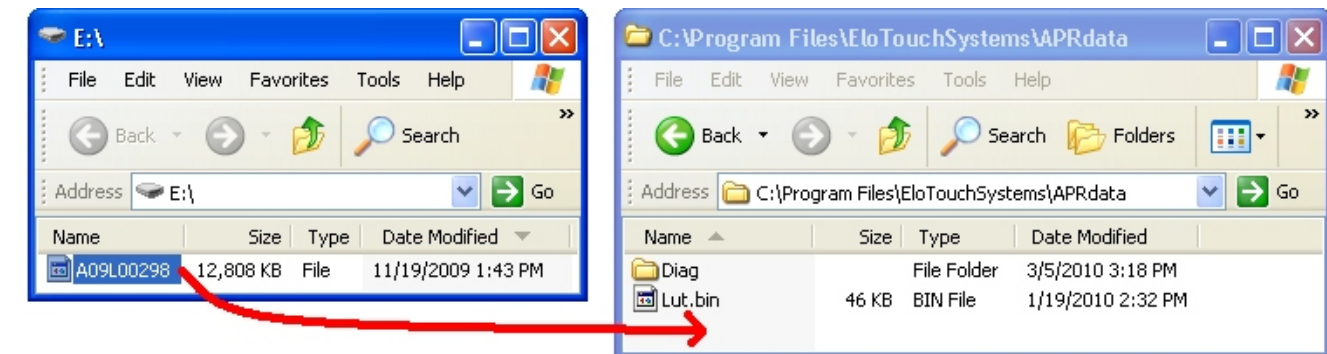


## 3 Install the APR Calibration file onto your computer

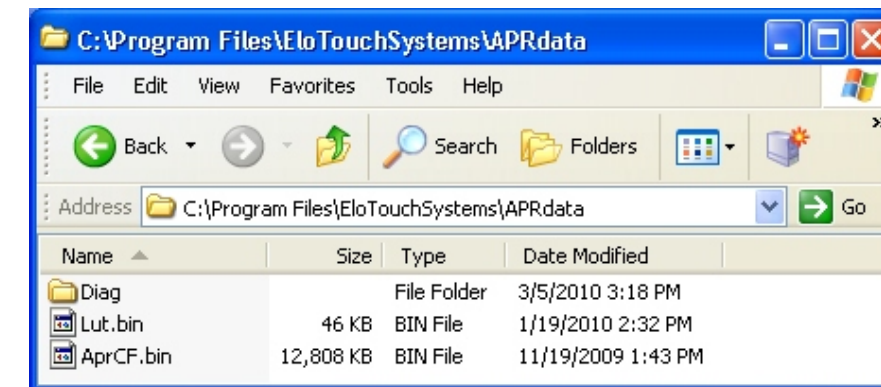
- a) Insert the touchmonitor's USB memory stick into your computer's available USB port



- b) Copy the monitor's APR calibration file from the Calibration USB drive to the folder: C:\Program Files\EloTouchsystems\APRdata



- c) In the APRdata folder, rename the file to "AprCF.bin".



- d) Reboot your computer.

**Keep this monitor's USB memory stick or Calibration file in a safe place. DO NOT LOSE THE CALIBRATION FILE! It is unique to your touchmonitor, and is required for your touchmonitor to function. You will need this file again if you connect this touchmonitor to a different computer, or if you reinstall touch drivers on the same computer.**