

9



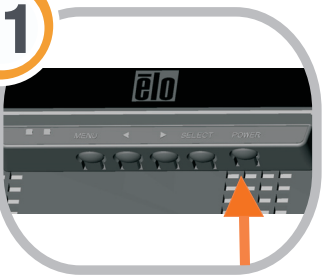
▶▶▶ Replace the front door.

10



▶▶▶ Replace the side door.

11



▶▶▶ Turn on the touchcomputer.

Included Items:

- Fingerprint reader module (includes cable with USB Type-A connector)
- Two screws to attach module to chassis

Note: For the 15D1 touchcomputer, the software for the field-installable peripherals is already pre-installed.



Quick Installation Guide

Installing the Fingerprint Reader (FPR) for the 15D1 Touchcomputer

Caution:
Before attaching the fingerprint reader, make sure that the touchcomputer is powered off.

© 2009 Tyco Electronics.



www.elotouch.com



Revision A
P/N E924688

North America
Elo TouchSystem
301 Constitution Drive,
Menlo Park, CA 94025
www.elotouch.com

Elo Technical Support
Online self-help:
www.elotouch.com/go/websupport
Technical Support contacts in your region:
www.elotouch.com/go/contactsupport

Europe
Tel +32 (0)16 35 21 00
Fax +32 (0)16 35 21 01
elosales@elotouch.com

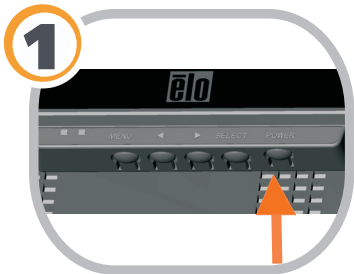
Asia-Pacific
Tel +81 (45) 478-2161
Fax +81 (45) 478-2180
www.tps.co.jp

Latin America
Tel 1-305-428-5210
Fax 1-305-717-4909
www.elotouch.com.ar



Tyco Electronics

Our commitment. Your advantage.



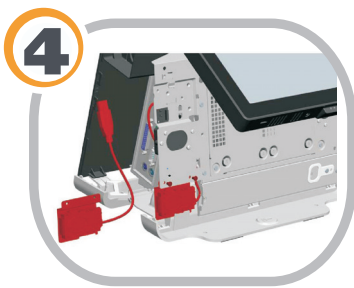
▶▶▶ Turn off the power to the touchcomputer.



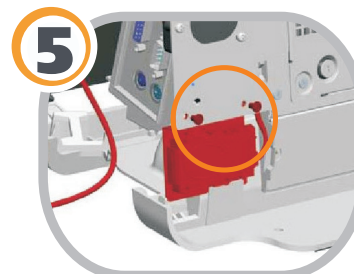
▶▶▶ Remove the side door, as shown.



▶▶▶ Remove the front door.



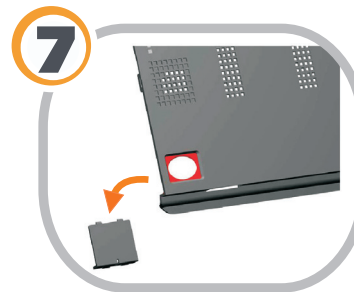
▶▶▶ Insert the fingerprint reader module into the chassis.



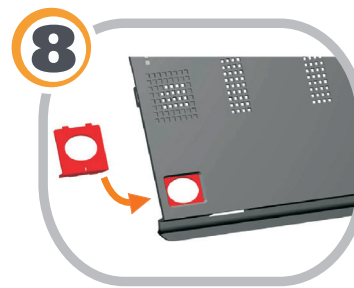
▶▶▶ Add two screws to hold it in place.



▶▶▶ Connect the USB cable to the USB connector.



▶▶▶ Remove the existing cover from the front door on the left side.



▶▶▶ Add the fingerprint reader cover.