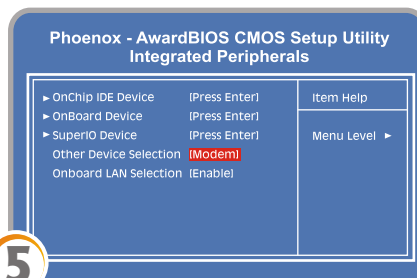
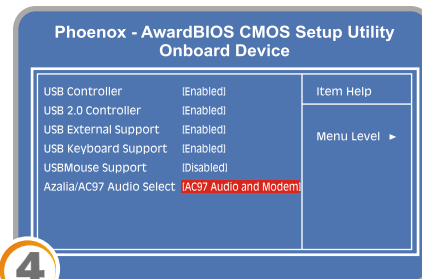
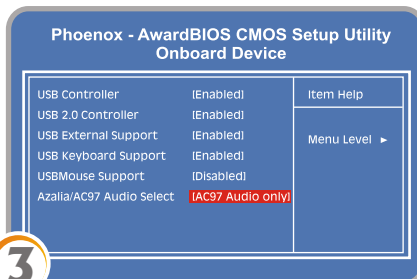
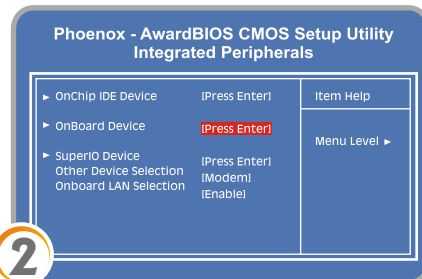
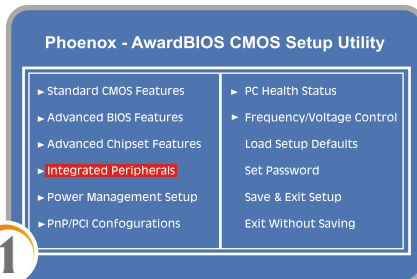


10

Reconnect the power adapter, connect a keyboard and power on the touchcomputer. While the TE logo is displayed, press the "Del" key to enter the BIOS setup menu. Follow the below screen shots to configure the modem card setting.



When modem setup is complete, press "F10" and then the "Enter" key to save settings and restart the touchcomputer.



11



Insert the software CD into the DVD drive (or USB DVD drive) and follow the instructions to complete the modem card software installation.

Quick Installation Guide

Installing additional Modem Card for the 15A2



www.elotouch.com

North America
 Elo TouchSystem
 301 Constitution Drive,
 Menlo Park, CA 94025
 www.elotouch.com

Elo Technical Support
 Online self-help:
www.elotouch.com/go/websupport
Technical Support contacts in your region:
www.elotouch.com/go/contactsupport

Europe
 Tel +32 (0)16 35 21 00
 Fax +32 (0)16 35 21 01
 elosales@elotouch.com

Asia-Pacific
 Tel +81 (45) 478-2161
 Fax +81 (45) 478-2180
 www.tps.co.jp

Revision A
 P/N E854457

Latin America
 Tel 1-305-428-5210
 Fax 1-305-717-4909
 www.elotouch.com.ar

For current Elo news, product updates and announcements, register to receive our TouchMonitor newsletter at www.elotouch.com/go/news



Tyco Electronics
 Our commitment. Your advantage.

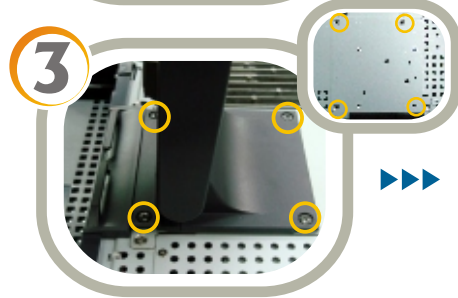
- Note:
- Always handle the component by its edges.
 - Installer must be electrically grounded while performing installation steps.



▶▶▶ Turn off power to the touchcomputer and unplug the power adapter from the unit.



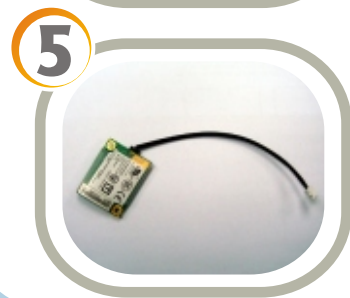
▶▶▶ Carefully place the touchcomputer facedown on a soft, flat surface. Turn touchcomputer upside down and take off the back cover insert.



▶▶▶ Remove the four screws connecting the stand to the chassis. Once these screws are removed, the stand will come off. Then remove the four screws on the chassis.



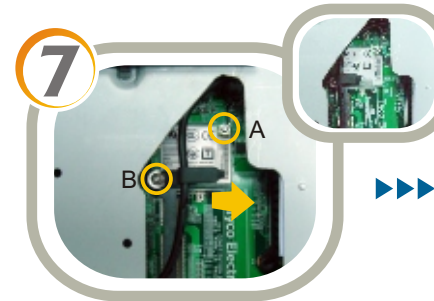
▶▶▶ Adjust the cable clip, then unscrew the nut and cable clip.



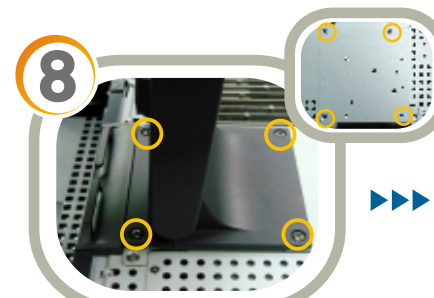
▶▶▶ Take the provided RJ11 cable and connect it to the modem card.



▶▶▶ Align the pins on the modem card with the connector on the PC board and press together until it locks into place. Connect the RJ11 cable to the connector on the main board as shown.



▶▶▶ Replace the cable clip and nut. Use the additional provided nut to further secure the modem. Ensure that the cable clip neatly holds the internal cable as shown.



▶▶▶ Reinstall the four screws to close the chassis and then reinstall the stand using the screws removed in Step 3.



▶▶▶ Replace the back cover insert.