




Note: For ESY17A2 and ESY15A2 touchcomputers, the software for the peripheral is already installed on the touchcomputer. For the ET1729L touchmonitor, refer to the following:

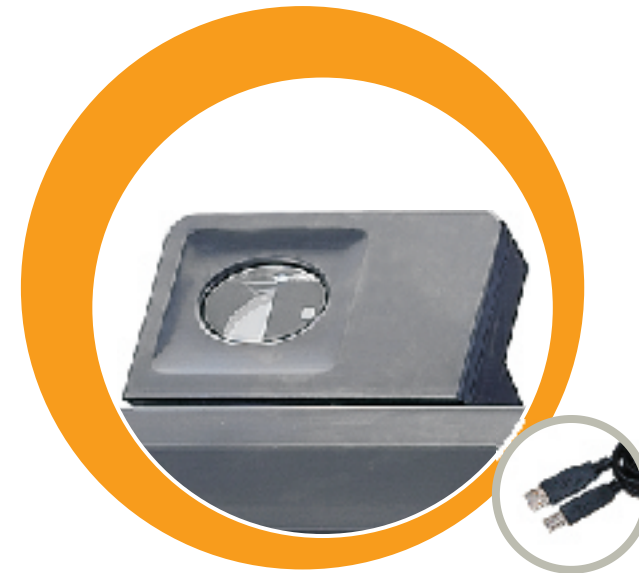
Make sure a USB cable is connected to the USB connector on monitor.

Connect the other end of the USB cable to a USB port in your computer.

\*For necessary drivers please refer to:

D:\Touch Monitor Peripherals\Fingerprint Reader\Fingerprint Reader 1729 17A2\Drivers\

Note: "D" refers to the drive in which the TouchTools CD is located.



# Quick Installation Guide

## Installing the Biometric FPR for 1729/17A2/15A2

Caution:  
Before attaching the Biometric FPR to your monitor, make sure that power to the monitor and computer is off.

© 2008 Tyco Electronics.



[www.elotouch.com](http://www.elotouch.com)



Revision B  
P/N E815320

**North America**  
Elo TouchSystem  
301 Constitution Drive,  
Menlo Park, CA 94025  
[www.elotouch.com](http://www.elotouch.com)

**Elo Technical Support**  
**Online self-help:**  
[www.elotouch.com/go/websupport](http://www.elotouch.com/go/websupport)  
**Technical Support contacts in your region:**  
[www.elotouch.com/go/contactsupport](http://www.elotouch.com/go/contactsupport)

**Europe**  
Tel +32 (0)16 35 21 00  
Fax +32 (0)16 35 21 01  
[elosales@elotouch.com](mailto:elosales@elotouch.com)

**Asia-Pacific**  
Tel +81 (45) 478-2161  
Fax +81 (45) 478-2180  
[www.tps.co.jp](http://www.tps.co.jp)

**Latin America**  
Tel 1-305-428-5210  
Fax 1-305-717-4909  
[www.elotouch.com.ar](http://www.elotouch.com.ar)



**Tyco Electronics**

Our commitment. Your advantage.

1



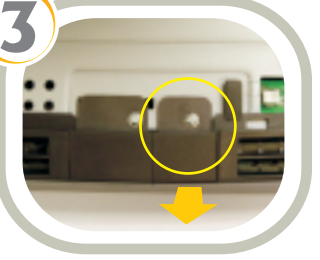
Turn off power to the unit and computer.

2



Turn unit upside down and take off the back cover insert

3



Unsecure the Biometric FPR door from the unit's top side.

4



Place the Biometric FPR onto the rear of the unit, along the unit's top side.

5



Secure the Biometric FPR to the unit using two screws from the Biometric FPR Kit.

6



Insert the connector of the cable accompanying the Biometric FPR into the mating connector on the accessory hub in the rear of the unit.

7



Replace the back cover insert.

8



Place the unit upright then turn on.