



Quick Installation Guide

2240L 22-inch LCD Touchmonitor Series



www.elotouch.com



Revision A
P/N E785851

North America
Elo TouchSystems
301 Constitution Drive
Menlo Park, CA 94025
(800) ELO-TOUCH (800-356-8682)
www.elotouch.com

Elo Technical Support
Online self-help:
www.elotouch.com/go/websupport
Technical Support contacts in your region:
www.elotouch.com/go/contactsupport

Europe
Tel +32 (0)16 35 21 00
Fax +32 (0)16 35 21 01
elosales@elotouch.com

Asia-Pacific
Tel +81 (45) 478-2161
Fax +81 (45) 478-2180
www.tps.co.jp

Latin America
Tel 1-305-428-5210
Fax 1-305-717-4909
www.elotouch.com.ar

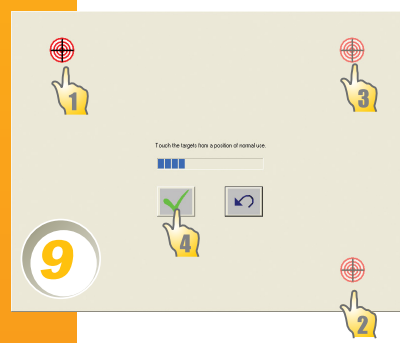
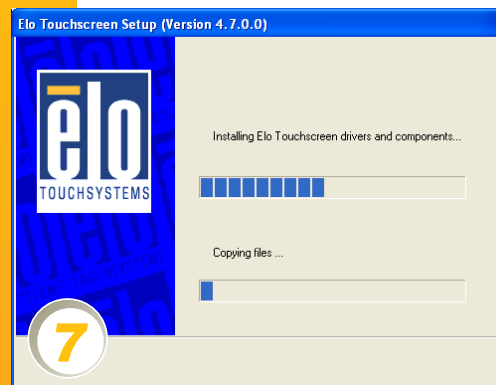
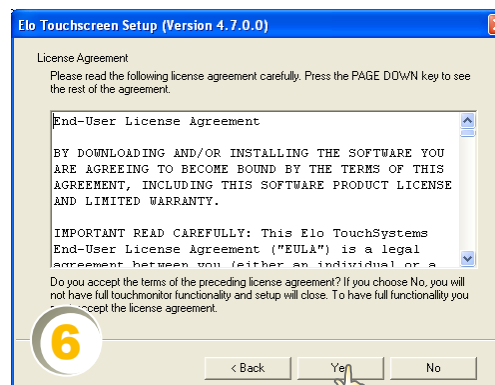
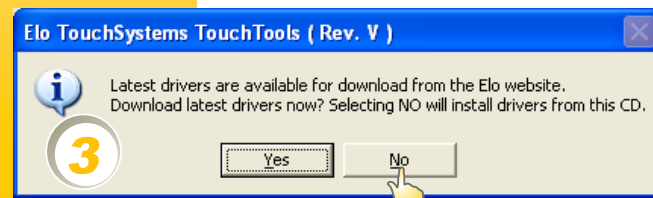
For current Elo news, product updates and announcements, register to receive our TouchMonitor newsletter at www.elotouch.com/go/news



TouchTools CD

IntelliTouch and Surface Capacitive Versions





Non-Touch Version



Notes:

- Some models do not include DVI
- Optional remote OSD controller available

© 2008 Tyco Electronics



www.elotouch.com

North America
Elo TouchSystems
301 Constitution Drive
Menlo Park, CA 94025
(800) ELO-TOUCH (800-356-8682)
www.elotouch.com

Elo Technical Support
Online self-help:
www.elotouch.com/go/websupport
Technical Support contacts in your region:
www.elotouch.com/go/contactsupport

Europe
Tel +32 (0)16 35 21 00
Fax +32 (0)16 35 21 01
elosales@elotouch.com

Asia-Pacific
Tel +81 (45) 478-2161
Fax +81 (45) 478-2180
www.tps.co.jp

Revision A
P/N E785851

Latin America
Tel 1-305-428-5210
Fax 1-305-717-4909
www.elotouch.com

For current Elo news, product updates and announcements, register to receive our TouchMonitor newsletter at www.elotouch.com/go/news

