




Note: For ESY17A2 and ESY15A2 touchcomputers, the software for the peripheral is already installed on the touchcomputer. For the ET1729L touchmonitor, refer to the following:



▶▶▶ Make sure a USB cable is connected to the USB connector on unit.



▶▶▶ Connect the other end of the USB cable to a USB port in your computer.



Quick Installation Guide

Installing the Customer Display for 1729/17A2/15A2

Caution:
Before attaching the Customer Display to your monitor, make sure that power to the monitor and computer is off.

© 2008 Tyco Electronics.



www.elotouch.com



Revision B
P/N E605258

North America
Elo TouchSystem
301 Constitution Drive,
Menlo Park, CA 94025
www.elotouch.com

Elo Technical Support
Online self-help:
www.elotouch.com/go/websupport
Technical Support contacts in your region:
www.elotouch.com/go/contactsupport

Europe
Tel +32 (0)16 35 21 00
Fax +32 (0)16 35 21 01
elosales@elotouch.com

Asia-Pacific
Tel +81 (45) 478-2161
Fax +81 (45) 478-2180
www.tps.co.jp

Latin America
Tel 1-305-428-5210
Fax 1-305-717-4909
www.elotouch.com.ar



Tyco Electronics

Our commitment. Your advantage.

1



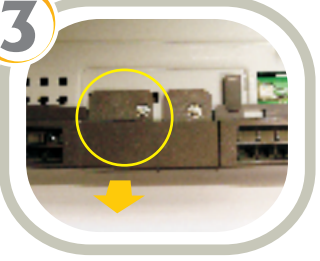
▶▶▶ Turn off power to the unit and computer.

2



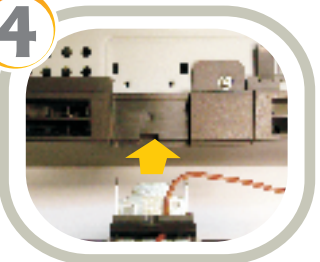
▶▶▶ Turn unit upside down and take off the back cover insert.

3



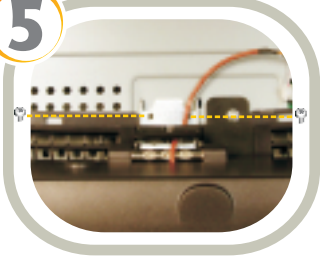
▶▶▶ Unsecure the Customer Display door from the unit's top side.

4



▶▶▶ Place the Customer Display onto the rear of the unit, along the unit's top side.

5



▶▶▶ Secure the Customer Display to the unit using two screws from the Customer Display Kit.

6



▶▶▶ Insert the connector of the cable accompanying the Customer Display into the mating connector on the accessory hub in the rear of the unit.

7



▶▶▶ Replace the back cover insert.

8



▶▶▶ Place the unit upright then turn on.