

Quick Installation Guide

*Installing the memory module for the
D-Series Touchcomputer*

Caution:
The touch computer must be unplugged before any installation occurs.

Included Items:

- E309480 includes one 1GB DDR2 Memory DIMM, 800MHz
- E355477 includes one 2GB DDR2 Memory DIMM, 800MHz
- E331130 includes one 4GB DDR2 Memory DIMM, 800MHz



www.elotouch.com



Revision A
P/N E223906

North America
Elo TouchSystem
301 Constitution Drive,
Menlo Park, CA 94025
www.elotouch.com

Elo Technical Support
Online self-help:
www.elotouch.com/go/websupport
Technical Support contacts in your region:
www.elotouch.com/go/contactsupport

Europe
Tel +32 (0)16 35 21 00
Fax +32 (0)16 35 21 01
elosales@elotouch.com

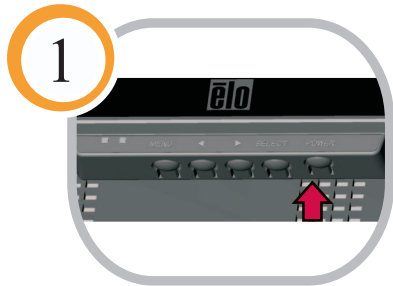
Asia-Pacific
Tel +61 (45) 478-2161
Fax +61 (45) 478-2180
www.tps.co.jp

Latin America
Tel 1-305-428-5210
Fax 1-305-717-4909
www.elotouch.com.ar



Tyco Electronics
Our commitment. Your advantage.





1

▶▶▶ Turn off the touchcomputer.



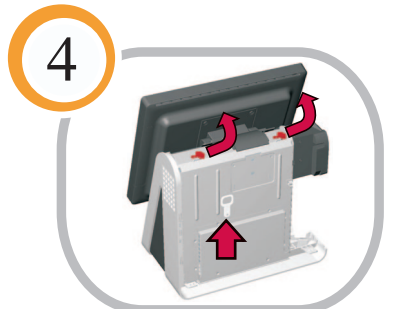
2

▶▶▶ Remove the side door



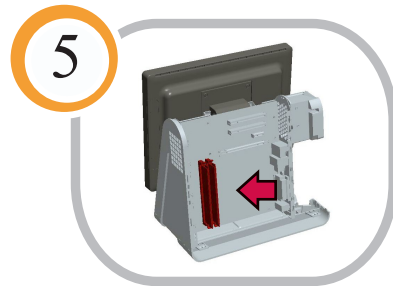
3

▶▶▶ Remove the back door



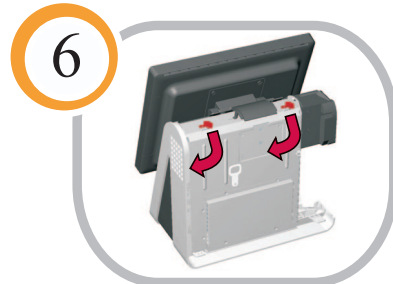
4

▶▶▶ Pivot the two latches to unlock the chassis cover, then lift up on the tab to remove the cover.



5

▶▶▶ Insert memory module into an available socket, or replace an existing module.



6

▶▶▶ Reinstall the chassis cover and rotate the latches to lock it in place.



7

▶▶▶ Reinstall the back door.



8

▶▶▶ Reinstall the side door.