

9



OR



Connect one end of the RJ phone cord to the scanner and connect the other end to the cradle assembly. Place the scanner in the cradle.

Note: Choose the desirable RJ cable length.

Included Items:

- Bracket (includes holster and cable with USB Type-A connector)
- Two screws to attach bracket to chassis
- Barcode scanner module
- RJ phone cord (both short and long lengths included)
- Security screw (to permanently attach scanner module to holster)

Note: For the 15D1/15D2 touchcomputer, the software for the field-installable peripherals is already pre-installed.



Quick Installation Guide

Installing the Barcode Scanner for the 15D1/15D2 Touchcomputer

Caution:
Before attaching the barcode scanner, make sure that the touchcomputer is powered off.



www.elotouch.com



Revision A
P/N E428352

North America
Elo TouchSystem
301 Constitution Drive,
Menlo Park, CA 94025
www.elotouch.com

Elo Technical Support
Online self-help:
www.elotouch.com/go/websupport
Technical Support contacts in your region:
www.elotouch.com/go/contactsupport

Europe
Tel +32 (0)16 35 21 00
Fax +32 (0)16 35 21 01
elosales@elotouch.com

Asia-Pacific
Tel +81 (45) 478-2161
Fax +81 (45) 478-2180
www.tps.co.jp

Latin America
Tel 1-305-428-5210
Fax 1-305-717-4909
www.elotouch.com.ar

© 2009 Tyco Electronics.



Tyco Electronics

Our commitment. Your advantage.



Tyco Electronics

Our commitment. Your advantage.

1



▶▶▶ Turn off the power to the touchcomputer.

2



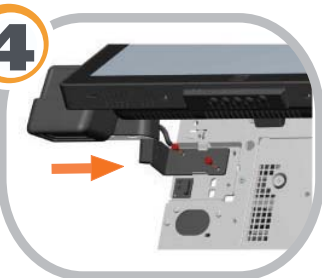
▶▶▶ Remove the side door, as shown.

3



▶▶▶ Remove the front door.

4



▶▶▶ Insert the barcode reader bracket and secure with screws.

5



▶▶▶ Connect the cable to the USB connector.

6



▶▶▶ Replace the front door.

7



▶▶▶ Replace the side door.

8



▶▶▶ Turn on the touchcomputer.