

Included Items:

- One Elo Fingerprint Reader
- Two mounting screws

Quick Installation Guide

Installing the Fingerprint Reader for the B-Series Touchcomputer

Caution:

The touch computer must be unplugged before any installation occurs.



www.elotouch.com



Revision A
P/N E047270

North America
Elo TouchSystem
301 Constitution Drive,
Menlo Park, CA 94025
www.elotouch.com

Elo Technical Support
Online self-help:
www.elotouch.com/go/websupport
Technical Support contacts in your region:
www.elotouch.com/go/contactsupport

Europe
Tel +32 (0)16 35 21 00
Fax +32 (0)16 35 21 01
elosales@elotouch.com

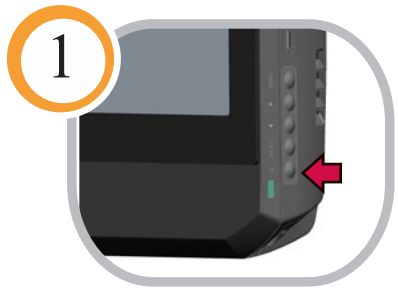
Asia-Pacific
Tel +81 (45) 478-2161
Fax +81 (45) 478-2180
www.tps.co.jp

Latin America
Tel 1-305-428-5210
Fax 1-305-717-4909
www.elotouch.com.ar



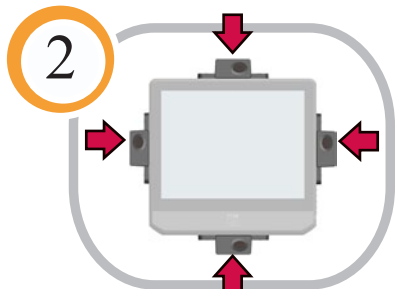
Tyco Electronics

Our commitment. Your advantage.



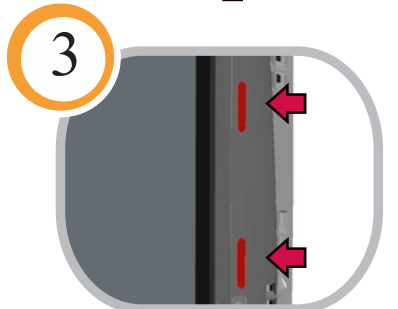
1

▶▶▶ Turn off the touch computer.



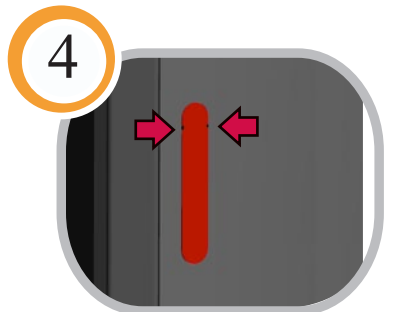
2

▶▶▶ Choose a location to attach the fingerprint reader.



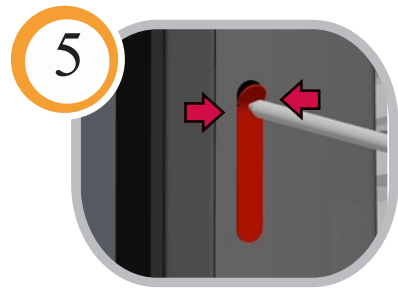
3

▶▶▶ Remove the two accessory covers over the chosen mounting location.



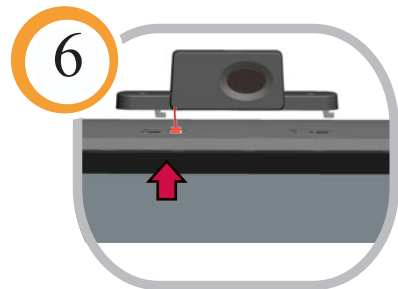
4

▶▶▶ To remove a cover, locate the two small cuts on the cover.



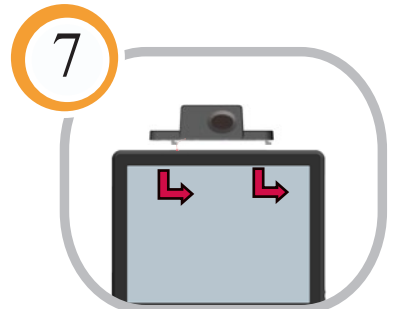
5

▶▶▶ Press a small screwdriver into the cover between the two notches. As the cover bends up, grasp the end and peel it away.



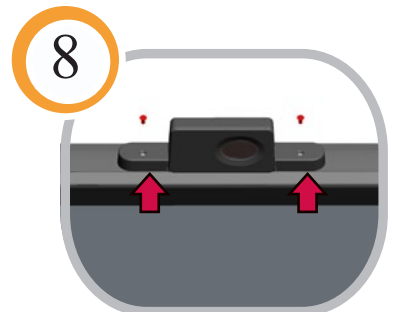
6

▶▶▶ Plug the cable into the connector on the touch computer.



7

▶▶▶ Insert the hooks on the device into the corresponding slots on the touch computer.



8

▶▶▶ Secure the device to the touch-computer using the included screws.