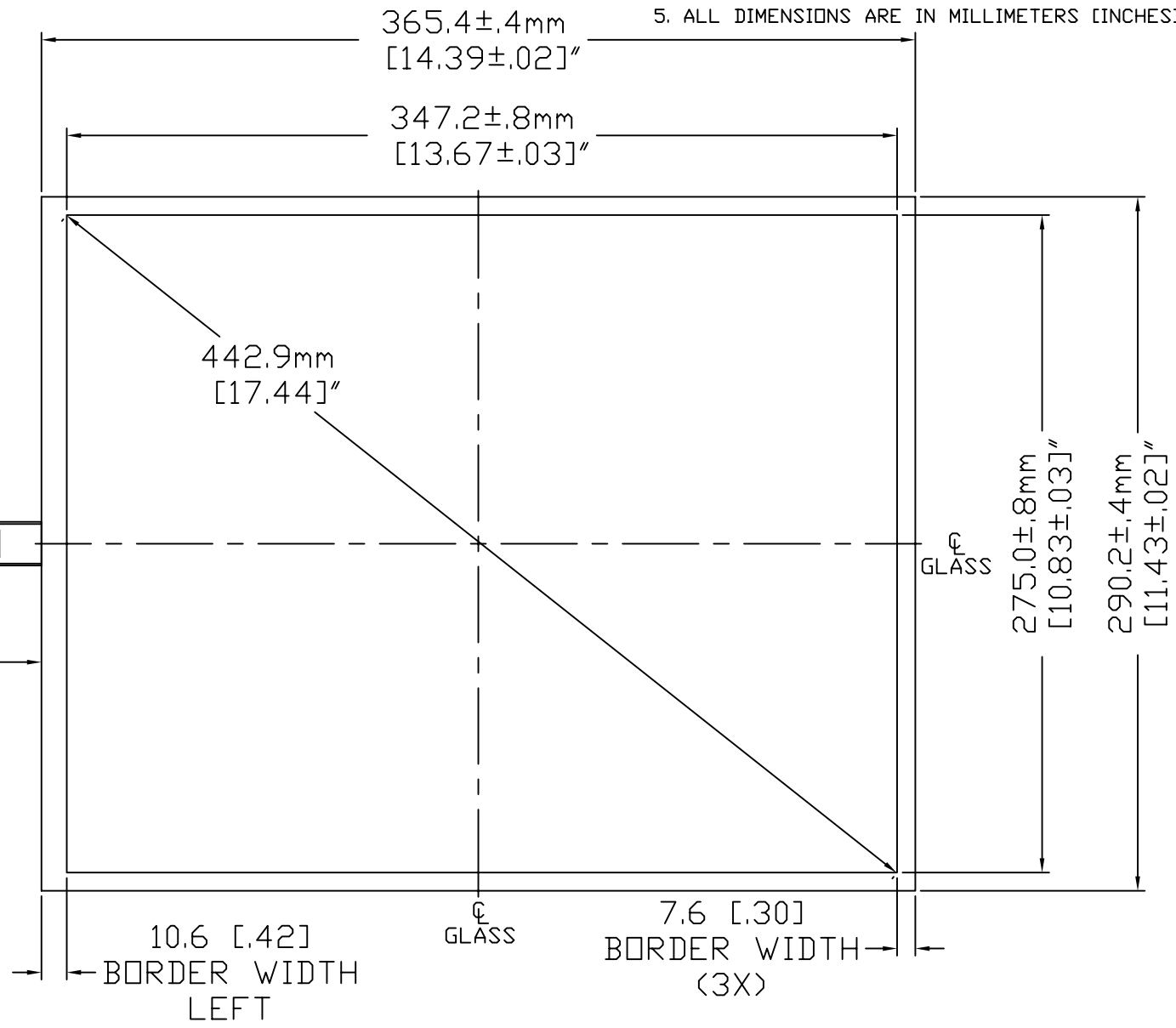
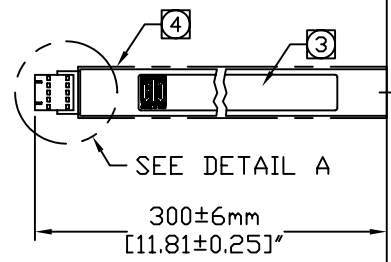
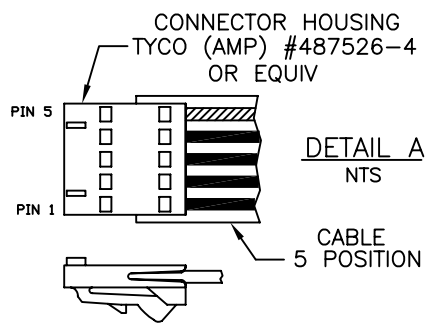


CONNECTOR PINOUT	
PIN NO.	DESIGNATION
5	UR
4	UL
3	SHIELD
2	LL
1	LR

SURFACE CAPACITIVE TOUCHSCREEN  
 SCN-SC-FLT17.0-002-004  
 ELO P/N: D32805-000

- NOTES:**
- GLASS THICKNESS: 3.2±0.3mm [0.125±0.012]"
  - FINISHED PART THICKNESS AT THE CABLE ATTACH AREA: 4.3mm [0.17]"
  - THE LABEL IS ATTACHED TO THE FRONT SIDE OF THE CABLE.
  - FLUOROPOLYMER TUBING FOR INCREASED ISOLATION.
  - ALL DIMENSIONS ARE IN MILLIMETERS [INCHES].



UNLESS OTHERWISE SPECIFIED:  
 DIMENSIONS ARE IN mm [IN]

