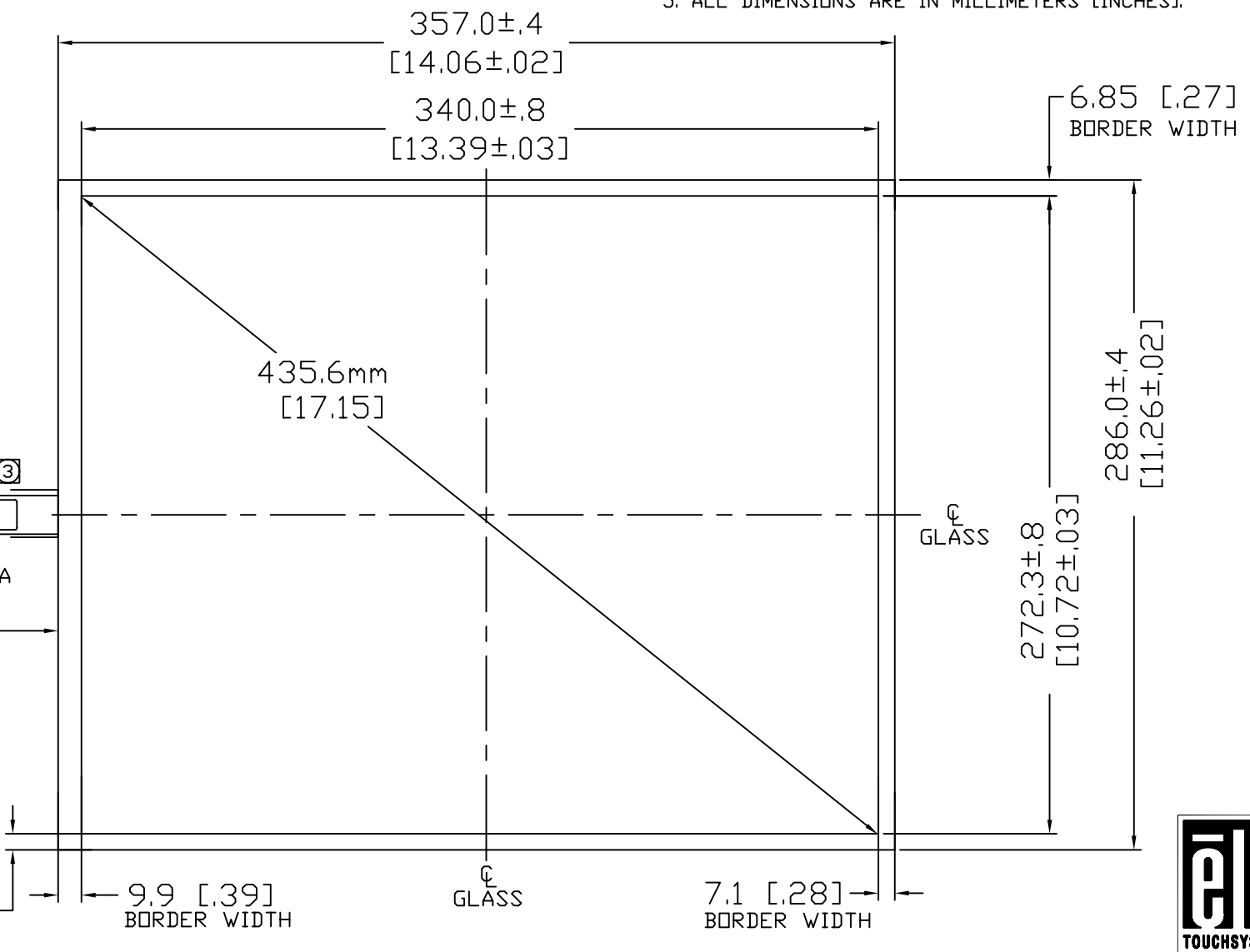
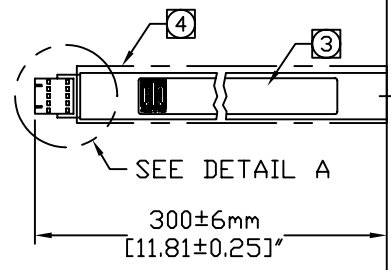
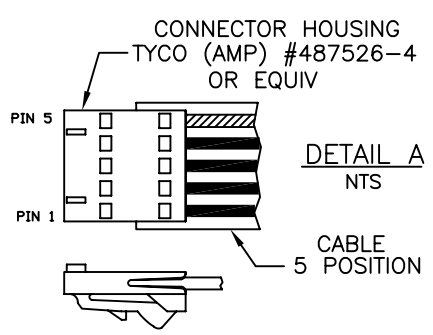


CONNECTOR PINOUT	
PIN NO.	DESIGNATION
5	UR
4	UL
3	SHIELD
2	LL
1	LR

SURFACE CAPACITIVE TOUCHSCREEN
 SCN-SC-FLT17.0-004-004
 ELO P/N: A46249-000

- NOTES:
1. GLASS THICKNESS: 3.2±0.3mm [0.125±0.012]"
 2. FINISHED PART THICKNESS AT THE CABLE ATTACH AREA: 4.3mm [0.17"]
 3. THE LABEL IS ATTACHED TO THE FRONT SIDE OF THE CABLE.
 4. FLUOROPOLYMER TUBING FOR INCREASED ISOLATION.
 5. ALL DIMENSIONS ARE IN MILLIMETERS [INCHES].



UNLESS OTHERWISE SPECIFIED:
 DIMENSIONS ARE IN mm [IN]

