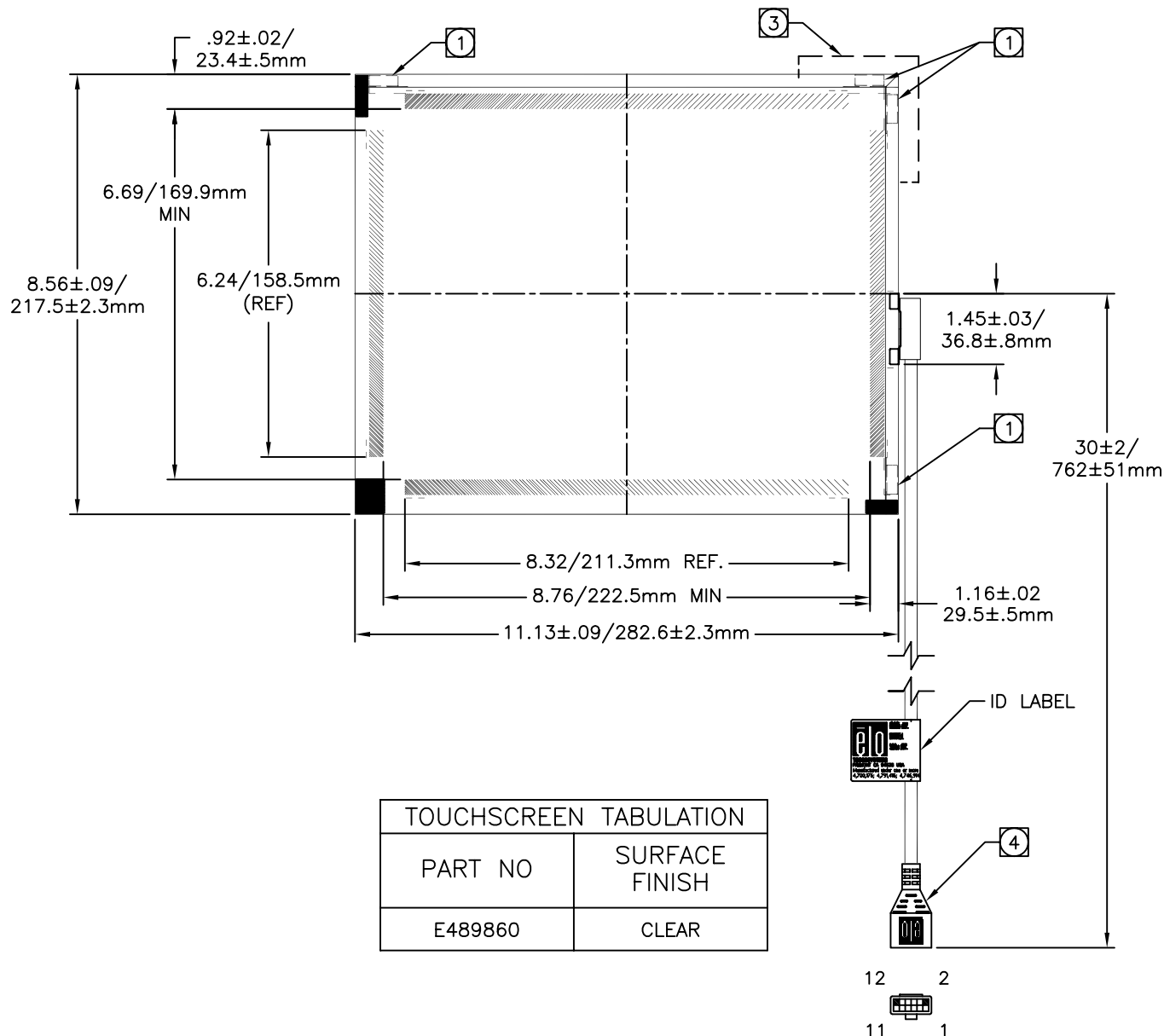


SecureTouch TOUCHSCREEN
SCN-ST-FLT10.4-006-000-R



NOTES:

1. TRANSDUCERS ARE LOCATED AT THE POSITIONS SHOWN. GLASS IS BEVELED UNDER THE TRANSDUCERS.
2. NO MATERIAL EXTENDS MORE THAN $.030 / .8 \text{ mm}$ BEYOND THE BACK SURFACE OF THE GLASS.
3. CABLE ROUTING ADDS A MAXIMUM OF $.10 / 2.5 \text{ mm}$ TO INDICATED SECTION OF SCREEN.
4. BERG 65043-031, 2x6 HOUSING WITH BERG 48239-000 RECEPTACLES, DIRECTLY MATES WITH ANY OF THE FOLLOWING:
 - INTELLITOUCH SERIAL CONTROL BOARD
 - 012226 CABLE (2x6 TO 8" DB9 BULKHEAD)
5. GLASS THICKNESS: $.47 / 12 \text{ mm}$ NOMINAL.
6. ALL DIMENSIONS ARE IN INCHES AND MILLIMETERS.
7. THE TOUCH ACTIVE AREA IS LESS THAN THE VIEWABLE AREA TO FACILITATE SEALING.
8. SURFACE QUALITY: THERE SHALL BE NO CIRCULAR DEFECTS LARGER THAN $.060"$ AND SCRATCHES LONGER THAN $1.50"$ AND WIDER THAN $.007"$.