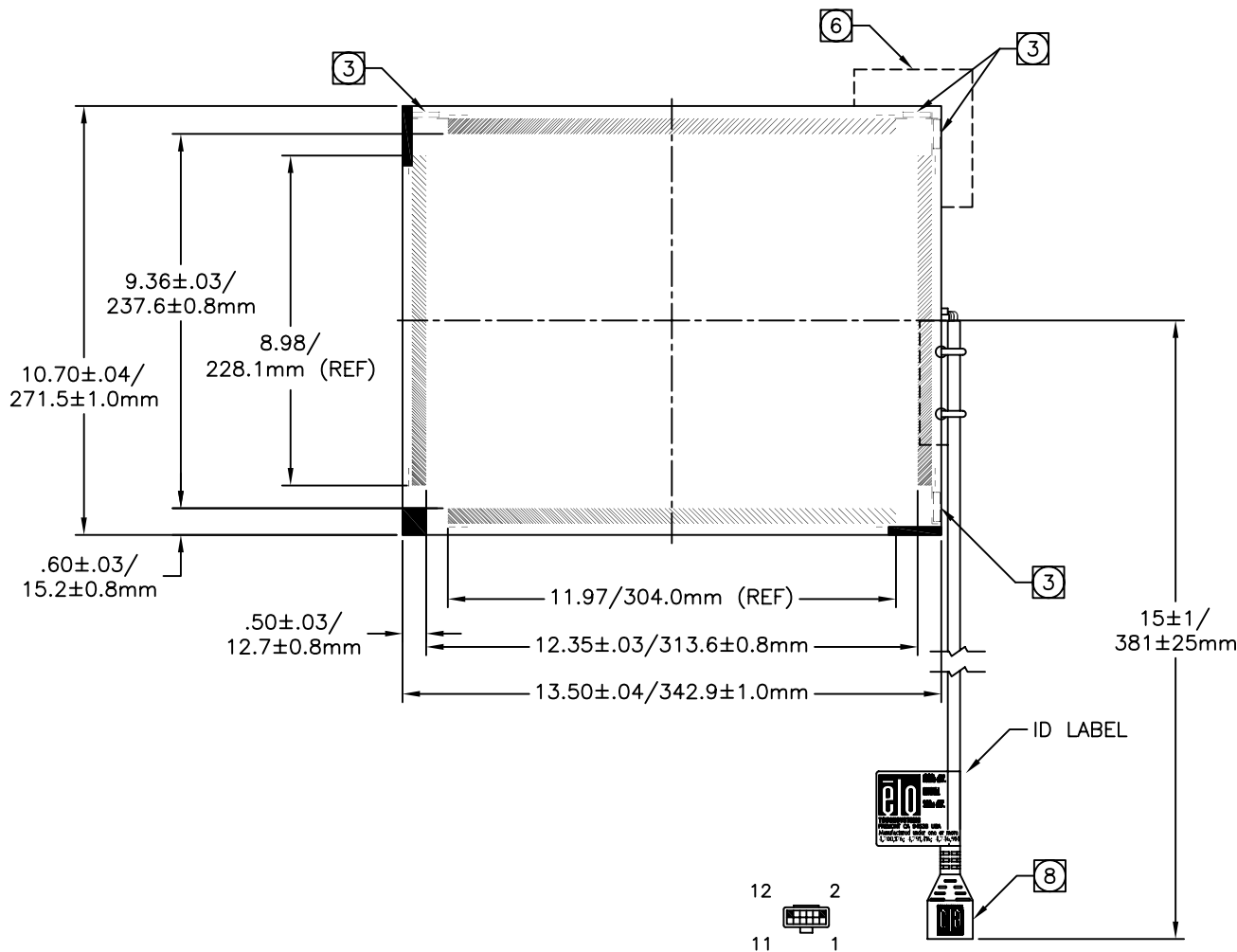


INTELLITOUCH® TOUCHSCREEN
SCN-ST-FLT15.0-008-00X-R



T/D HEIGHT
 $0.125 [3.2] \text{MAX.}$

NOTES:

- ALL DIMENSIONS ARE IN INCHES AND MILLIMETERS.
- GLASS THICKNESS: $0.22 \pm 0.012" [5.6 \pm 0.3 \text{mm}]$.
- TRANSDUCERS ARE LOCATED AT THE POSITIONS SHOWN.
- HEIGHT OF TRANSDUCERS ABOVE GLASS SURFACE = $0.125" [3.2 \text{mm}]$ MAXIMUM.
- WIRES TO BE ROUTED ON TOP SURFACE OF THE GLASS ALONG THE EDGE.
- CABLE ROUTING ADDS $0.10" / 2.5 \text{mm}$ MAX TO INDICATED SECTION.
- NO MATERIAL EXTENDS MORE THAN $.030 / .8 \text{mm}$ BEYOND THE BACK SURFACE OF THE GLASS.
- BERG 65043-031, 2x6 HOUSING WITH BERG 48239-000 RECEPTACLES, DIRECTLY MATES WITH ANY OF THE FOLLOWING:
 - INTELLITOUCH SERIAL CONTROL BOARD
 - 012226 CABLE (2x6 TO 8" DB9 BULKHEAD)
- THE TOUCH ACTIVE AREA IS LESS THAN THE VIEWABLE AREA TO FACILITATE SEALING.

CONNECTION CHART

PIN	SIGNAL	INSULATION COLOR	JACKET COLOR
1	GROUND	OVERALL SHIELD	
2	KEY		
3	Y RECEIVE (+)	BLU	BLK
4	Y TRANSMIT (+)	BLU	GRY
5	Y RECEIVE (-)	BLK	BLK
6	Y TRANSMIT (-)	YEL	GRY
7	GROUND	INNER SHIELD	
8	X TRANSMIT (-)	RED	RED
9	X RECEIVE (-)	RED	BLK
10	X TRANSMIT (+)	GRN	RED
11	X RECEIVE (+)	WHT	BLK
12	KEY		

TOUCHSCREEN TABULATION

PART NUMBER	SURFACE FINISH
E813274	CLEAR
E577008	ANTI GLARE (SINGLE SIDED)