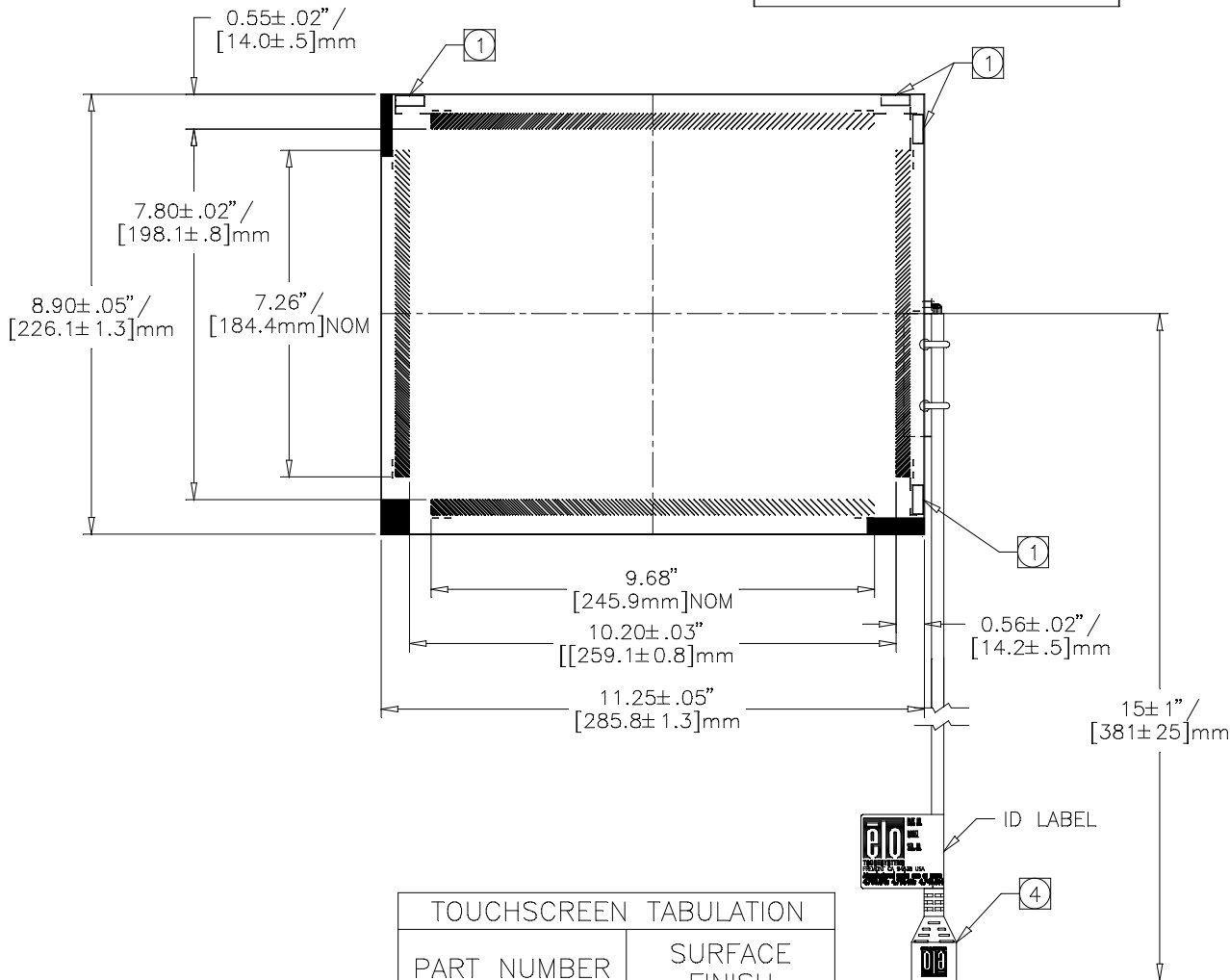
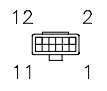


INTELLITOUCH® TOUCHSCREEN
SCN-ST-FLT12.1-009-00X



TOUCHSCREEN TABULATION	
PART NUMBER	SURFACE FINISH
657793-000	CLEAR
D54983-000	ANTI GLARE (ONE SIDED)



NOTES:

- ① TRANSDUCERS ARE LOCATED AT THE POSITIONS SHOWN. HEIGHT OF TRANSDUCER ABOVE GLASS IS 0.12"/3.0mm MAX.
2. NO MATERIAL EXTENDS MORE THAN 0.03"/0.8mm BEYOND THE BACK SURFACE OF THE GLASS.
3. WIRES ARE ROUTED ALONG THE OUTSIDE EDGE OF THE TOP SURFACE OF THE GLASS.
- ④ BERG 65043-031, 2x6 HOUSING WITH BERG 48239-000 RECEPTACLES, DIRECTLY MATES WITH ANY OF THE FOLLOWING:
-INTELLITOUCH SERIAL CONTROL BOARD
-012226 CABLE (2x6 TO 8" DB9 BULKHEAD)
5. GLASS THICKNESS: 0.23"/6.0mm NOMINAL.
6. ALL DIMENSIONS ARE IN INCHES AND MILLIMETERS.
7. THE TOUCH ACTIVE AREA IS LESS THAN THE VIEWABLE AREA TO FACILITATE SEALING.

CONNECTION CHART

PIN	SIGNAL	INSULATION COLOR	JACKET COLOR
1	GROUND	OVERALL SHIELD	
2	KEY		
3	Y RECEIVE (+)	BLU	BLK
4	Y TRANSMIT (+)	BLU	GRY
5	Y RECEIVE (-)	BLK	BLK
6	Y TRANSMIT (-)	YEL	GRY
7	GROUND	INNER SHIELD	
8	X TRANSMIT (-)	RED	RED
9	X RECEIVE (-)	RED	BLK
10	X TRANSMIT (+)	GRN	RED
11	X RECEIVE (+)	WHT	BLK
12	KEY		