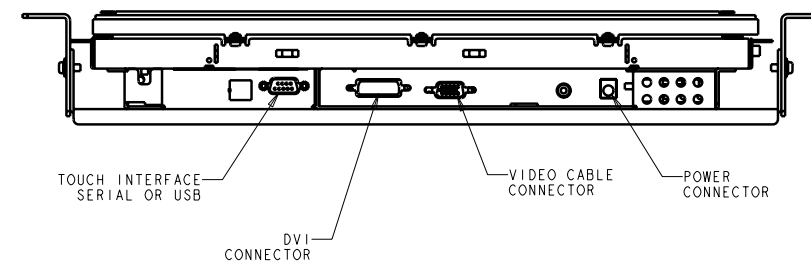
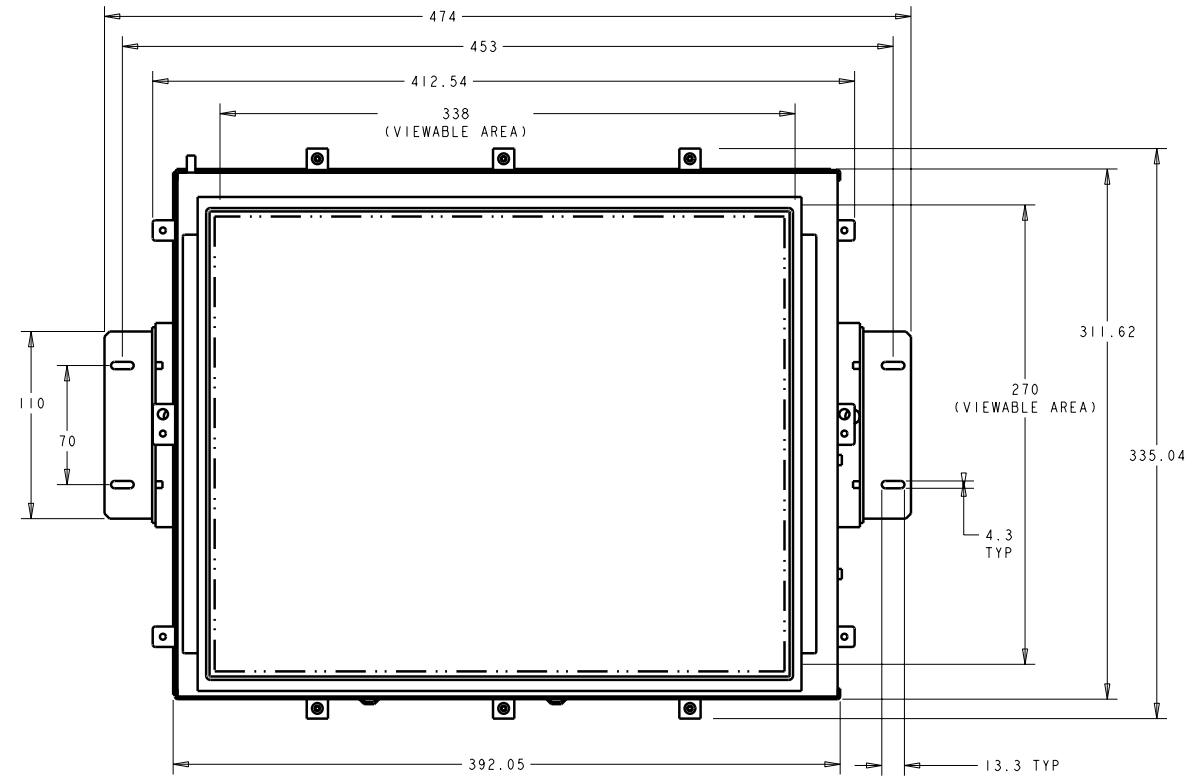
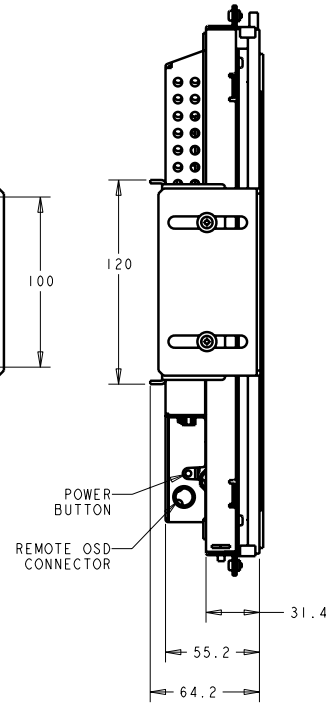
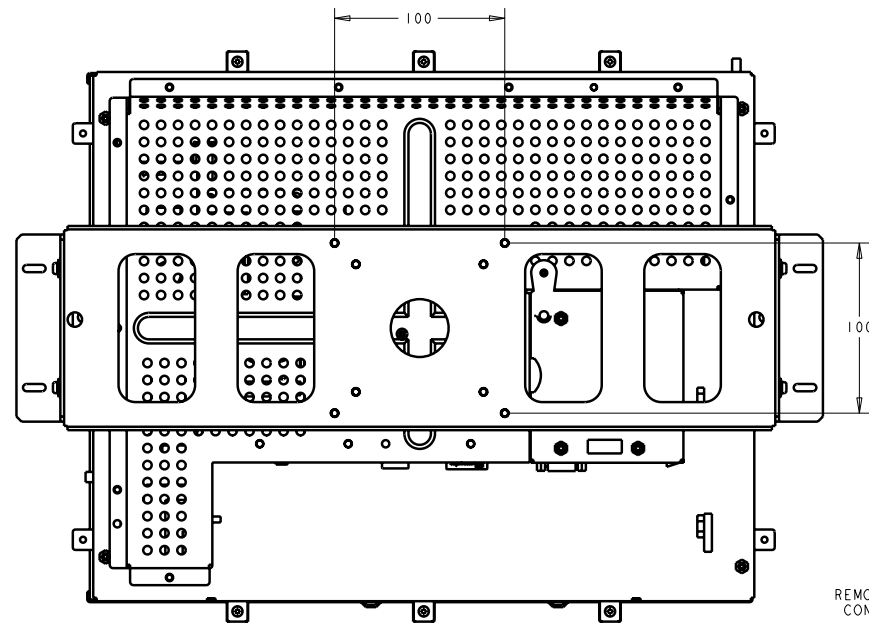


REAR MOUNT
ET1747L PROJECTED CAPACITIVE
THROUGH GLASS



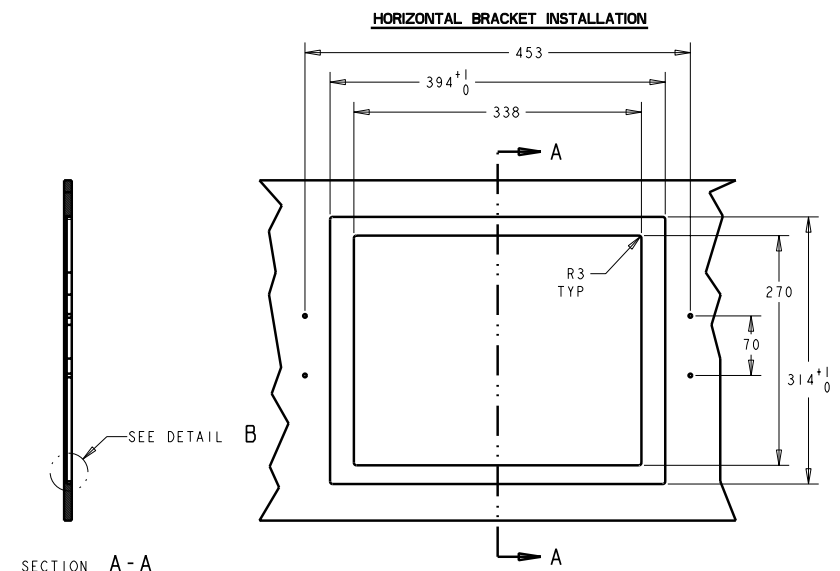
PART NUMBER	PART DESCRIPTION
D80541-000	ET1747L-2SWF-1

DIMENSIONS ARE IN MILLIMETERS/INCHES

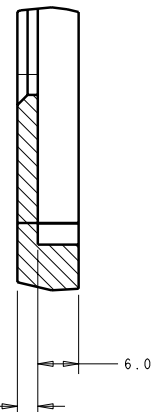
SHEET 1 OF 3



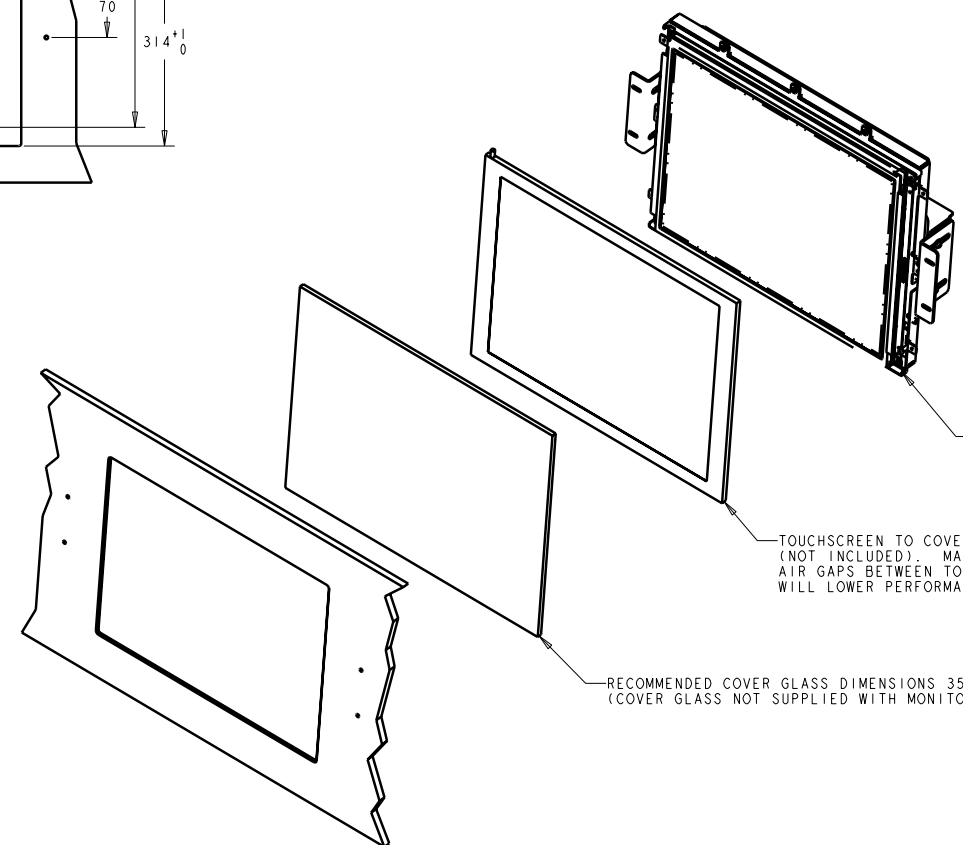
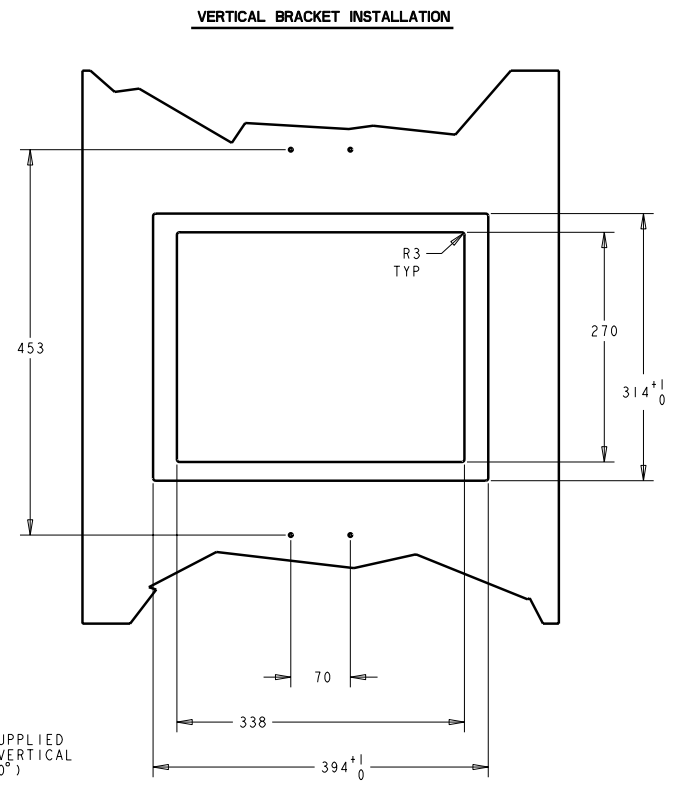
PLATE CUT OUT, ELO BRACKET INSTALLATION



SECTION A-A



DETAIL B
SCALE 2:1
 PROFILE DIMENSIONS ARE IDENTICAL FOR HORIZONTAL OR VERTICAL BRACKET INSTALLATIONS.



MONITOR SHOWN WITH SUPPLIED HORIZONTAL BRACKET (VERTICAL BRACKET IS ROTATED 90°)

TOUCHSCREEN TO COVER GLASS SEALING FOAM (NOT INCLUDED). MAX THICKNESS 0.5mm
 AIR GAPS BETWEEN TOUCHSCREEN AND COVER GLASS WILL LOWER PERFORMANCE OF TOUCHSCREEN

RECOMMENDED COVER GLASS DIMENSIONS 356 x 264 x 6 (COVER GLASS NOT SUPPLIED WITH MONITOR)

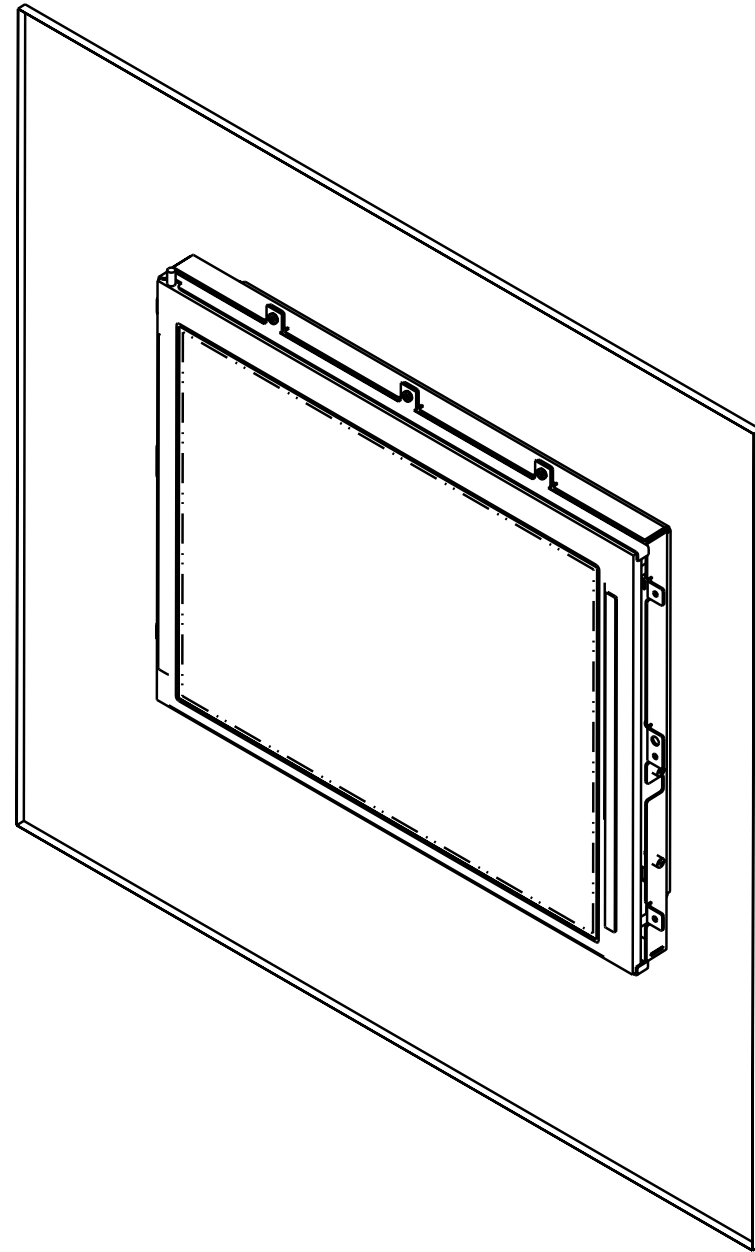
1. THIS MONITOR IS DESIGNED TO BE MOUNTED BEHIND A SEPARATE PIECE OF CUSTOMER SUPPLIED GLASS OR PLASTIC
2. IF A METAL BEZEL IS USED AROUND THIS MONITOR THE BEZEL MUST:
 - BE GROUNDED
 - BE SPACED MINIMUM 2MM FROM THE FRONT SURFACE OF THE TOUCH SCREEN
 - HAVE AN APERTURE THAT IS 10MM LARGER ON ALL SIDES THAN THE ACTIVE AREA OF THE TOUCH SCREEN
3. ALWAYS CONSULT USER MANUAL OR ELO TECHNICAL SUPPORT BEFORE DESIGNING INTEGRATED SOLUTIONS
4. MATERIAL:
 - WOOD: Ø4.5 HOLES THRU FOR M4 SCREWS W/ NUTS, OR NO THRU HOLES, SCREWS FOR WOOD Ø4
 - METAL: CONCEALED HEAD THREADED STUDS M4 W/ NUTS
5. 3D FILES AVAILABLE

DIMENSIONS ARE IN MILLIMETERS/INCHES

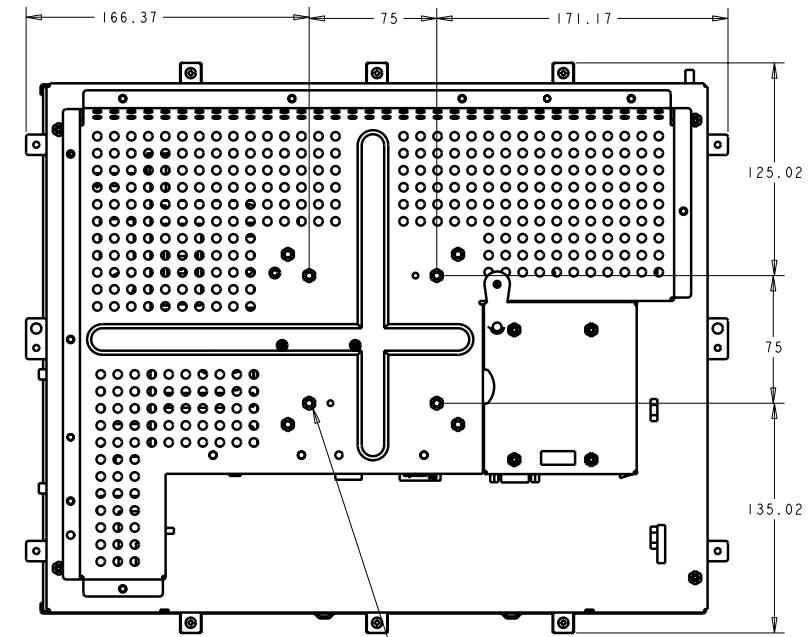
SHEET 2 OF 3

MS500557
 DATE: 01/21/05
 REV: B

NO BRACKET INSTALLATION



CUSTOMER SUPPLIED COVER GLASS
(I.E. STORE FRONT WINDOW)



M4 x 75mm VESA PATTERN

1. THIS MONITOR IS DESIGNED TO BE MOUNTED BEHIND A SEPARATE PIECE OF CUSTOMER SUPPLIED GLASS OR PLASTIC
2. IF A METAL BEZEL IS USED AROUND THIS MONITOR THE BEZEL MUST:
 - BE GROUNDED
 - BE SPACED MINIMUM 2MM FROM THE FRONT SURFACE OF THE TOUCH SCREEN
 - HAVE AN APERTURE THAT IS 10MM LARGER ON ALL SIDES THAN THE ACTIVE AREA OF THE TOUCH SCREEN
3. ALWAYS CONSULT USER MANUAL OR ELO TECHNICAL SUPPORT BEFORE DESIGNING INTEGRATED SOLUTIONS
4. MATERIAL:
 - WOOD: Ø 4.5 HOLES THRU FOR M4 SCREWS W/ NUTS,
OR NO THRU HOLES, SCREWS FOR WOOD Ø4
 - METAL: CONCEALED HEAD THREADED STUDS M4 W/ NUTS
5. 3D FILES AVAILABLE

DIMENSIONS ARE IN MILLIMETERS/INCHES

SHEET 3 OF 3

