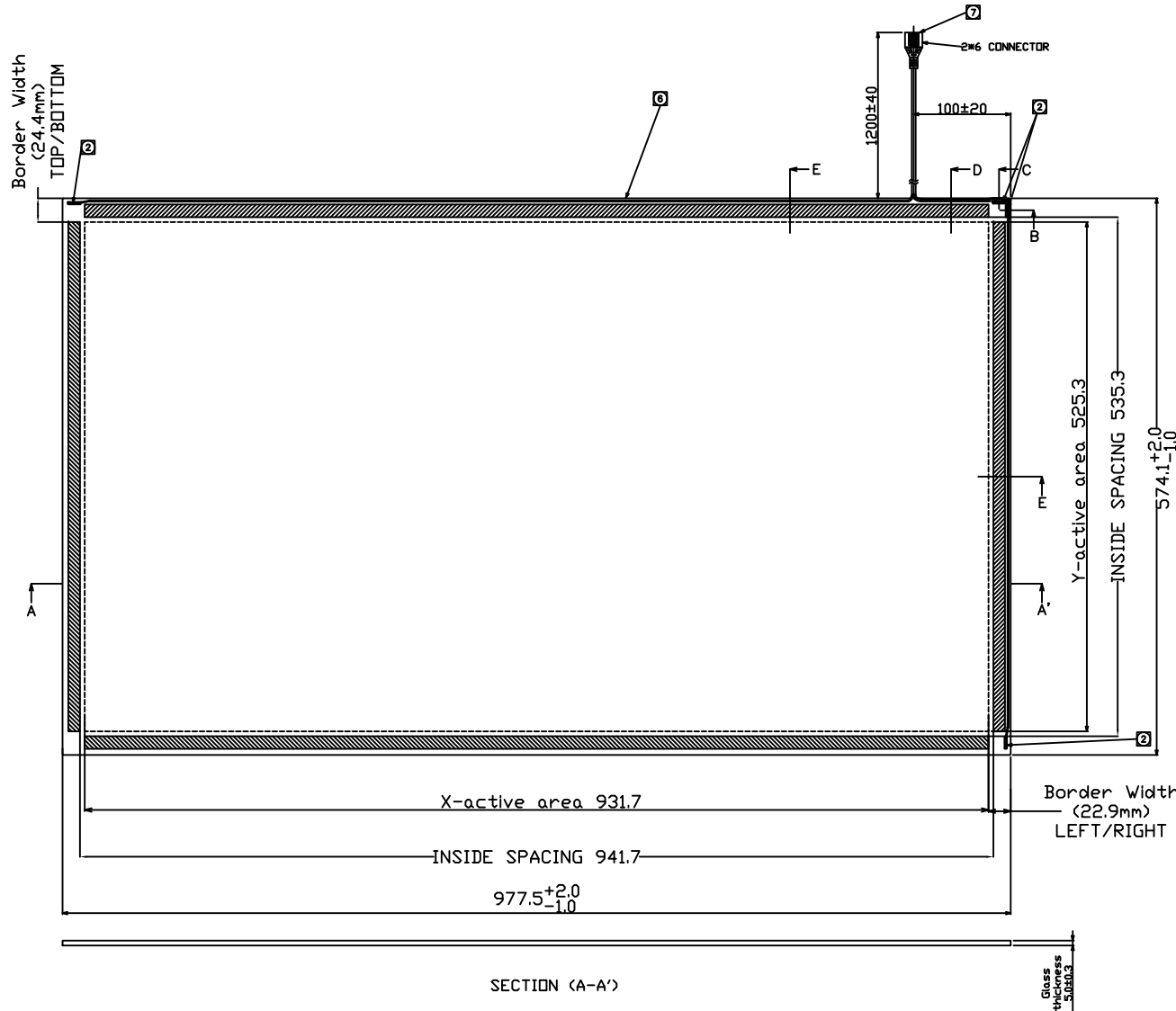


THIS DRAWING IS A CONTROLLED DOCUMENT. PART NO. MS600764

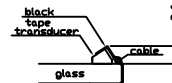


NOTES:

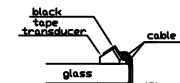
1. ALL DIMENSIONS ARE IN MILLIMETERS.
2. TRANSDUCERS ARE LOCATED AT THE POSITIONS SHOWN. HEIGHT OF TRANSDUCERS ABOVE GLASS SURFACE: 3.6mm MAX.
3. LAMINATED GLASS THICKNESS: 5.0±0.3mm.
4. NO MATERIAL EXTENDS MORE THAN 0.8mm BEYOND THE BACK SURFACE OF THE GLASS.
5. CABLE IS ROUTED ON THE FRONT SURFACE (ALONG THE EDGE) OF THE GLASS.
6. BLACK TAPES APPLIED AROUND THE GLASS EDGES.
7. CABLE DIRECTLY MATES WITH INTELLITOUCH CONTROLLER PART NUMBER D68054-00 (CTR-270100-IT-RSU-00R).

1	2	3	4	5	6	7	8	9	10	11	12
2	4	6	8	10	12						

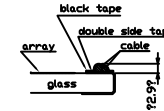
Pin No.	SIGNAL
1	GND(Shield)
2	NC
3	Y-receive
4	Y-transmit
5	Y-receive
6	Y-transmit
7	GND(Shield)
8	X-transmit
9	X-receive
10	X-transmit
11	X-receive
12	NC



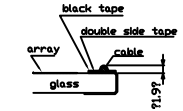
SECTION B



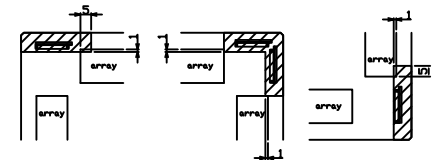
SECTION C



SECTION D



SECTION E



3.6?? CONVEX AREA (hatching area)

THIS INFORMATION IS CONFIDENTIAL AND PROPRIETARY TO TYCO ELECTRONICS CORPORATION AND ITS WORKING SUBSIDIARIES AND ELECTRONICS PRODUCTS. IT IS NOT TO BE DISCLOSED TO ANY OTHER PERSON OR ENTITY WITHOUT THE WRITTEN AUTHORIZATION FROM TYCO ELECTRONICS CORPORATION, HARRISBURG, PENNSYLVANIA, USA.

LOC 08
DIST 08

P	LTR	REVISION RECORD	DATE	DM	APD
A		INITIAL RELEASE PER ECO 09-006347	03/11/09	LA	

DIMENSIONS: mm		TOLERANCES UNLESS OTHERWISE SPECIFIED:	
0 PLC	± 1	0.15	± 0.15
0.15 PLC	± 0.15	0.3	± 0.3
0.3 PLC	± 0.3	0.6	± 0.6
0.6 PLC	± 0.6	1.2	± 1.2

DM	TANAKA	03/03/09	TECHNOLOGY	INTELLITOUCH	SURFACE TREATMENT	CLEAR
APD	LEO A	03/03/09	Tyco Electronics Corporation Harrisburg, PA 17105-3608			
MKTG DWG. SCN-IT-FLT42.0-W01-J06-W-R						
SCALE	1:1	SIZE	A2	DRAWING NO.	MS600764	SHEET 1 of 1