

THIS INFORMATION IS CONFIDENTIAL AND PROPRIETARY TO TYCO ELECTRONICS CORPORATION AND ITS WORLDWIDE SUBSIDIARIES AND AFFILIATES. IT MAY NOT BE DISCLOSED TO ANYONE, OTHER THAN TYCO ELECTRONICS PERSONNEL, WITHOUT WRITTEN AUTHORIZATION FROM TYCO ELECTRONICS CORPORATION, HARRISBURG, PENNSYLVANIA USA.

LOC 08
DIST 08
REV 3307-7 REV 31/06/00 8

LOC 08
DIST 08
REV 3307-7 REV 31/06/00 8

LOC 08
DIST 08
REV 3307-7 REV 31/06/00 8

LOC 08
DIST 08
REV 3307-7 REV 31/06/00 8

LOC 08
DIST 08
REV 3307-7 REV 31/06/00 8

LOC 08
DIST 08
REV 3307-7 REV 31/06/00 8

LOC 08
DIST 08
REV 3307-7 REV 31/06/00 8

LOC 08
DIST 08
REV 3307-7 REV 31/06/00 8

LOC 08
DIST 08
REV 3307-7 REV 31/06/00 8

LOC 08
DIST 08
REV 3307-7 REV 31/06/00 8

LOC 08
DIST 08
REV 3307-7 REV 31/06/00 8

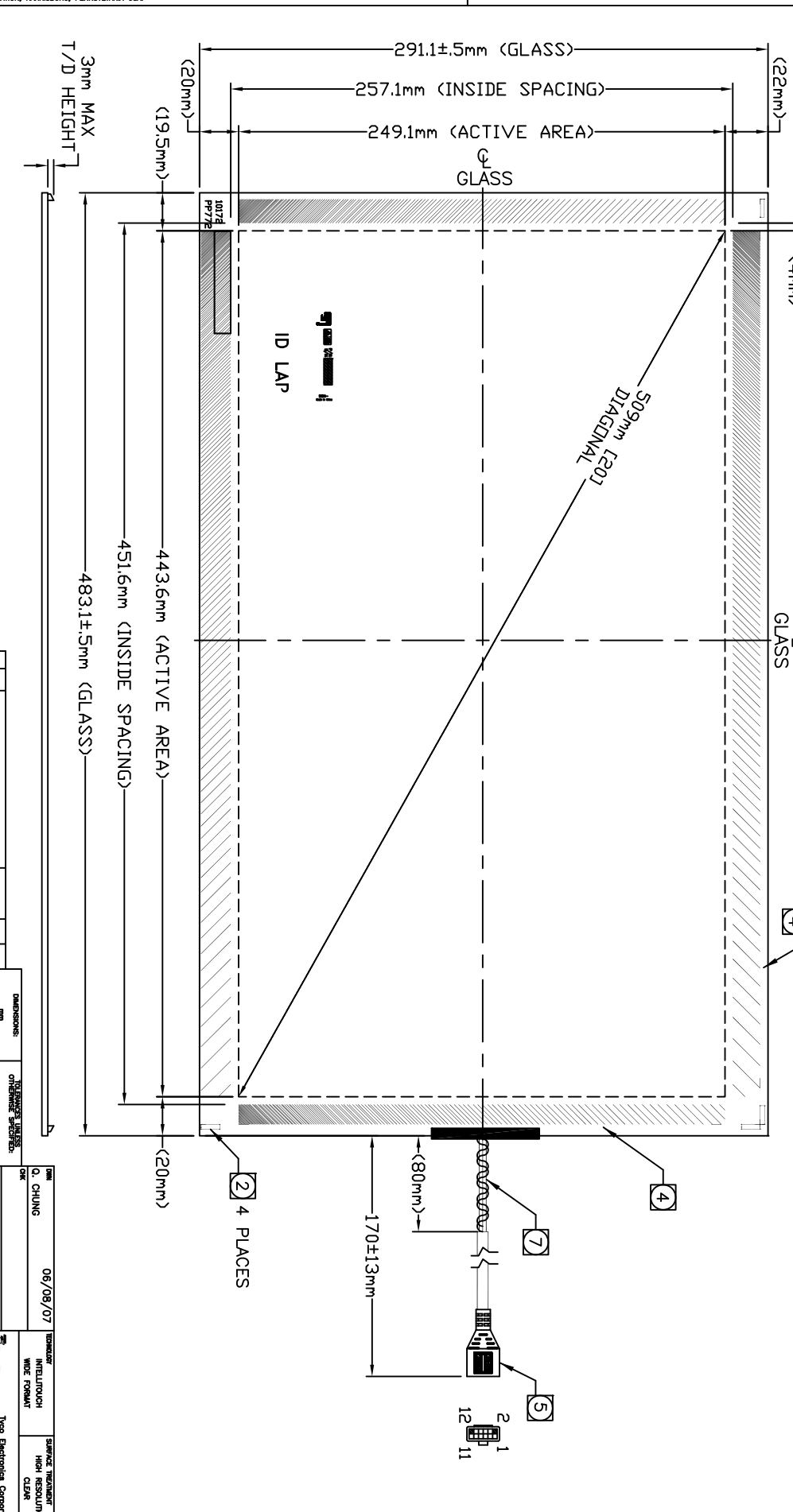
LOC 08
DIST 08
REV 3307-7 REV 31/06/00 8

LOC 08
DIST 08
REV 3307-7 REV 31/06/00 8

LOC 08
DIST 08
REV 3307-7 REV 31/06/00 8

LOC 08
DIST 08
REV 3307-7 REV 31/06/00 8

LOC 08
DIST 08
REV 3307-7 REV 31/06/00 8



- NOTES:**
- GLASS THICKNESS: 3±.3mm.
 - TRANSDUCERS LOCATED AT POSITIONS SHOWN. THE HEIGHT OF TRANSDUCER ABOVE GLASS TO BE 3mm MAX.
 - NO MATERIAL EXTENDS MORE THAN .8mm BEYOND THE BACK SURFACE OF GLASS.
 - CABLE IS ROUTED ALONG THE TOP EDGE OF THE GLASS. CABLE ATTACHED TO GLASS USING 2-INCH WIDE BLACK TAPE.
 - HOUSING TYPE: BERG 65043-031, 2X6. RECEPACLE TYPE: BERG 48239-000. CABLE MATES WITH ANY OF THE FOLLOWING:
> INTELLITOUCH SERIAL CONTROL BOARD
> 012226 CABLE (2X6 TO 8-INCH DB9 BULKHEAD).
 - TOUCH ACTIVE AREA IS LESS THAN THE VIEWABLE AREA TO FACILITATE SEALING.
 - TOTAL CABLE LENGTH: 170mm LONG. CABLE IS JACKET STRIPPED FOR EASE OF INTEGRATION.

PIN	SIGNAL	CONNECTION CHART	INSULATION COLOR/JACKET COLOR
1	GROUND	OVERALL SHIELD	BLK
2	KEY		BLK
3	Y RECEIVE (+)	BLU	GRY
4	Y TRANSMIT (+)	BLU	BLK
5	Y RECEIVE (-)	BLK	GRY
6	Y TRANSMIT (-)	YEL	GRY
7	GROUND	INNER SHIELD	GRY
8	X TRANSMIT (+)	RED	RED
9	X RECEIVE (-)	RED	BLK
10	X TRANSMIT (-)	GRN	RED
11	X RECEIVE (+)	WHT	BLK
12	KEY		BLK

DATE	06/08/07	DESIGNED BY	Q. CHUNG
SCALE	1:1	MARKETING NO.	MS600531
REV	1	DATE	03/23/09
REV	2	DATE	11/19/07
REV	3	DATE	09/23/09
REV	4	DATE	11/19/07
REV	5	DATE	11/19/07