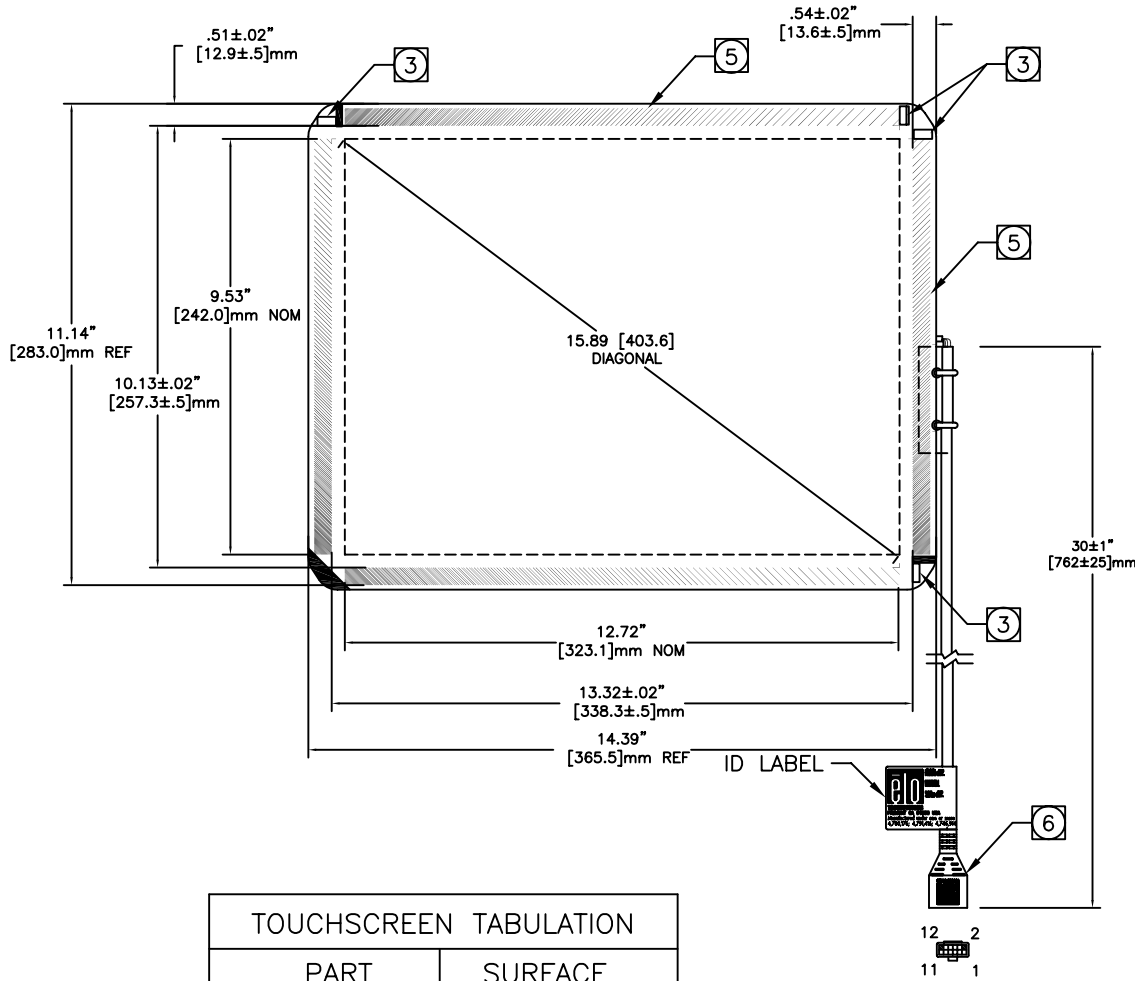


INTELLITOUCH® TOUCHSCREEN
SCN-IT-FCR17.0-001-00X-R



TOUCHSCREEN TABULATION	
PART NUMBER	SURFACE FINISH
E849604	CLEAR
E694108	HIGH RESOLUTION ANTI-GLARE

NOTES:

- ALL DIMENSIONS ARE IN INCHES AND MILLIMETERS. DIMENSIONS SHOWN ARE PROJECTED DISTANCES.
- GLASS THICKNESS: $3.0 \pm 0.3 \text{mm}$ [0.12 ± 0.012 "].
- TRANSDUCERS ARE LOCATED AT THE POSITIONS SHOWN. HEIGHT OF TRANSDUCERS ABOVE GLASS: $3.8 \text{mm}/.150 \text{ MAX.}$
- NO MATERIAL EXTENDS MORE THAN $0.8 \text{mm}/.03$ BEYOND THE BACK SURFACE OF THE GLASS.
- CABLE IS ROUTED ON TOP SURFACE (ALONG THE EDGE) OF THE GLASS.
- BERG 65043-031, 2x6 HOUSING WITH BERG 48239-000 RECEPTACLES, DIRECTLY MATES WITH ANY OF THE FOLLOWING:
-INTELLITOUCH SERIAL CONTROL BOARD
-012226 CABLE (2x6 TO 8" DB9 BULKHEAD)
- THE TOUCH ACTIVE AREA IS LESS THAN THE VIEWABLE AREA TO FACILITATE SEALING.

CONNECTION CHART			
PIN	SIGNAL	INSULATION COLOR	JACKET COLOR
1	GROUND	OVERALL SHIELD	
2	KEY		
3	Y RECEIVE (+)	BLU	BLK
4	Y TRANSMIT (+)	BLU	GRY
5	Y RECEIVE (-)	BLK	BLK
6	Y TRANSMIT (-)	YEL	GRY
7	GROUND	INNER SHIELD	
8	X TRANSMIT (-)	RED	RED
9	X RECEIVE (-)	RED	BLK
10	X TRANSMIT (+)	GRN	RED
11	X RECEIVE (+)	WHT	BLK



MS600116
DATE: 11/17/05
REV. A