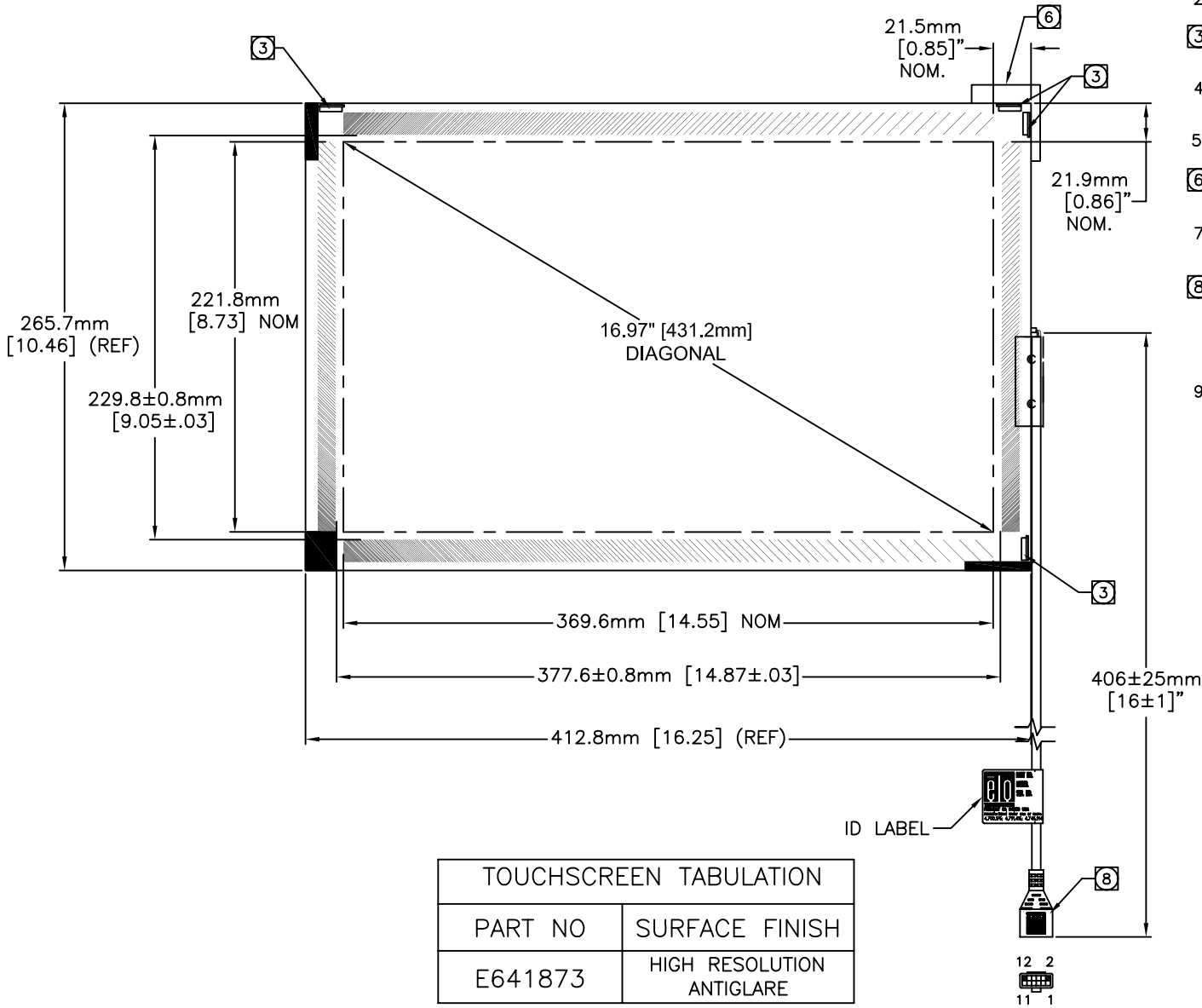


INTELLITOUCH[®] TOUCHSCREEN
 SCN-IT-FLT17.5-001-004-R



TOUCHSCREEN TABULATION	
PART NO	SURFACE FINISH
E641873	HIGH RESOLUTION ANTIGLARE

NOTES:

- ALL DIMENSIONS ARE IN MILLIMETERS AND INCHES.
- GLASS THICKNESS: 3.0±0.3mm[0.12±0.012"].
- TRANSDUCERS ARE LOCATED AT THE POSITIONS SHOWN. HEIGHT OF TRANSDUCERS ABOVE GLASS: 3.8mm [.15] MAX.
- NO MATERIAL EXTENDS MORE THAN 0.8mm [.030] BEYOND THE BACK SURFACE OF THE GLASS.
- CABLE IS ROUTED ALONG THE TOP EDGE OF THE GLASS.
- CABLE ROUTING ADDS 2.5mm [.10] MAX TO INDICATED SECTION OF THE SCREEN.
- ARRAY PATTERNS ARE CENTERED ON THE GLASS WITH TOLERANCE OF ±0.8mm [.03].
- BERG 65043-031, 2x6 HOUSING WITH BERG 48239-000 RECEPTACLES, DIRECTLY MATES WITH ANY OF THE FOLLOWING:
 -INTELLITOUCH SERIAL CONTROL BOARD
 -012226 CABLE (2x6 TO 8" DB9 BULKHEAD)
- THE TOUCH ACTIVE AREA IS LESS THAN THE VIEWABLE AREA TO FACILITATE SEALING.

CONNECTION CHART		
PIN	SIGNAL	CABLE COLOR
1	GROUND	GROUND WIRES
2	KEY	N/C
3	Y RECIEVE +	ORANGE
4	X RECIEVE +	WHITE
5	Y RECEIVE -	BLUE
6	X RECIEVE -	GREEN
7	GROUND	GROUND WIRES
8	X TRANSMIT -	BLACK
9	Y TRANSMIT -	YELLOW
10	X TRANSMIT +	RED
11	Y TRANSMIT +	BROWN
12	KEY	N/C