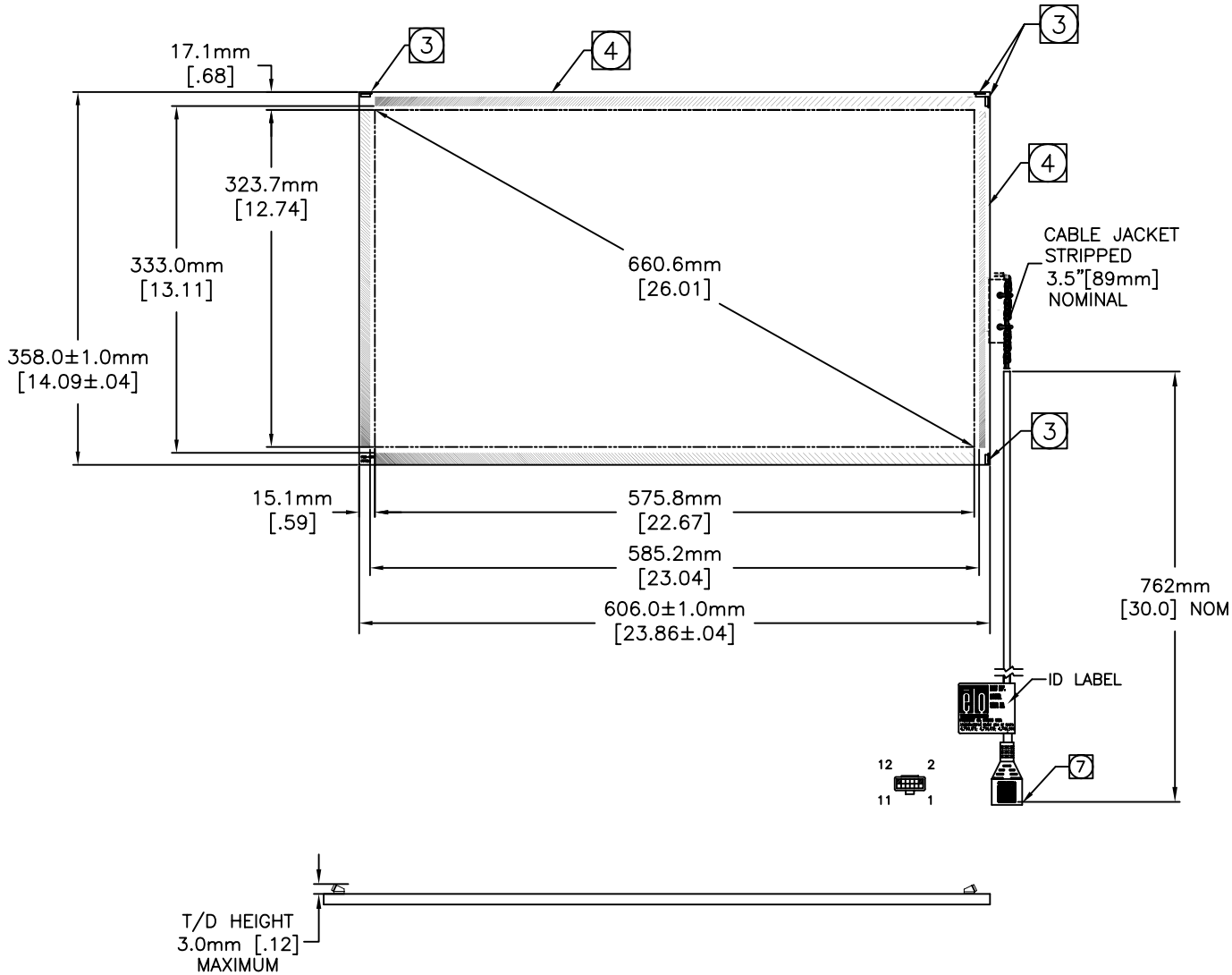


INTELLITOUCH® TOUCHSCREEN
SCN-IT-FLT26.0-001-006



NOTES:

1. ALL DIMENSIONS ARE IN MILLIMETERS [INCHES].
2. GLASS THICKNESS: 5.00±.20mm/ [.200±.008].
3. TRANSDUCERS ARE LOCATED AT THE POSITIONS SHOWN. HEIGHT OF TRANSDUCERS ABOVE GLASS SURFACE = 3.0mm [.12] MAX.
4. CABLE IS ROUTED ON THE FRONT EDGE OF THE GLASS.
5. CABLE JACKET IS STRIPPED 89mm [3.5] FOR EASE DURING INTEGRATION PROCESS.
6. BLACK TAPES ARE APPLIED ON THE BACK SURFACE OF THE GLASS OPPOSITE THE ARRAY PATTERNS.
7. BERG 65043-031, 2x6 HOUSING WITH BERG 48239-000 RECEPTACLES, DIRECTLY MATES WITH ANY OF THE FOLLOWING:
-INTELLITOUCH SERIAL CONTROL BOARD
-012226 CABLE (2x6 TO 8 INCH DB9 BULKHEAD)
8. THE TOUCH ACTIVE AREA IS LESS THAN THE VIEWABLE AREA TO FACILITATE SEALING.
9. SURFACE QUALITY SPECIFICATION: ES500051. ELLIPTICAL BUBBLES TO BE CLASSIFIED AS LINEAR DEFECTS. MAX. LENGTH = 12.5mm [.50] AND MAX WIDTH = .25mm [.010].

CONNECTION CHART

PIN	SIGNAL	INSULATION COLOR	JACKET COLOR
1	GROUND	OVERALL SHIELD	
2	KEY		
3	Y RECEIVE (+)	BLU	BLK
4	Y TRANSMIT (+)	BLU	GRY
5	Y RECEIVE (-)	BLK	BLK
6	Y TRANSMIT (-)	YEL	GRY
7	GROUND	INNER SHIELD	
8	X TRANSMIT (-)	RED	RED
9	X RECEIVE (-)	RED	BLK
10	X TRANSMIT (+)	GRN	RED
11	X RECEIVE (+)	WHT	BLK
12	KEY		

TOUCHSCREEN
TABULATION

PART NO	SURFACE FINISH
E206368	CLEAR



MS500596
DATE:07/06/05
REV. A