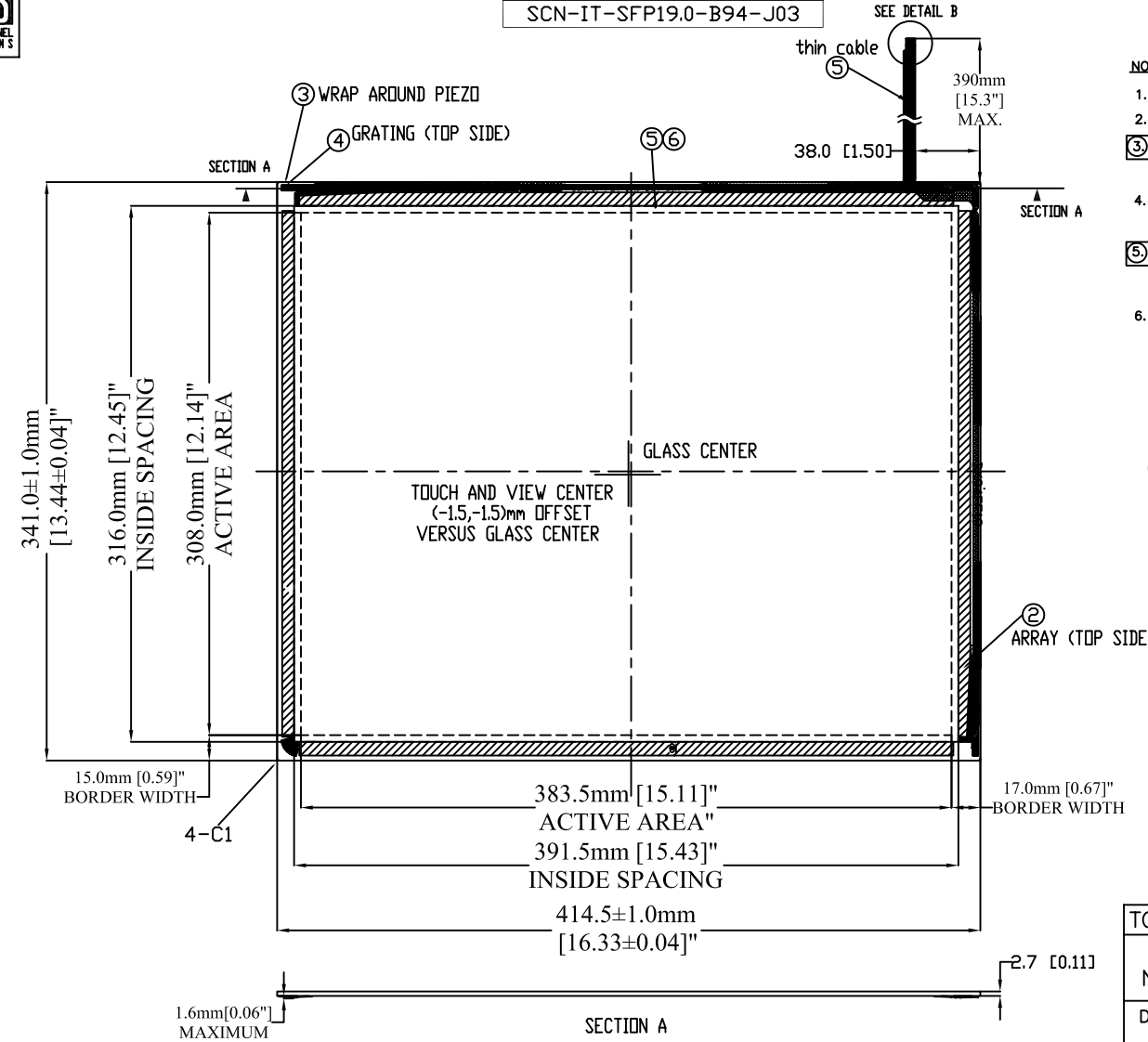




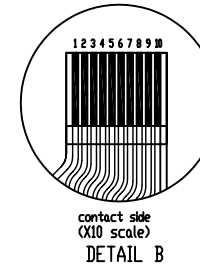
INTELLITOUCH® TOUCHSCREEN  
SCN-IT-SFP19.0-B94-J03

| REV. | DESCRIPTION                 | DATE     | APPROVED |
|------|-----------------------------|----------|----------|
| C    | REVISED PER ECD 4701        | 02/03/05 | LED      |
| D    | REMOVED LABELS PER ECD 4727 | 02/10/05 | LED      |



NOTES:

- ALL DIMENSIONS ARE IN MILLIMETERS AND INCHES.
- GLASS THICKNESS: 2.7mm[0.106"] NOMINAL.
- WRAP-AROUND PIEZOS ARE LOCATED ON THE BACK SURFACE OF THE GLASS DIRECTLY OPPOSITE THE GRATING PATTERNS (HEIGHT ADDED: 1.6mm/0.06" MAX).
- FLEXIBLE PRINTED CIRCUIT (FPC) WIRES ARE ROUTED ON THE BOTTOM SURFACE OF THE GLASS DIRECTLY OPPOSITE THE RECEIVE ARRAY PATTERNS (X AND Y AXIS).
- FLEXIBLE PRINTED CIRCUIT (FPC) WIRE DIRECTLY MATES MATES WITH INTELLITOUCH CONTROLLERS:
  - SERIAL (2500SZ PART NUMBER F20786-000)
  - USB (2500UZ, PART NUMBER 859778-000)
- THE TOUCH ACTIVE AREA IS LESS THAN THE VIEWABLE AREA TO FACILITATE SEALING.



| line No. | signal             |
|----------|--------------------|
| 1        | Y transmit - (GND) |
| 2        | Y transmit +       |
| 3        | Y transmit - (GND) |
| 4        | Y receive +        |
| 5        | Y receive -        |
| 6        | X receive +        |
| 7        | X receive -        |
| 8        | X transmit - (GND) |
| 9        | X transmit +       |
| 10       | X transmit - (GND) |

| mark | parts            | qty. | remarks |
|------|------------------|------|---------|
| 6    | double side tape | 5    |         |
| 5    | thin cable       | 1    |         |
| 4    | piezo            | 4    |         |
| 3    | grating          | 4    |         |
| 2    | reflection array | 4    |         |
| 1    | glass substrate  | 1    |         |

IntelliTouch Touch Panel

|        |                          |                  |
|--------|--------------------------|------------------|
| check  | drawing No. 695-Bx94FF19 | size 3 1/2"      |
| drawn  | 2/13/03 Fujita           | parts No.        |
| design | 2/13/03 Fujita           | Product Bx94FF19 |
| scale  | 1:1                      | PG-Bx94G         |
| unit   | mm                       | clear-RC-B94G    |

Touch Panel Systems K.K. A1  
Auto cad 502

| TOUCHSCREEN TABULATION   |                |
|--------------------------|----------------|
| PART NUMBER              | SURFACE FINISH |
| D45622-000<br>(BX94FF19) | ANTI GLARE     |

