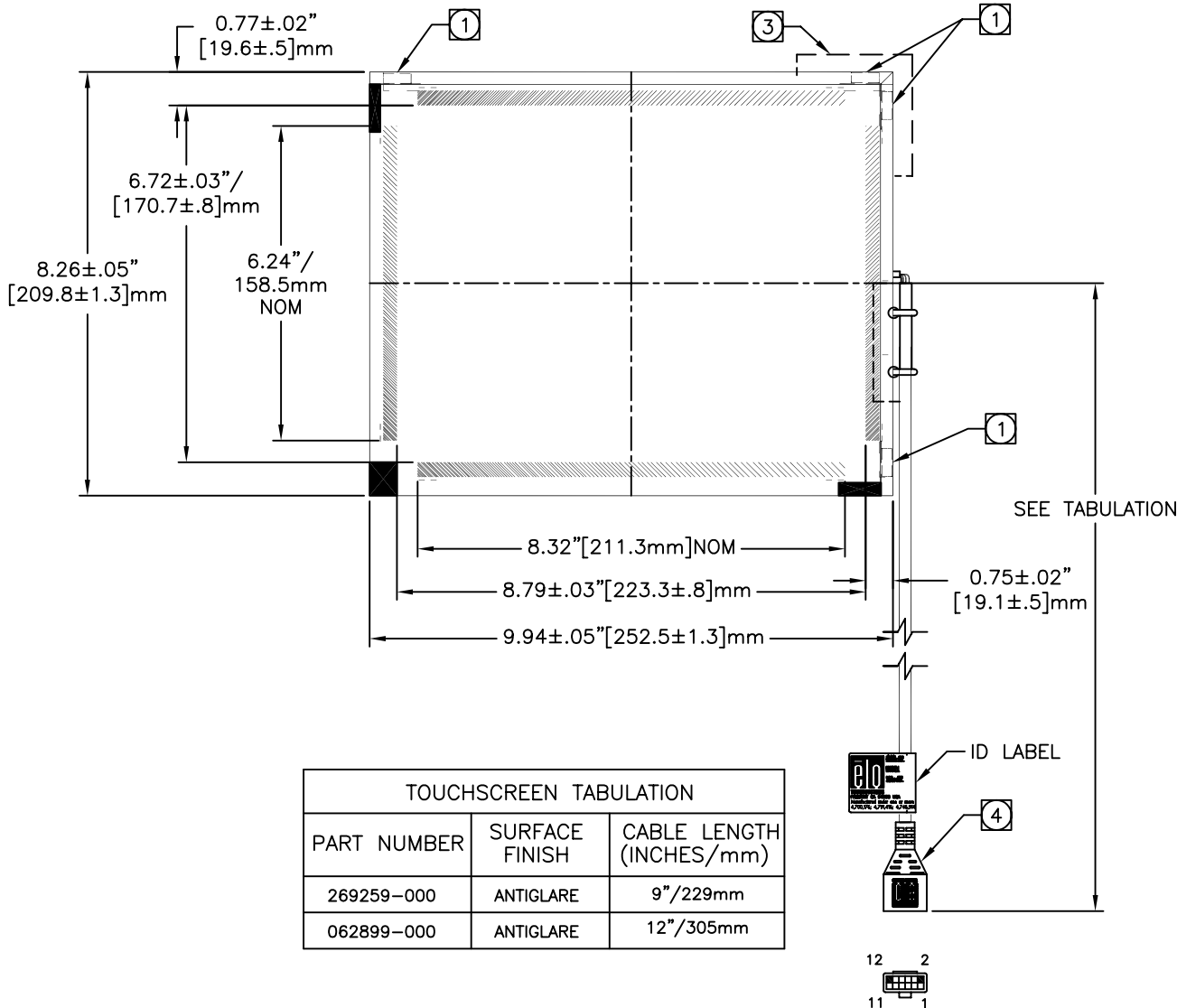


INTELLITOUCH® TOUCHSCREEN  
SCN-IT-FLT10.4-0X4-003-B



NOTES:

- 1 TRANSDUCERS ARE LOCATED AT THE POSITIONS SHOWN. GLASS IS BEVELED UNDER THE TRANSDUCERS.
2. NO MATERIAL EXTENDS MORE THAN 0.03"/.76mm BEYOND THE BACK SURFACE OF THE GLASS.
- 3 CABLE ROUTING ADDS A MAXIMUM OF 0.10"/2.5mm TO INDICATED SECTION OF SCREEN.
- 4 BERG 65043-031, 2x6 HOUSING WITH BERG 48239-000 RECEPTACLES, DIRECTLY MATES WITH ANY OF THE FOLLOWING:  
-INTELLITOUCH SERIAL CONTROL BOARD  
-012226 CABLE (2x6 TO 8" DB9 BULKHEAD)
5. GLASS THICKNESS: 0.12"/3.0 mm NOMINAL.
6. ALL DIMENSIONS ARE IN INCHES AND MILLIMETERS.
7. THE TOUCH ACTIVE AREA IS LESS THAN THE VIEWABLE AREA TO FACILITATE SEALING.

CONNECTION CHART

PIN	SIGNAL	INSULATION COLOR	JACKET COLOR
1	GROUND	OVERALL SHIELD	
2	KEY		
3	Y RECEIVE (+)	BLU	BLK
4	Y TRANSMIT (+)	BLU	GRY
5	Y RECEIVE (-)	BLK	BLK
6	Y TRANSMIT (-)	YEL	GRY
7	GROUND	INNER SHIELD	
8	X TRANSMIT (-)	RED	RED
9	X RECEIVE (-)	RED	BLK
10	X TRANSMIT (+)	GRN	RED
11	X RECEIVE (+)	WHT	BLK
12	KEY		