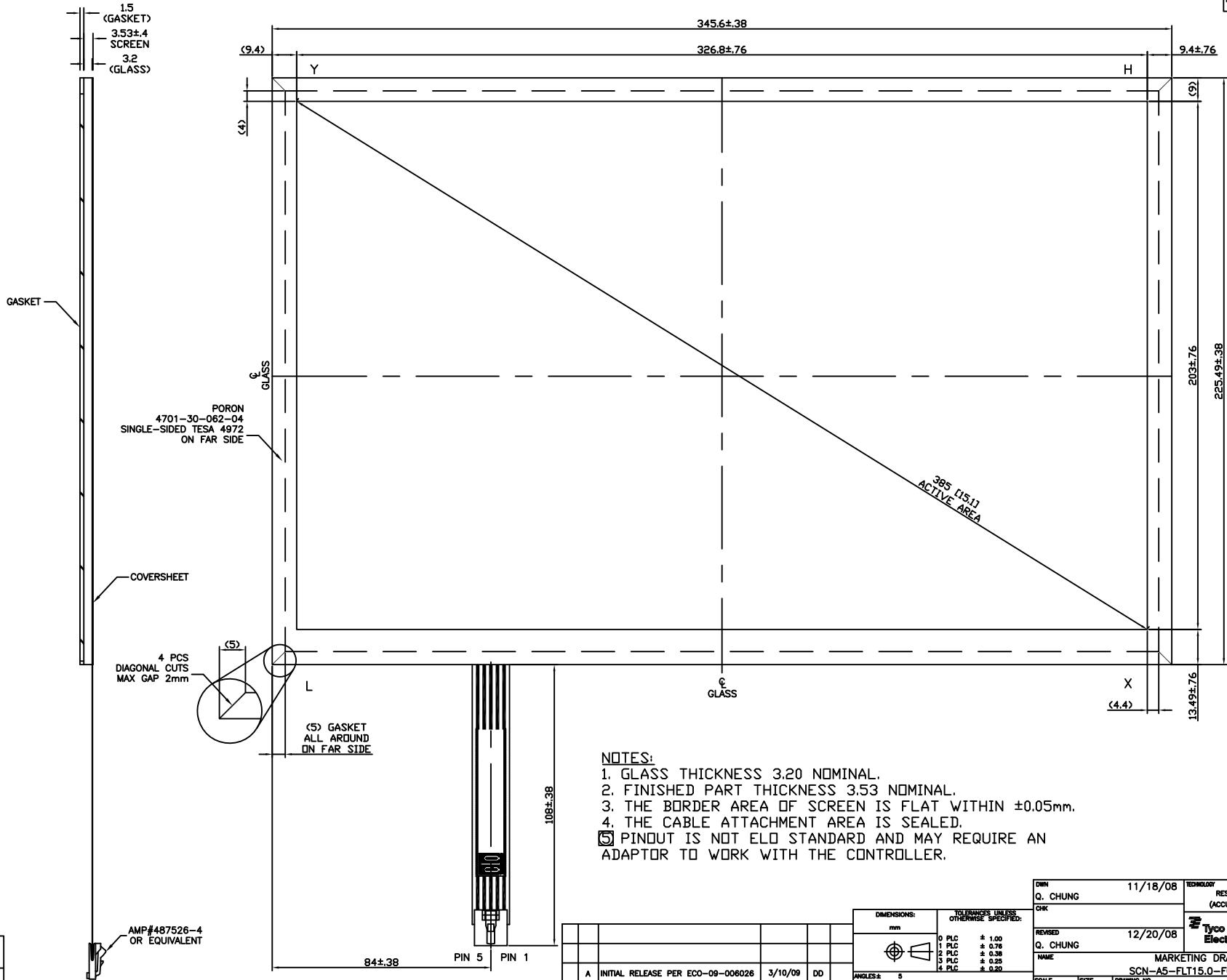


MS600752

THIS DRAWING IS A CONTROLLED DOCUMENT.

PART NO. E424780



NOTES:

1. GLASS THICKNESS 3.20 NOMINAL.
2. FINISHED PART THICKNESS 3.53 NOMINAL.
3. THE BORDER AREA OF SCREEN IS FLAT WITHIN ±0.05mm.
4. THE CABLE ATTACHMENT AREA IS SEALED.
5. PINOUT IS NOT ELD STANDARD AND MAY REQUIRE AN ADAPTOR TO WORK WITH THE CONTROLLER.

CONNECTOR PINOUT	
PIN NO	DESIGNATION
1	H
2	X
3	S
4	L
5	Y

THIS INFORMATION IS CONFIDENTIAL AND PROPRIETARY TO TYCO ELECTRONICS CORPORATION AND ITS WORKING SUBSIDIARIES AND EMPLOYEES. IT IS TO BE KEPT SECRET AND NOT REPRODUCED OR DISCLOSED IN ANY MANNER WITHOUT WRITTEN AUTHORIZATION FROM TYCO ELECTRONICS CORPORATION, HARRISBURG, PENNSYLVANIA, USA.

LOC 08  
 DIST 08

AMP 3307-7 REV 31MAR2000

P	LTR	REVISION RECORD	DATE	DWN	APVD
A		INITIAL RELEASE PER ECO-09-006026	3/10/09	DD	

DIMENSIONS:		TOLERANCES UNLESS OTHERWISE SPECIFIED:	
mm			
0 PLC	± 1.00		
1 PLC	± 0.76		
2 PLC	± 0.51		
3 PLC	± 0.25		
4 PLC	± 0.20		

DWN	Q. CHUNG	11/18/08	TECHNOLOGY	RESISTIVE (ACCUTOUCH)	HEAT TREAT	N/A
CHK						
REVISED	Q. CHUNG	12/20/08	Tyco Electronics Corporation Harrisburg, PA 17105-3608			
NAME: MARKETING DRAWING						
SCALE: 1:1						
SIZE: A2						
DRAWING NO: MS600751						
SHEET 1 OF 1						
REV: A						

D  
C  
B  
A