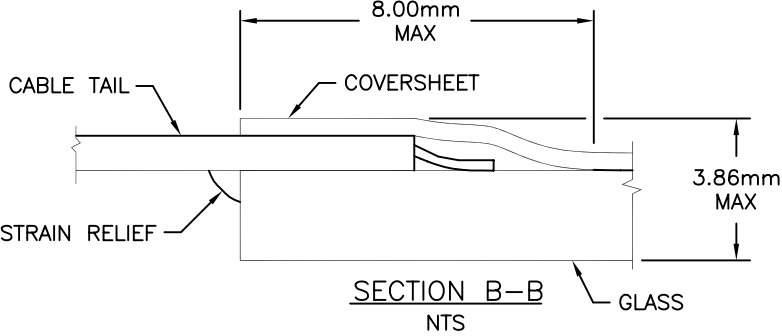
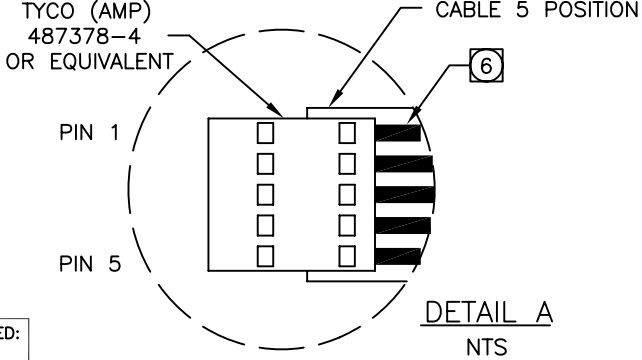
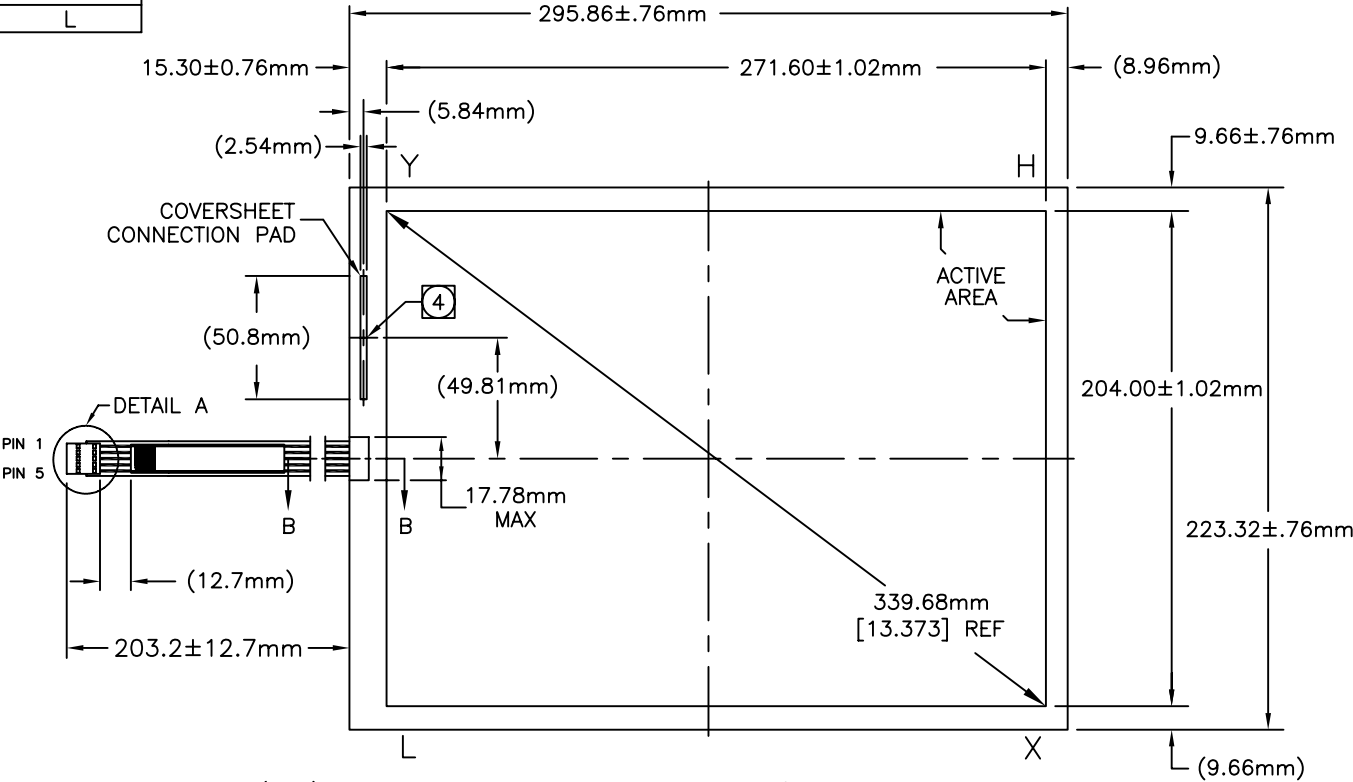


CONNECTOR PINOUT	
PIN NO.	DESIGNATION
1	H
2	X
3	S
4	Y
5	L

ACCUTOUCH® TOUCHSCREEN
SCN-A5-FLT13.3-Z01-OH1-R
ELO P/N: E366569

- NOTES:**
1. GLASS THICKNESS 3.18mm NOMINAL.
  2. FINISHED PART THICKNESS 3.48mm NOMINAL.
  3. FINISHED PART THICKNESS AT CABLE ATTACHMENT AREA 4.24mm MAX.
  - ④ FINISHED PART THICKNESS AT THE COVERSHEET CONTACT 3.86mm MAX.
  - ⑤ CABLE POSITION #1 IS TINNED, IF PRESENT.
  6. CABLE IS ATTACHED TO THE LEFT SIDE OF TOUCHSCREEN AT CENTER POINT AS SHOWN.



UNLESS OTHERWISE SPECIFIED:  
DIMENSIONS ARE IN mm