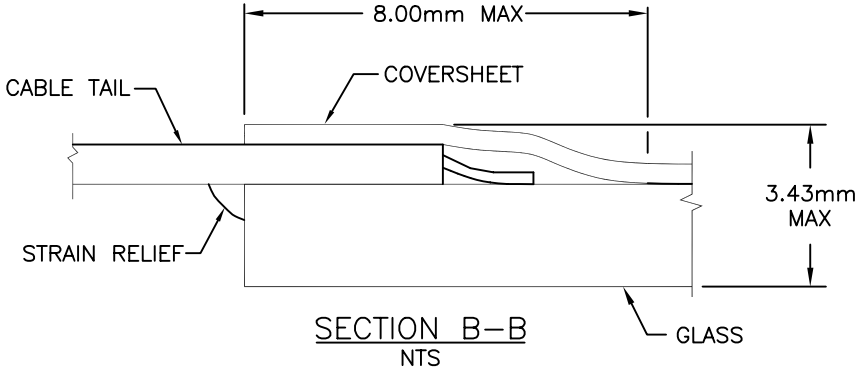
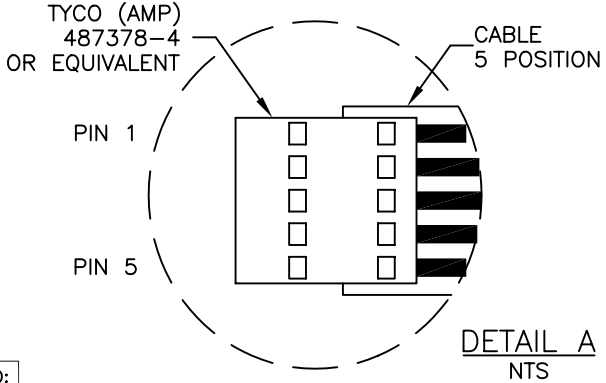
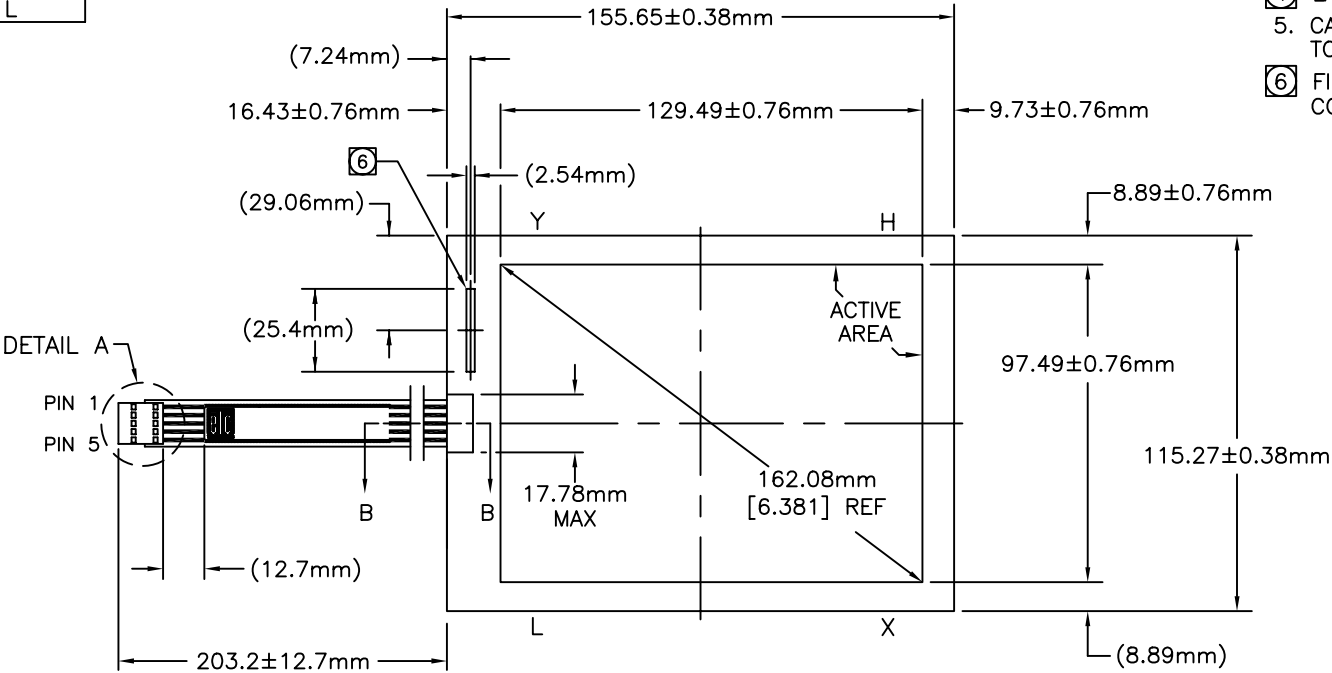


CONNECTOR PINOUT	
PIN NO.	DESIGNATION
1	H
2	X
3	S
4	Y
5	L

ACCUTOUCH® TOUCHSCREEN
SCN-A5-FLT06.4-Z02-OH1-R
ELO P/N: E019369

NOTES:

1. GLASS THICKNESS 2.36mm NOMINAL.
2. FINISHED PART THICKNESS 2.67mm NOMINAL.
3. FINISHED PART THICKNESS AT CABLE ATTACHMENT AREA 3.43mm MAX.
- ④ LABEL TO BE ATTACHED TO FRONT SIDE OF CABLE.
5. CABLE IS ATTACHED TO THE LEFT SIDE OF TOUCHSCREEN AT CENTER POINT AS SHOWN.
- ⑥ FINISHED PART THICKNESS AT THE COVERSHEET CONTACT 3.05mm MAX.



UNLESS OTHERWISE SPECIFIED:
DIMENSIONS ARE IN mm