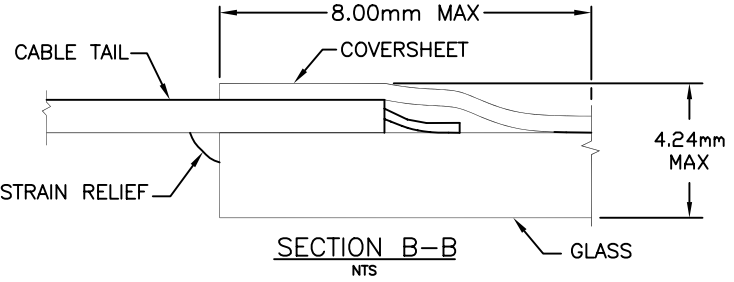
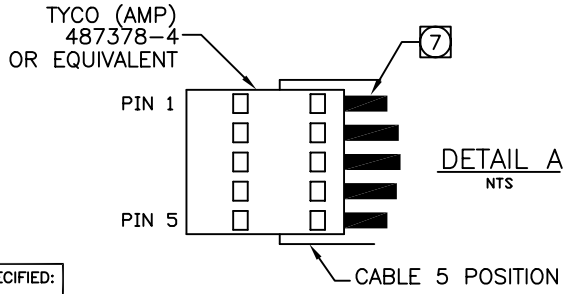
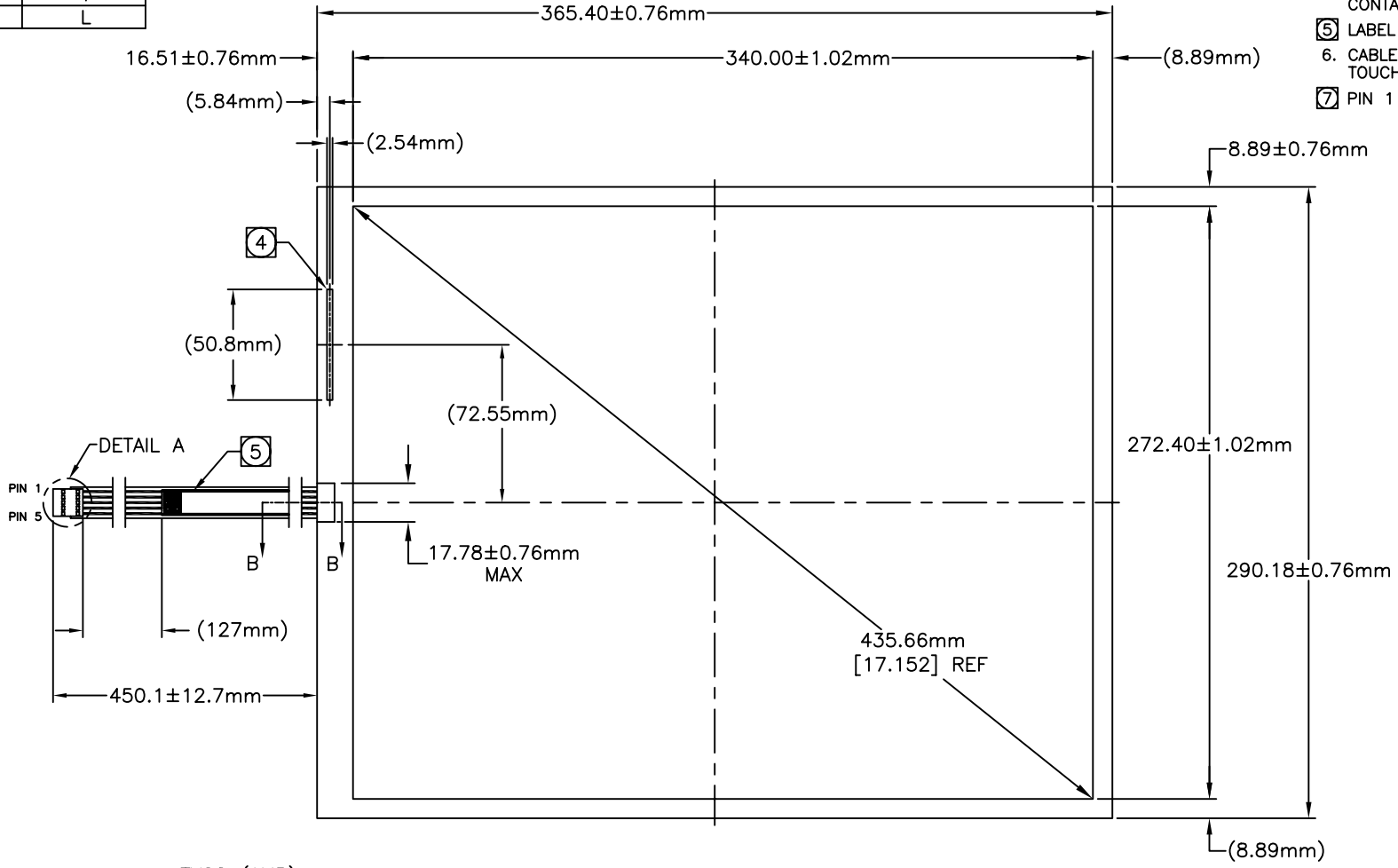


CONNECTOR PINOUT	
PIN NO	DESIGNATION
1	H
2	X
3	S
4	Y
5	L

ACCUTOUCH® TOUCHSCREEN
SCN-A5-FLT17.1-Z01-OH1-R
ELO P/N: E509854

- NOTES:
1. GLASS THICKNESS 3.18mm NOMINAL.
  2. FINISHED PART THICKNESS 3.48mm NOMINAL.
  3. FINISHED PART THICKNESS AT CABLE ATTACHMENT AREA 4.24mm MAX.
  4. FINISHED PART THICKNESS AT COVERSHEET CONTACT 3.86mm MAX.
  5. LABEL TO BE ATTACHED TO FRONT SIDE OF CABLE.
  6. CABLE IS ATTACHED TO THE LEFT SIDE OF TOUCHSCREEN AT CENTER POINT AS SHOWN.
  7. PIN 1 TO BE LOCATED AS SHOWN (SEE DETAIL A).



UNLESS OTHERWISE SPECIFIED:  
DIMENSIONS ARE IN MM