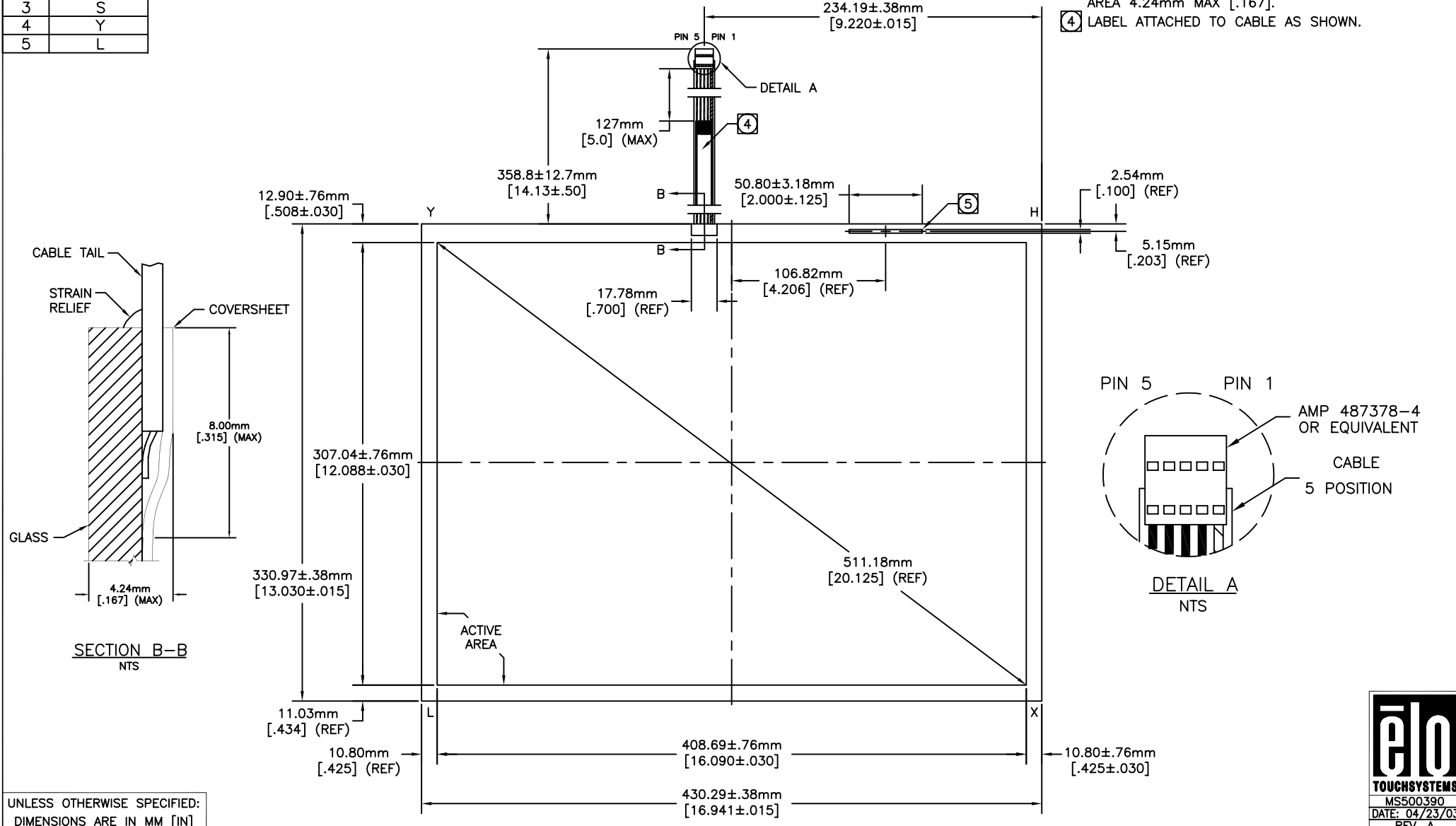


CONNECTOR PINOUT	
PIN NO.	DESIGNATION
1	H
2	X
3	S
4	Y
5	L

ACCUTOUCH® TOUCHSCREEN
 SCN-AT-FLT20.1-Z02-OH1
 ELO P/N: E93663-000

- NOTES:
1. GLASS THICKNESS 3.18mm NOMINAL [.125].
 2. FINISHED PART THICKNESS 3.48mm NOMINAL [.137].
 3. FINISHED PART THICKNESS AT CABLE ATTACHMENT AREA 4.24mm MAX [.167].
- ④ LABEL ATTACHED TO CABLE AS SHOWN.



UNLESS OTHERWISE SPECIFIED:
 DIMENSIONS ARE IN MM [IN]

