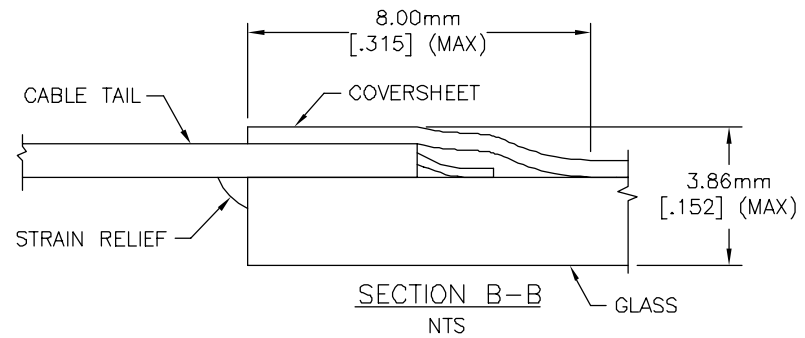
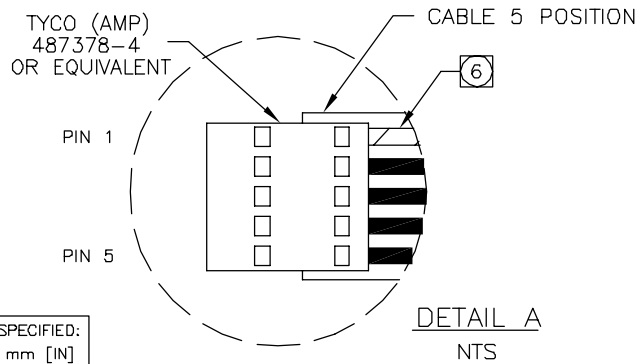
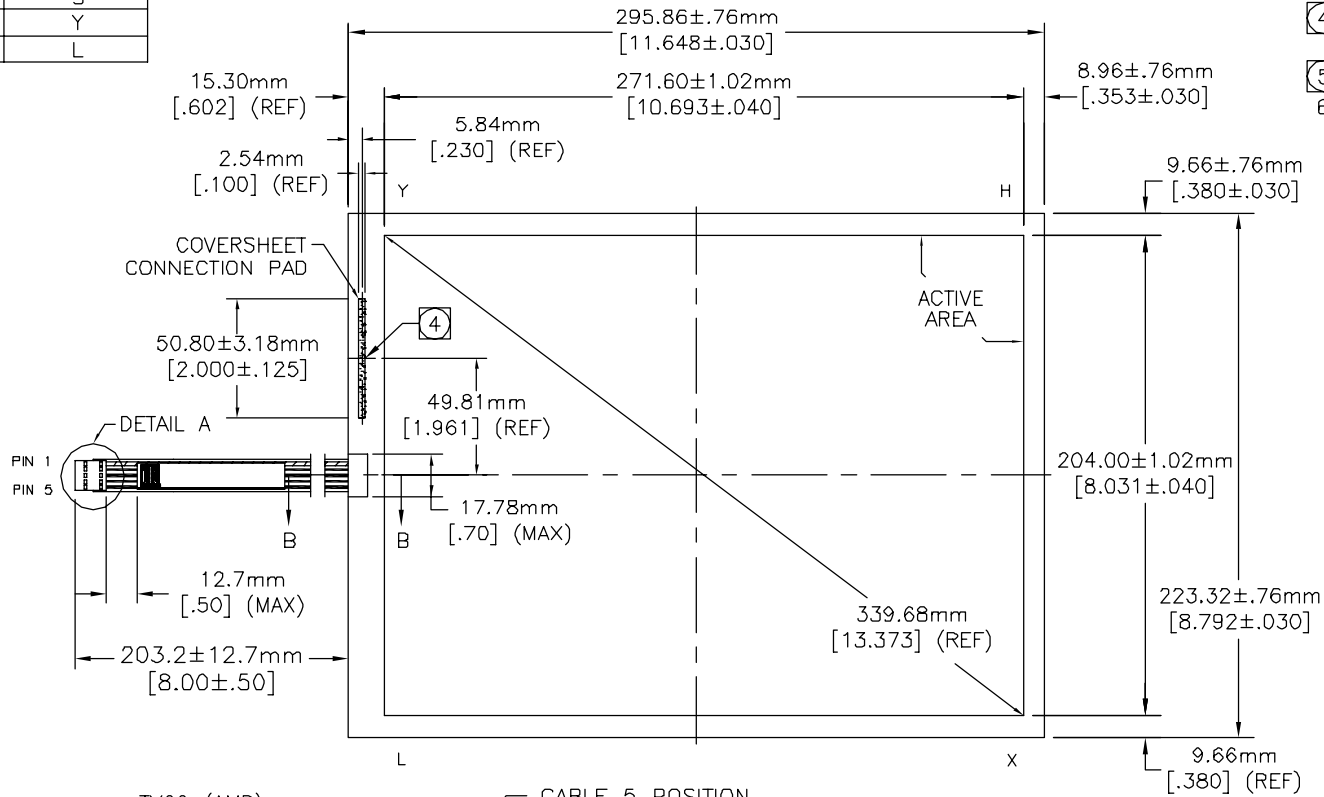


CONNECTOR PINOUT	
PIN NO.	DESIGNATION
1	H
2	X
3	S
4	Y
5	L

ACCUTOUCH® TOUCHSCREEN  
 SCN-AT-FLT13.3-Z01-OH1  
 ELO P/N: E77295-000

NOTES:

- GLASS THICKNESS 3.18mm NOMINAL [.125].
- FINISHED PART THICKNESS 3.48mm NOMINAL [.137].
- FINISHED PART THICKNESS AT CABLE ATTACHMENT AREA 4.24mm MAX [.167].
- FINISHED PART THICKNESS AT THE COVERSHEET CONTACT 3.86mm MAX [.152].
- CABLE POSITION #1 IS TINNED, IF PRESENT.
- CABLE IS ATTACHED TO THE LEFT SIDE OF TOUCHSCREEN AT CENTER POINT AS SHOWN.



UNLESS OTHERWISE SPECIFIED:  
 DIMENSIONS ARE IN mm [IN]