

elo TOUCH
SOLUTIONS



Elo Touch Solutions is a leading global supplier of touch-enabled technology, products and industry solutions.

www.elotouch.com



Elo Tablet: Designed for Mobility

Millions of real-life retail installations all over the world have helped Elo develop unique insight for this next generation of our touch computing innovation. The new Tablet directly answers the requirements of a mobile hardened store system for mobile POS, shopper assist, line busting, and inventory management.



Elo Tablet – 10.1”

Processor	Intel Atom N2600 Dual Core 1.6 GHz
Memory	2GB DDR3 – 1066 MHz (not expandable beyond 2GB)
Hard drive	32GB MSATA SSD
Operating systems	Windows embedded 7 standard (also licensed for Windows embedded 8 standard) No operating system
Touch technologies	Projected capacitive multi-touch
Comments	Integrated MSR, Barcode and Smart Card Reader; Wi-Fi, Bluetooth, NFC and RFID Ethernet via optional docking station



Why work with a leader?

Elo Touch Solutions, a pioneer in touchscreen technology, manufactures a complete line of touch solutions that simplify the interface between people and computers. Our solutions are designed for the demanding requirements of diverse markets and applications across the globe.



Leader in innovation and quality

As an inventor of touchscreen technology more than 40 years ago, we have been a pioneer ever since. Today, all our products are designed for touch and come in a wide variety of configurations and forms. Elo Touch Solutions products are state-of-the-art, with high-quality displays, stable, drift-free operation, consistent reliability and durability. And we pay attention to the tiniest details, so our customers consistently receive the best in engineering too.

Leader in touchscreen technology

We have such a wide range of touchscreen technologies we suit virtually any application. For decades, Elo Touch Solutions products have been successfully installed in applications such as cash registers, kiosks, vending machines, process automation or control, medical applications like pharmacies, hospitals and doctor's offices, ATM machines, web phones, and so on. The list is endless...

Leader in service and support

Doing business with us is easy. Our sales and service teams, as well as our distribution partners, are organized to be fast, competent and close to you. Our teams and our partners' teams take care that there is a technical support centre or an office nearby, with people who speak your language. And last, but not least, our customization department is dedicated to developing tailor-made solutions at your request.

- 40 years experience in the touchscreen industry
- Broadest offering of touch technologies for virtually any application
- Consistently reliable, accurate, and durable products
- Stable, drift-free operation; scratch-resistant
- Recognized durability and performance
- Wide variety of configurations and form factors for design flexibility
- First-class service and support with worldwide sales people, sales partners, technical support and warehouses
- Custom solutions for special requirements
- Long, worldwide warranties
- Worldwide agency approvals

An overview of our touch solutions



Components

- Touchscreens, touchscreen controllers and drivers
- Wide range of sizes from small to large
- Touchscreen technologies include:
Acoustic Pulse Recognition; 5-Wire Resistive; Surface Acoustic Wave; Projected Capacitive; Capacitive; Infrared



Desktop touchmonitors

- Wide range of sizes from 7" to 24"
- Entry-level, multi-function and healthcare models
- Standard and wide-screen formats
- Models with seamless zero-bezel design (uninterrupted surface area)
- Base can be reversed or removed for wall-mount
- Multifunction units with optional peripherals
- Choice of touchscreen technologies, single touch & multi-touch



Open-frame and wall mount touchmonitors

- Wide range of sizes from 12" to 42"
- Multiple mounting options include rear-mount, VESA mount, panel-mount, front-mount and rack-mount
- Standard and wide-screen formats
- Models with seamless zero-bezel design (true flat surface area)
- Compact and easy to integrate
- Choice of touchscreen technologies, single touch & multi-touch



All-in-One touchcomputers

- 15", 17", 19" and 22"; standard and wide-screen format
- Space-saving models with computing functionality integrated in the footprint of a standard LCD monitor and models designed for POS and healthcare applications
- Models with seamless zero-bezel design (uninterrupted surface area)
- Field-installable peripherals such as magnetic stripe reader, customer display, finger print reader and barcode scanner
- Choice of touchscreen technologies, single touch & multi-touch



Interactive Digital Signage displays

- 32", 42", 55" and 70"
- Optional field-installable computer modules in various configurations
- Wall-mount, optional stand for desktop use
- Landscape or portrait orientation
- Pure-glass touchscreens for superior image quality
- Choice of touchscreen technologies, single touch & multi-touch



Tablet

- Drives sales efficiency through point-of-service (POS) and point-of-information (POI) platforms that are portable, intuitive, reliable and secure
- 10.1" display
- Projected capacitive multi-touch touchscreen
- Rugged design
- Windows/Intel architecture

Turn opportunities into reality with our custom solutions

Standard touch solutions do not always address your specific needs. That's why Elo Touch Solutions has the capability to develop specialized touch solutions.

With more than 40 years of experience and millions of touch solutions installed across the globe we can develop exactly what you're looking for.

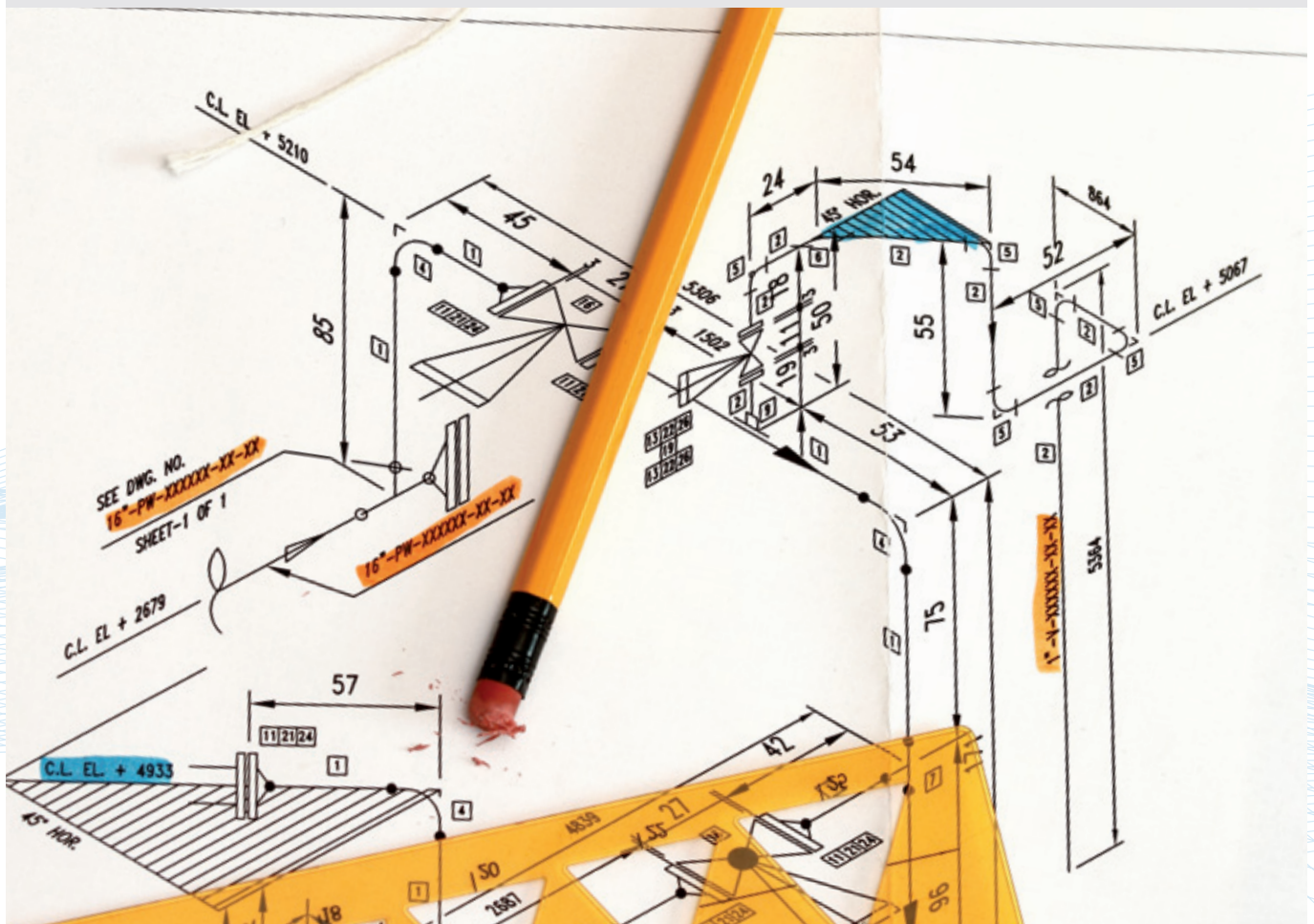
All it takes is talking to us!

Working from your specifications, we can quickly develop unique products that integrate seamlessly into your system and environment. Our staff oversees all the details from prototyping through production.

With an in-house mechanical design and prototyping staff we design and build "proof-of-concept" models and even short-run production parts. And our in-house compliance engineering staff is knowledgeable in all agency issues.

Some examples of our customization options:

- Different screen sizes and configurations
- Custom finishes and colors
- Private labeling
- Custom enclosures
- Sealing and shielding
- Special cabling
- Global agency certifications: UL, CSA, cUL, FCC, CE, CISPR, CTICK, VDE, and TÜV
- ... or any other customization you need.



A touchscreen technology for every application

Elo Touch Solutions has the widest portfolio of touchscreen technologies, each optimized for different operating characteristics and environments to suit your application requirements.

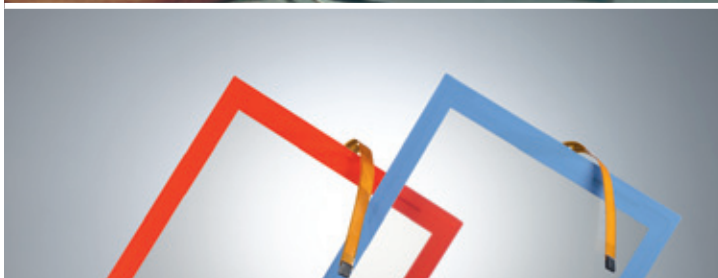
Technology



Acoustic Pulse Recognition (APR)



AccuTouch Five-wire resistive



AccuTouch Zero-bezel



CarrollTouch Infrared



IntelliTouch Surface acoustic wave



SecureTouch Anti-vandal surface acoustic wave

Benefits

- Optics and durability of pure glass
- Works with finger, glove, pen, credit card
- Resistant to water, dust, grease
- No wear-out mechanism
- Works even with scratches
- Zero-bezel design
- Small and large sizes

- Stable, drift-free operation
- Broad input flexibility
- Contamination resistance
- Accuracy in high-use applications
- Long product life
- Meets NEMA 4/4x/12 and IP 65 standards

- Same stable, accurate performance and specifications as standard AccuTouch
- Eliminates the traditional front bezel that can collect dust and dirt
- Enables easy integration
- Reduces material costs as well as supply chain and process complexity

- Low profile, high resolution
- No parallax
- High durability, vandal resistance, and safety
- Sealable from contaminants
- Operates in extreme environments

- Pure glass construction delivers the ultimate in image quality
- Stable, drift-free operation
- Continues to work even if scratched
- Sensitive touch response

- Tempered, heat or chemically strengthened glass
- High impact resistance (about 2.5 times stronger than IntelliTouch)
- Meets UL-60950 ball drop test
- Privacy filter option

Applications

- Restaurant and hospitality automation
- Point-of-Sale (POS) terminals
- Pharmacy automation
- Industrial automation
- Office automation
- Interactive digital signage
- Portable devices

- Point-of-Sale (POS) terminals
- Voting machines
- Industrial automation
- Medical equipment
- Office automation
- Retail automation
- Pharmacy automation

- Human Machine Interface (HMI) applications
- (same as standard AccuTouch)

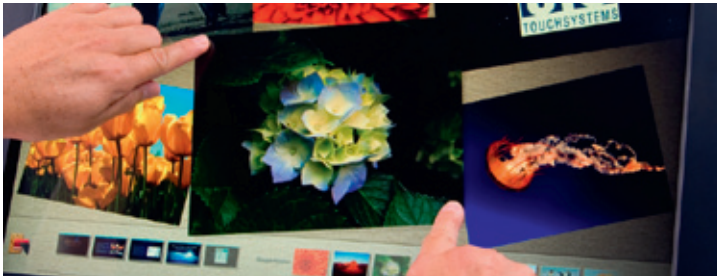
- Food processing
- Industrial automation
- Medical equipment
- In-vehicle and transportation
- Point-of-Sale (POS) terminals

- Kiosks
- Ticketing machines
- Gaming machines
- Light industrial
- Office automation
- Interactive digital signage

- ATMs
- Ticketing machines
- Kiosks

A touchscreen technology for every application

Technology



IntelliTouch Plus
Surface acoustic wave
with multi-touch capability



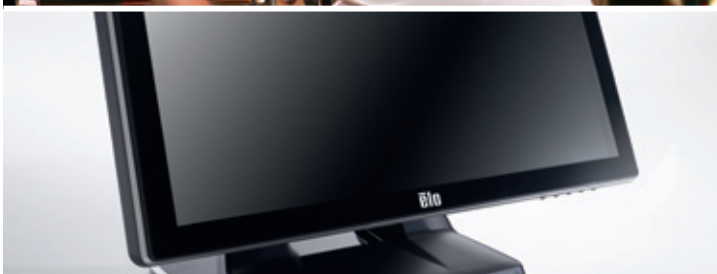
**IntelliTouch Zero-Bezel /
iTouch**
Surface acoustic wave



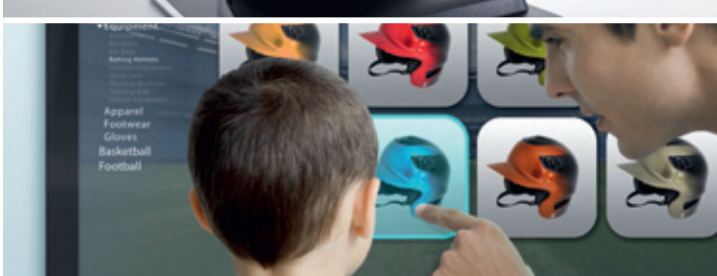
**IntelliTouch Zero-Bezel /
iTouch**
Surface acoustic wave
with multi-touch capability



Surface capacitive



IntelliTouch Pro
projected capacitive



Optical touch

Benefits

- Windows 7 and Windows 8 compatible for multi-touch interactivity
- Pure glass construction delivers the ultimate in image quality
- Fast, accurate dual-touch response
- Overcomes drawbacks of other multi-touch technologies such as ambient light variances

- Completely flat touchscreen, sleek and refined appearance
- No bezel required for easy integration
- Same fast, accurate and stable performance as IntelliTouch

- Same as for IntelliTouch Plus and iTouch

- Elo proprietary narrow Z-border for enhanced linearity
- Fast, sensitive touch response with excellent dragging performance
- Compatible with industry standard protocols including Elo SmartSet protocol

- Multi-touch
- Available in zero-bezel fully flat glass front surface
- No known wear-out mechanism
- Fast, accurate performance
- Works with gloves
- Easy care and cleaning, dust and liquid resistance

- Multi-touch response
- Superb transparency and color fidelity
- No wearing
- Works with any input device
- High resolution and accuracy

Applications

- Kiosks
- Gaming machines
- Interactive digital signage

- Kiosks
- Ticketing machines
- Gaming machines
- Gaming and amusement
- Office automation
- Interactive digital signage

- Same as for IntelliTouch Plus and iTouch

- Point-of-Sale (POS) terminals
- Gaming/Amusement
- Kiosks

- Retail & hospitality automation
- Point-of-Information (POI)
- Ticketing machines
- Office automation
- Kiosks

- Interactive digital signage
- Kiosks
- Self-service
- Education, museums
- Gaming machines

Desktop Touchmonitor Product Portfolio



1215L – 12"



1509L – 15"



1515L – 15"

Colour
Contrast ratio
Brightness (panel)
Viewing angle
Touch technologies

Grey
500:1
200 nits
140°/100°
AccuTouch, IntelliTouch

Black
300:1
220 nits
80°/40°
IntelliTouch

Grey or beige
500:1
250 nits
140°/125°
AccuTouch, IntelliTouch,
projected capacitive

Comments

Field-installable MSR

Field-installable MSR



1517L – 15"



1519L – 15"



1523L – 15"

Colour
Contrast ratio
Brightness (panel)
Viewing angle
Touch technologies

Black or white
700:1
250 nits
160°/140°
AccuTouch, Zero-Bezel AccuTouch,
IntelliTouch, iTouch

Grey
500:1
250 nits
90°/65°
AccuTouch, IntelliTouch, projected
capacitive, iTouch, iTouch Plus

Black or white
700:1
250 nits
160°/140°
iTouch Plus

Comments

Optional MSR, customer display

Field-installable MSR
Wide-aspect (16:9)

Optional MSR, RFID reader, customer
display, webcam



1529L – 15"



1715L – 17"



1717L – 17"

Colour
Contrast ratio
Brightness (panel)
Viewing angle
Touch technologies

Grey or beige
400:1
350 nits
140°/120°
AccuTouch, IntelliTouch

Grey
800:1
250 nits
160°/160°
AccuTouch, IntelliTouch, projected
capacitive

Black or white
800:1
250 nits
170°/160°
AccuTouch, Zero-Bezel AccuTouch,
IntelliTouch, iTouch

Comments

Integrated MSR

Field-installable MSR

Optional MSR, customer display



1723L – 17"

1729L – 17"

1900L – 19"

Colour
Contrast ratio
Brightness (panel)
Viewing angle
Touch technologies

Black or white
800:1
250 nits
170°/160°
iTouch Plus

Grey or beige
1000:1
300 nits
160°/160°
AccuTouch, IntelliTouch,

Grey or beige
1000:1
250 nits
160°/160°
IntelliTouch

Comments

MSR, RFID reader, customer display
web cam

MSR, speakers

Wide-aspect (16:10)
Also available in 22" (2200L)



1915L – 19"

1919L – 19"

2201L – 22"

Colour
Contrast ratio
Brightness (panel)
Viewing angle
Touch technologies

Grey
1000:1
300 nits
160°/155°
AccuTouch, IntelliTouch

Grey
1000:1
250 nits
170°/160°
AccuTouch, IntelliTouch, projected
capacitive, iTouch, iTouch Plus

Grey
1000:1
250 nits
170°/160°
IntelliTouch Plus, iTouch, projected
capacitive

Comments

Wide-aspect (16:9)
Field-installable MSR

Wide aspect (16:9)
MSR and webcam options



1919LM – 19"

1928L – 19"

2401LM – 24"

Colour
Contrast ratio
Brightness (panel)
Viewing angle
Touch technologies

White
1000:1
300 nits
170°/160°
AccuTouch, IntelliTouch, projected
capacitive

Grey or beige
1300:1
300 nits
178°/178°
AccuTouch, IntelliTouch

Black or White
3000:1
300 nits
178°/178°
IntelliTouch

Comments

For medical applications
also available in 15" (1519LM)

For medical applications:
also available in 15" (1528L)

For medical applications;
Wide aspect (16:9)

Open-frame Touchmonitor Product Portfolio



0700L – 7”	1247L – 12”	1537L – 15”
-------------------	--------------------	--------------------

Aspect ratio
Contrast ratio
Brightness (panel)
Viewing angle
Native resolution
Touch technologies

16:9
 500:1
 200 nits
 140°/100°
 800 x 480
 AccuTouch, no touch

4:3
 800:1
 450 nits
 160°/140°
 800 x 600 at 60 Hz
 IntelliTouch

4:3
 500:1
 250 nits
 140°/115°
 1024 x 768 at 60 Hz
 AccuTouch, CarrollTouch, IntelliTouch, SecureTouch

Comments

For use as second customer display or main display for small-screen applications



1541L – 15”	1739L – 17”	1930L & 1937L - 19”
--------------------	--------------------	--------------------------------

Aspect ratio
Contrast ratio
Brightness (panel)
Viewing angle
Native resolution
Touch technologies

16:9
 560:1
 250 nits
 170°/130°
 1366 x 768
 IntelliTouch Plus, AccuTouch

5:4
 1000:1
 250 nits
 170°/160°
 1280 x 1024 at 60 Hz
 AccuTouch, CarrollTouch, IntelliTouch, IntelliTouch Plus, SecureTouch

5:4
 1000:1
 250 nits
 170°/160°
 1280 x 1024 at 60 Hz
 IntelliTouch Pro, IntelliTouch Zero-Bezel / iTouch, iTouch Plus (1930L), AccuTouch, IntelliTouch, IntelliTouch Plus (1937L)



1938L – 19”	1931L & 1939L - 19”	1940L – 19”
--------------------	--------------------------------	--------------------

Aspect ratio
Contrast ratio
Brightness (panel)
Viewing angle
Native resolution
Touch technologies

16:10
 1000:1
 250 nits
 160°/160°
 1440 x 900 at 60 Hz
 IntelliTouch, SecureTouch

5:4
 1000:1
 250 nits
 178°/178°
 1280 x 1024 at 60 Hz
 IntelliTouch Pro, IntelliTouch Zero-Bezel / iTouch, iTouch Plus (1931L), AccuTouch, IntelliTouch, IntelliTouch Plus, SecureTouch (1939L)

16:9
 1000:1
 250 nits
 170°/160°
 1366 x 768
 IntelliTouch Plus, projected capacitive



2239L – 22"

2240L – 22"

2242L – 22"

Aspect ratio
Contrast ratio
Brightness (panel)
Viewing angle
Native resolution
Touch technologies

16:10
1000:1
300 nits
170°/160°
1680 x 1050 at 75 Hz
IntelliTouch

16:10
1000:1
400 nits
178°/178°
1680 x 1050 at 60 Hz
IntelliTouch

16:10
1000:1
300 nits
160°/160°
1680 x 1050 at 60 Hz
IntelliTouch Plus



2243L – 22"

2244L – 22"

2440L - 24"

Aspect ratio
Contrast ratio
Brightness (panel)
Viewing angle
Native resolution
Touch technologies

16:9
1000:1
250 nits
170°/160°
1920 x 1080
IntelliTouch, IntelliTouch Plus,
SecureTouch, projected capacitive

16:9
1000:1
250 nits
178°/178°
1920 x 1080
IntelliTouch, IntelliTouch Plus,
projected capacitive

16:9
1000:1
300 nits
170°/160°
1920 x 1080
IntelliTouch, IntelliTouch Plus, iTouch,
iTouch Plus, projected capacitive



2740L – 27"

3243L – 32"

4243L - 42"

Aspect ratio
Contrast ratio
Brightness (panel)
Viewing angle
Native resolution
Touch technologies

16:9
3000:1
300 nits
178°/178°
1920 x 1080
IntelliTouch, IntelliTouch Plus

16:9
3000:1
350 nits
178°/178°
1920 x 1080
IntelliTouch Plus

16:9
4000:1
500 nits
178°/178°
1920 x 1080
IntelliTouch Plus

All-in-One Touchcomputer Product Portfolio



15B2 - 15" and 17B2 - 17"

15B3 - 15" and 17B3 - 17"

15D1 - 15"

Processor
Memory
Hard drive
Operating systems
Touch technologies

Intel Atom 1.83GHz Dual-Core N2800
2GB DDR3 (upgradeable to 4GB)
320GB
Windows 7, no OS
iTouch Plus, AccuTouch

Intel 3.0GHz i3-3220 (Ivy Bridge)
2GB DDR3 (upgradeable to 8GB)
320GB
Windows 7, no OS
iTouch Plus, AccuTouch

Intel 2.5GHz Celeron Dual-Core G540
2GB DDR3 (upgradeable to 16GB)
320GB
Windows 7, no OS
AccuTouch, IntelliTouch

Comments

Fan-less, optional MSR, customer display, fingerprint reader, wireless, 2nd HDD, 7-inch rear-facing touch LCD

Optional MSR, customer display, fingerprint reader, wireless, 2nd HDD, RAID, 7-inch rear-facing touch LCD

MSR, fingerprint reader, rear display, barcode scanner, 2nd HDD, 7-inch rear-facing touch LCD



15E1

19C2 - 19" and 22C2 - 22"

19C3 - 19" and 22C3 - 22"

Processor
Memory
Hard drive
Operating systems

Fan-less Intel Atom 1.6GHz N270
2GB
320GB
No operating system

Intel Atom 1.83GHz Dual-Core N2800
2GB DDR3 (upgradeable to 4GB)
320GB
Windows 7, no OS

Intel 3.0GHz i3-3220 (Ivy Bridge)
2GB DDR3 (upgradeable to 8GB)
320GB
Windows 7, no OS

Touch technologies

iTouch

iTouch Plus, AccuTouch

iTouch Plus, AccuTouch

Comments

Wall- and pole-mount possible
Field-installable MSR, 7-inch rear-facing touch LCD

Fan-less, optional MSR, customer display, fingerprint reader, wireless, 2nd HDD, 7-inch rear-facing touch LCD

Optional MSR, customer display, fingerprint reader, wireless, 2nd HDD, RAID, 7-inch rear-facing touch LCD



19CM2 - 19" and 22CM2 - 22"

VuPoint M-Series - 15"

VuPoint M-Series - 19"

Processor
Memory
Hard drive
Operating systems

Intel Atom Dual-Core 1.66GHz
4GB (upgradeable to 4GB)
320GB
Windows 7, no OS

Intel 1.8GHz Dual Core Atom D525
4GB DDR3
320GB
Windows 7, no OS

Intel 1.1GHz Celeron Dual Core 847E
4GB DDR3
320GB
Windows 7, no OS

Touch technologies

AccuTouch, IntelliTouch Plus, iTouch

Projected capacitive, AccuTouch on demand

Projected capacitive, AccuTouch on demand

Comments

For medical applications. Also available with Intel Core 2 Duo 3.0GHz.

For medical applications. Magnetic Stripe Reader, RFID Reader2, Barcode Reader, Smart Card Reader

For medical applications. Magnetic Stripe Reader, RFID Reader2, Barcode Reader, Smart Card Reader

Interactive Digital Signage (IDS) Product Portfolio



	3201L – 32"	3209L – 32"	4201L – 42"
Enclosure	Black; portrait, landscape and tabletop capable	Grey; portrait and landscape capable	Black or white; portrait, landscape and tabletop capable
Display ratio	16:9; 1920 x 1080 (Full HD)	16:9; 1920 x 1080 (Full HD)	16:9; 1920 x 1080 (Full HD)
Form factor	Wall mount with optional desktop stand	Wall mount	Wall mount with optional desktop stand
Thickness	2.8" (72mm)	2.3" (59mm)	3.1" (78mm)
Contrast ratio	3000:1	3000:1	4000:1
Brightness (typical)	350 nits panel	350 nits panel	700 nits panel
Viewing angle	178°/178°	178°/178°	178°/178°
Touch technologies	IntelliTouch Plus, Projected Capacitive	IntelliTouch Plus	IntelliTouch Plus, Optical
Comments	Optional webcam; VGA, HDMI display port video; four 5W speakers; NFC adapter, OPS kit, EloView Remote Management compatible	Optional Remote On-Screen Display (OSD). No slot for computer module.	Optional webcam; VGA, HDMI display port video; four 5W speakers; NFC adapter, OPS kit, EloView Remote Management compatible



	4209L - 42"	5501L - 55"	7001L – 70"
Enclosure	Grey; portrait, landscape and tabletop capable	Black; portrait and landscape capable	Black; portrait and landscape capable
Display ratio	16:9; 1920 x 1080 (Full HD)	16:9; 1920 x 1080 (Full HD)	16:9; 1920 x 1080 (Full HD)
Form factor	Wall mount with optional desktop stand	Wall mount	Wall mount
Thickness	2.6" (67mm)	3.5" (89mm)	3.5" (89mm)
Contrast ratio	4000:1	4000:1	5000:1
Brightness (typical)	500 nits panel	700 nits panel	700 nits panel
Viewing angle	178°/178°	178°/178°	178°/178°
Touch technologies	IntelliTouch Plus	Optical	Optical
Comments	Optional Remote On-Screen Display (OSD). No slot for computer module.	Optional webcam; VGA, HDMI display port video; four 5W speakers; NFC adapter, OPS kit, EloView Remote Management compatible	Optional webcam; VGA, HDMI display port video; four 5W speakers; NFC adapter, OPS kit, EloView Remote Management compatible



IDS Computer Modules

Designed specifically for the new series of Elo IDS displays. No cables required, seamless docking integration.*

*not compatible with 3209L and 4209L

ECMG2-i3:
Intel Core i3 3.3GHz HD2500, 2GB, 320GB, Windows 7, no OS

ECMG2-i5:
Intel Core i5 3.6GHz HD4000, 4GB, 320GB, Windows 7, Windows 8.1, no OS

elo TOUCH SOLUTIONS



To find out more about the extensive range of Elo Touch Solutions products, go to

www.elotouch.com

or contact:

Tel: +32 16 704 500

Fax: +32 16 704 549

elosales@elotouch.com

Elo Touch Solutions, Inc. reserves the right to change or update, without notice, any information contained herein; to change, without notice, the design, construction, materials, processing or specifications of any products; and to discontinue or limit production or distribution of any products. Elo (logo) and Elo Touch Solutions are trademarks of Elo Touch Solutions, Inc. Copyright 2014 Elo Touch Solutions, Inc. All rights reserved. August 2014.

Medical and Healthcare Application Disclaimer:

It is the sole responsibility of any person intending to commercialize, market or use any of Elo Touch Solutions, Inc. or its family of companies («Elo») products for medical or healthcare applications to ensure that such product is adequate and appropriate for the person's intended use and complies with all applicable laws, regulations, codes and standards including but not limited to the European Union Medical Device Directive, United States Federal Food, Drug, and Cosmetic Act, regulations of the United States Food and Drug Administration (FDA), and other similar legislation in jurisdictions around the world, and for obtaining and maintaining any required regulatory approvals including but not limited to any required market clearances. Elo has not sought nor received any rulings from the FDA or any other federal, state, or local government agency or notified body as to the safety, effectiveness or appropriateness of its product for such applications. Persons intending to evaluate or use Elo's product for medical or healthcare purposes must rely on their own medical and legal judgment without any representation on the part of Elo.