



**elo** TOUCH  
SOLUTIONS



Elo Touch Solutions is a leading global supplier of touch-enabled technology, products and industry solutions.

[www.elotouch.com](http://www.elotouch.com)



# New from Elo Touch Solutions

Millions of real-life retail installations all over the world have helped Elo develop unique insight for this next generation of our touch computing innovation. The new Tablet directly answers the requirements of a mobile hardened store system for mobile POS, shopper assist, line busting, and inventory management.



## Elo Tablet – 10.1”

<b>Processor</b>	Intel Atom N2600 Dual Core 1.6 GHz
<b>Memory</b>	2GB DDR3 – 1066 MHz (not expendable beyond 2GB)
<b>Hard drive</b>	32GB MSATA SSD
<b>Operating systems</b>	Windows embedded 7 standard (also licensed for Windows embedded 8 standard) No operating system
<b>Touch technologies</b>	Projected capacitive multi-touch
<b>Comments</b>	Integrated MSR, Barcode and Smart Card Reader; Wi-Fi, Bluetooth, NFC and RFID Ethernet via optional docking station



## Why work with a leader?

Elo Touch Solutions, a pioneer in touchscreen technology, manufactures a complete line of touch solutions that simplify the interface between people and computers. Our solutions are designed for the demanding requirements of diverse markets and applications across the globe.



### Leader in innovation and quality

As an inventor of touchscreen technology more than 40 years ago, we have been a pioneer ever since. Today, all our products are designed for touch and come in a wide variety of configurations and forms. Elo Touch Solutions products are state-of-the-art, with high-quality displays, stable, drift-free operation, consistent reliability and durability. And we pay attention to the tiniest details, so our customers consistently receive the best in engineering too.

### Leader in touchscreen technology

We have such a wide range of touchscreen technologies we suit virtually any application. For decades, Elo Touch Solutions products have been successfully installed in applications such as cash registers, kiosks, vending machines, process automation or control, medical applications like pharmacies, hospitals and doctor's offices, ATM machines, web phones, and so on. The list is endless...

### Leader in service and support

Doing business with us is easy. Our sales and service teams, as well as our distribution partners, are organized to be fast, competent and close to you. Our teams and our partners' teams take care that there is a technical support centre or an office nearby, with people who speak your language. And last, but not least, our customization department is dedicated to developing tailor-made solutions at your request.

- 40 years experience in the touchscreen industry
- Broadest offering of touch technologies for virtually any application
- Consistently reliable, accurate, and durable products
- Stable, drift-free operation; scratch-resistant
- Recognized durability and performance
- Wide variety of configurations and form factors for design flexibility
- First-class service and support with worldwide sales people, sales partners, technical support and warehouses
- Custom solutions for special requirements
- Long, worldwide warranties
- Worldwide agency approvals

# An overview of our touch solutions



## Components

- Touchscreens, touchscreen controllers and drivers
- Wide range of sizes from small to large
- Touchscreen technologies include: Acoustic Pulse Recognition; 5-Wire Resistive; Surface Acoustic Wave; Projected Capacitive; Capacitive; Infrared; and technologies for handheld and mobile applications



## Desktop touchmonitors

- Wide range of sizes from 7" to 24"
- Entry-level, multi-function and healthcare models
- Standard and wide-screen formats
- Models with seamless zero-bezel design (uninterrupted surface area)
- Base can be reversed or removed for wall-mount
- Multifunction units with optional peripherals
- Choice of touchscreen technologies, single touch & multi-touch



## Chassis and wall mount touchmonitors

- Wide range of sizes from 12" to 32"
- Multiple mounting options include rear-mount, VESA mount, panel-mount, front-mount and rack-mount
- Standard and wide-screen formats
- Integrated precision mini-bezel with watertight 0.5mm seal
- Compact and easy to integrate
- Choice of touchscreen technologies, single touch & multi-touch



## All-in-One touchcomputers

- 15", 17", 19" and 22"; standard and wide-screen format
- Space-saving models with computing functionality integrated in the footprint of a standard LCD monitor and models designed for POS and healthcare applications
- Models with seamless zero-bezel design (uninterrupted surface area)
- Field-installable peripherals such as magnetic stripe reader, customer display, finger print reader and barcode scanner
- Choice of touchscreen technologies, single touch & multi-touch



## Interactive Digital Signage displays

- 32", 42", 55" and 70"
- Optional field-installable computer modules in various configurations
- Wall-mount, optional stand for desktop use
- Landscape or portrait orientation
- Pure-glass touchscreens for superior image quality
- Choice of touchscreen technologies, single touch & multi-touch



## Tablet

- Drives sales efficiency through point-of-service (POS) and point-of-information (POI) platforms that are portable, intuitive, reliable and secure
- 10.1" display
- Projected capacitive multi-touch touchscreen
- Rugged design
- Windows/Intel architecture



# Turn opportunities into reality with our custom solutions

Standard touch solutions do not always address your specific needs. That's why Elo Touch Solutions has the capability to develop specialized touch solutions.

With more than 40 years of experience and millions of touch solutions installed across the globe we can develop exactly what you're looking for.

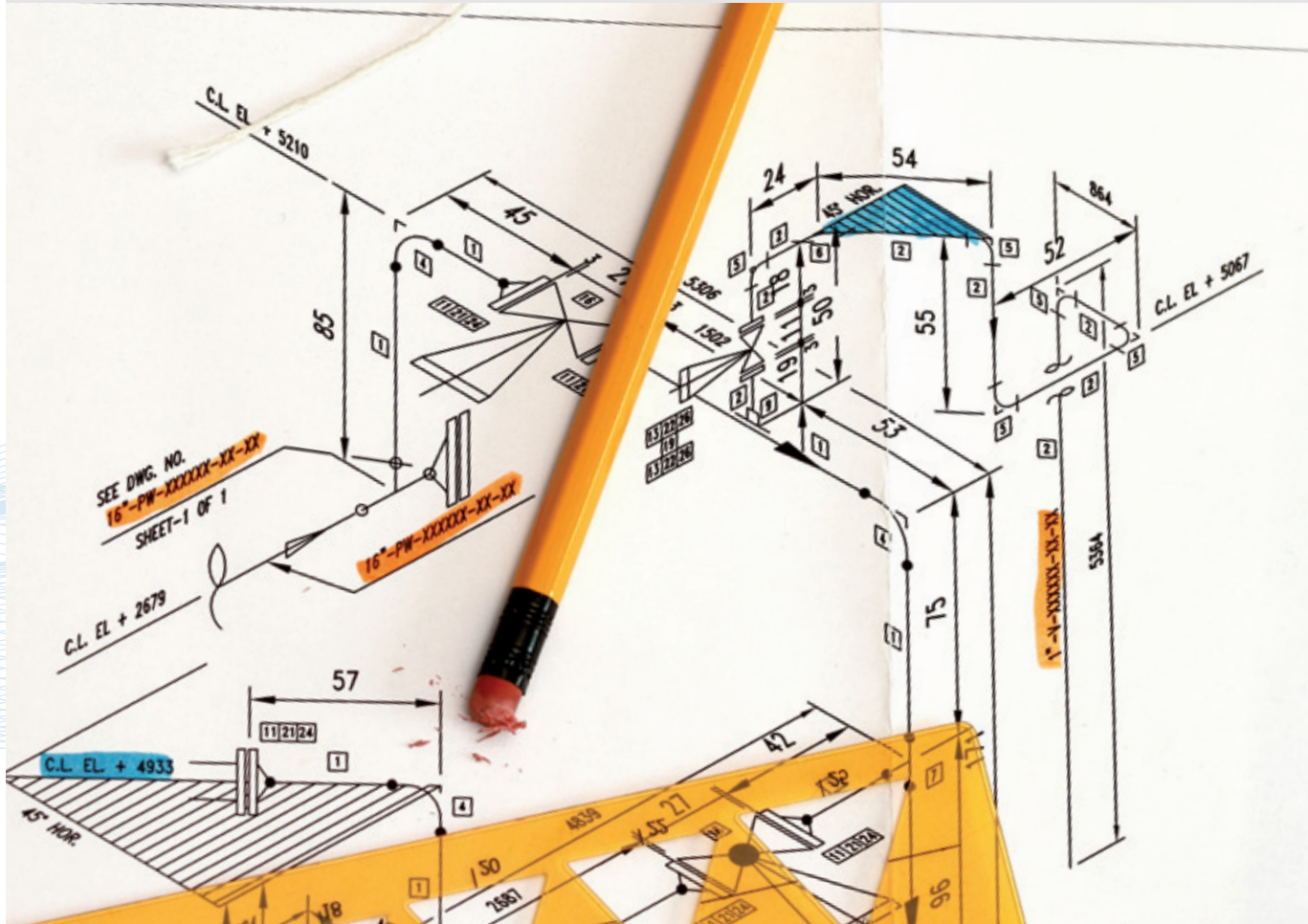
## All it takes is talking to us!

Working from your specifications, we can quickly develop unique products that integrate seamlessly into your system and environment. Our staff oversees all the details from prototyping through production.

With an in-house mechanical design and prototyping staff we design and build "proof-of-concept" models and even short-run production parts. And our in-house compliance engineering staff is knowledgeable in all agency issues.

### Some examples of our customization options:

- Different screen sizes and configurations
- Custom finishes and colors
- Private labeling
- Custom enclosures
- Sealing and shielding
- Special cabling
- Global agency certifications: UL, CSA, cUL, FCC, CE, CISPR, CTICK, VDE, and TÜV
- ... or any other customization you need.



# A touchscreen technology for every application

Elo Touch Solutions has the widest portfolio of touchscreen technologies, each optimized for different operating characteristics and environments to suit your application requirements.

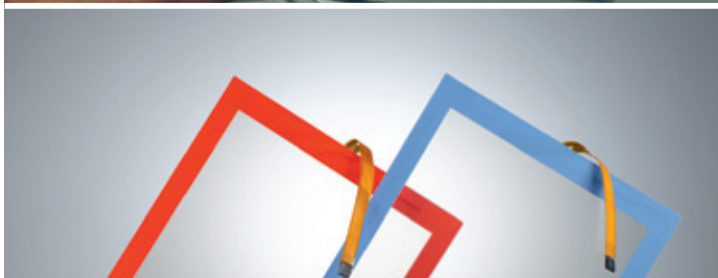
## Technology



**Acoustic Pulse Recognition (APR)**



**AccuTouch Five-wire resistive**



**AccuTouch Zero-bezel**



**CarrollTouch Infrared**



**IntelliTouch Surface acoustic wave**



**SecureTouch Anti-vandal surface acoustic wave**

## Benefits

- Optics and durability of pure glass
- Works with finger, glove, pen, credit card
- Resistant to water, dust, grease
- No wear-out mechanism
- Works even with scratches
- Zero-bezel design
- Small and large sizes

- Stable, drift-free operation
- Broad input flexibility
- Contamination resistance
- Accuracy in high-use applications
- Long product life
- Meets NEMA 4/4x/12 and IP 65 standards

- Same stable, accurate performance and specifications as standard AccuTouch
- Eliminates the traditional front bezel that can collect dust and dirt
- Enables easy integration
- Reduces material costs as well as supply chain and process complexity

- Low profile, high resolution
- No parallax
- High durability, vandal resistance, and safety
- Sealable from contaminants
- Operates in extreme environments

- Pure glass construction delivers the ultimate in image quality
- Stable, drift-free operation
- Continues to work even if scratched
- Sensitive touch response

- Tempered, heat or chemically strengthened glass
- High impact resistance (about 2.5 times stronger than IntelliTouch)
- Meets UL-60950 ball drop test
- Privacy filter option

## Applications

- Restaurant and hospitality automation
- Point-of-Sale (POS) terminals
- Pharmacy automation
- Industrial automation
- Office automation
- Interactive digital signage
- Portable devices

- Point-of-Sale (POS) terminals
- Voting machines
- Industrial automation
- Medical equipment
- Office automation
- Retail automation
- Pharmacy automation

- Human Machine Interface (HMI) applications
- (same as standard AccuTouch)

- Food processing
- Industrial automation
- Medical equipment
- In-vehicle and transportation
- Point-of-Sale (POS) terminals

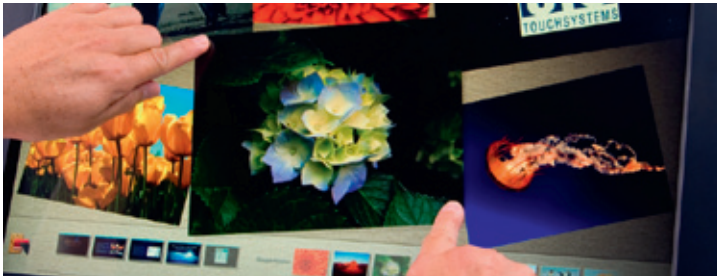
- Kiosks
- Ticketing machines
- Gaming machines
- Light industrial
- Office automation
- Interactive digital signage

- ATMs
- Ticketing machines
- Kiosks



# A touchscreen technology for every application

## Technology



**IntelliTouch Plus**  
Surface acoustic wave  
with multi-touch capability



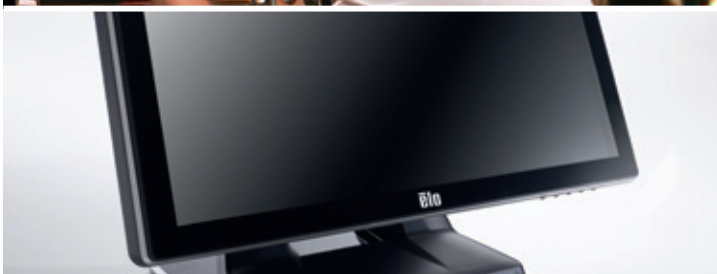
**iTouch**  
Zero-bezel surface  
acoustic wave



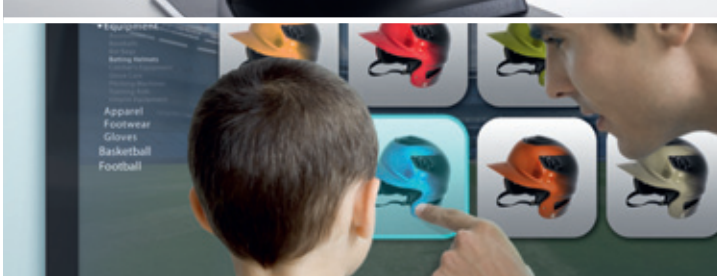
**iTouch Plus**  
Zero-bezel surface  
acoustic wave  
with multi-touch capability



**Surface capacitive**



**Projected capacitive  
(PCAP)**



**Optical touch**



## Benefits

- Windows 7 Additional Qualification (AQ) compliant for multi-touch interactivity
- Pure glass construction delivers the ultimate in image quality
- Fast, accurate dual-touch response
- Overcomes drawbacks of other multi-touch technologies such as ambient light variances

- Completely flat touchscreen, sleek and refined appearance
- No bezel required for easy integration
- Same fast, accurate and stable performance as IntelliTouch

- Same as for IntelliTouch Plus and iTouch

- Elo proprietary narrow Z-border for enhanced linearity
- Fast, sensitive touch response with excellent dragging performance
- Compatible with industry standard protocols including Elo SmartSet protocol

- Dual-touch
- Available in zero-bezel fully flat glass front surface
- No known wear-out mechanism
- Fast, accurate performance
- Works with gloves
- Easy care and cleaning, dust and liquid resistance

- Multi-touch response: up to 4 touches
- Superb transparency and color fidelity
- No wearing
- Works with any input device
- High resolution and accuracy

## Applications

- Kiosks
- Gaming machines
- Interactive digital signage

- Kiosks
- Ticketing machines
- Gaming machines
- Gaming and amusement
- Office automation
- Interactive digital signage

- Same as for IntelliTouch Plus and iTouch

- Point-of-Sale (POS) terminals
- Gaming/Amusement
- Kiosks

- Retail & hospitality automation
- Point-of-Information (POI)
- Ticketing machines
- Office automation
- Kiosks

- Interactive digital signage
- Kiosks
- Self-service
- Education, museums
- Gaming machines

# Desktop Touchmonitor Product Portfolio



**1215L – 12"**

**1509L – 15"**

**1515L – 15"**

**Colour**  
**Contrast ratio**  
**Brightness (panel)**  
**Viewing angle**  
**Touch technologies**

Grey  
500:1  
200 nits  
140°/100°  
AccuTouch, IntelliTouch

Black  
300:1  
220 nits  
80°/40°  
IntelliTouch

Grey or beige  
500:1  
250 nits  
140°/125°  
AccuTouch, IntelliTouch,  
projected capacitive

**Comments**

Field-installable MSR

Field-installable MSR



**1517L – 15"**

**1519L – 15"**

**1523L – 15"**

**Colour**  
**Contrast ratio**  
**Brightness (panel)**  
**Viewing angle**  
**Touch technologies**

Black or white  
700:1  
250 nits  
160°/140°  
iTouch, AccuTouch

Grey  
500:1  
250 nits  
90°/65°  
AccuTouch, IntelliTouch, projected  
capacitive, iTouch

Black or white  
700:1  
250 nits  
160°/140°  
iTouch Plus

**Comments**

Optional MSR, customer display

Field-installable MSR  
Wide-aspect (16:9)

Optional MSR, RFID reader, customer  
display web cam



**1529L – 15"**

**1715L – 17"**

**1717L – 17"**

**Colour**  
**Contrast ratio**  
**Brightness (panel)**  
**Viewing angle**  
**Touch technologies**

Grey or beige  
400:1  
350 nits  
140°/120°  
AccuTouch, IntelliTouch

Grey  
800:1  
250 nits  
160°/160°  
AccuTouch, IntelliTouch, projected  
capacitive

Black or white  
800:1  
250 nits  
170°/160°  
iTouch, AccuTouch

**Comments**

MSR, tall or short base

Field-installable MSR

Optional MSR, customer display



1723L – 17"

1729L – 17"

1900L – 19"

Colour  
Contrast ratio  
Brightness (panel)  
Viewing angle  
Touch technologies

Black or white  
800:1  
250 nits  
170°/160°  
iTouch Plus

Grey or beige  
1000:1  
300 nits  
160°/160°  
AccuTouch, IntelliTouch,

Grey or beige  
1000:1  
250 nits  
160°/160°  
IntelliTouch

Comments

MSR, RFID reader, customer display  
web cam

MSR, Fingerprint reader, rear display,  
speakers, barcode scanner

Wide-aspect (16:10)  
Also available in 22" (2200L)



1915L – 19"

1919L – 19"

1919LM – 19"

Colour  
Contrast ratio  
Brightness (panel)  
Viewing angle  
Touch technologies

Grey  
1000:1  
300 nits  
160°/155°  
AccuTouch, IntelliTouch

Grey  
1000:1  
250 nits  
170°/160°  
AccuTouch, IntelliTouch, projected  
capacitive, iTouch

White  
1000:1  
300 nits  
170°/160°  
AccuTouch, IntelliTouch, projected  
capacitive

Comments

Wide-aspect (16:9)  
Field-installable MSR

For medical applications  
also available in 15" (1519LM)



1928L – 19"

2201L – 22"

2401LM – 24"

Colour  
Contrast ratio  
Brightness (panel)  
Viewing angle  
Touch technologies

Grey or beige  
1300:1  
300 nits  
178°/178°  
AccuTouch, IntelliTouch

Grey  
1000:1  
250 nits  
170°/160°  
IntelliTouch Plus, iTouch, projected  
capacitive

Black or White  
3000:1  
300 nits  
178°/178°  
IntelliTouch

Comments

For medical applications:  
also available in 15" (1528L)

Wide aspect (16:9)  
MSR and webcam options

For medical applications;  
Wide aspect (16:9)

# Open-frame Touchmonitor Product Portfolio



**0700L – 7"**                      **1247L – 12"**                      **1537L – 15"**

<b>Aspect ratio</b>	16:9	4:3	4:3
<b>Contrast ratio</b>	500:1	500:1	500:1
<b>Brightness (panel)</b>	200 nits	350 nits	250 nits
<b>Viewing angle</b>	140°/100°	130°/105°	140°/115°
<b>Native resolution</b>	800 x 480	800 x 600 at 60 Hz	1024 x 768 at 60 Hz
<b>Touch technologies</b>	AccuTouch, no touch	IntelliTouch	AccuTouch, CarrollTouch, IntelliTouch, SecureTouch

**Comments** For use as second customer display or main display for small-screen applications



**1541L – 15"**                      **1739L – 17"**                      **1937L – 19"**

<b>Aspect ratio</b>	16:9	5:4	5:4
<b>Contrast ratio</b>	560:1	1000:1	800:1
<b>Brightness (panel)</b>	250 nits	250 nits	250 nits
<b>Viewing angle</b>	170°/130°	160°/160°	160°/155°
<b>Native resolution</b>	1366 x 768	1280 x 1024 at 60 Hz	1280 x 1024 at 60 Hz
<b>Touch technologies</b>	IntelliTouch Plus, AccuTouch	AccuTouch, CarrollTouch, IntelliTouch, SecureTouch	AccuTouch, IntelliTouch



**1938L – 19"**                      **1939L – 19"**                      **1940L – 19"**

<b>Aspect ratio</b>	16:10	5:4	16:9
<b>Contrast ratio</b>	1000:1	1300:1	1000:1
<b>Brightness (panel)</b>	250 nits	250 nits	250 nits
<b>Viewing angle</b>	160°/160°	178°/178°	170°/160°
<b>Native resolution</b>	1440 x 900 at 60 Hz	1280 x 1024 at 60 Hz	1366 x 768
<b>Touch technologies</b>	Acoustic Pulse Recognition, IntelliTouch, SecureTouch	AccuTouch, CarrollTouch, IntelliTouch, SecureTouch	IntelliTouch Plus, projected capacitive





**2239L – 22"**

**2240L – 22"**

**2242L – 22"**

**Aspect ratio**  
**Contrast ratio**  
**Brightness (panel)**  
**Viewing angle**  
**Native resolution**  
**Touch technologies**

16:10  
1000:1  
300 nits  
170°/160°  
1680 x 1050 at 75 Hz  
IntelliTouch

16:10  
1000:1  
400 nits  
178°/178°  
1680 x 1050 at 60 Hz  
IntelliTouch

16:10  
1000:1  
300 nits  
160°/160°  
1680 x 1050 at 60 Hz  
IntelliTouch Plus



**2243L – 22"**

**2244L – 22"**

**2740L – 27"**

**Aspect ratio**  
**Contrast ratio**  
**Brightness (panel)**  
**Viewing angle**  
**Native resolution**  
**Touch technologies**

16:9  
1000:1  
250 nits  
170°/160°  
1920 x 1080  
IntelliTouch, IntelliTouch Plus,  
projected capacitive

16:9  
1000:1  
250 nits  
178°/178°  
1920 x 1080  
IntelliTouch, IntelliTouch Plus,  
projected capacitive

16:9  
3000:1  
300 nits  
178°/178°  
1920 x 1080  
IntelliTouch, IntelliTouch Plus



**3243L – 32"**

**Aspect ratio**  
**Contrast ratio**  
**Brightness (panel)**  
**Viewing angle**  
**Native resolution**  
**Touch technologies**

16:9  
3000:1  
350 nits  
178°/178°  
1920 x 1080  
IntelliTouch Plus

# All-in-One Touchcomputer Product Portfolio



## COOL & QUIET 15B2 - 15" and 17B2 - 17"

## PERFORMANCE ULTRA 15B3 - 15" and 17B3 - 17"

## 15D1 - 15"

**Processor**  
**Memory**  
**Hard drive**  
**Operating systems**  
**Touch technologies**

Intel Atom 1.83GHz Dual-Core N2800  
2GB DDR3 (upgradeable to 4GB)  
320GB  
Windows 7, Windows XP, no OS  
iTouch Plus, AccuTouch

Intel 3.0GHz i3-3220 (Ivy Bridge)  
2GB DDR3 (upgradeable to 8GB)  
320GB  
Windows 7, Windows XP, no OS  
iTouch Plus, AccuTouch

Intel 2.5GHz Celeron Dual-Core G540  
2GB DDR3 (upgradeable to 16GB)  
320GB  
Windows 7, Windows XP, No OS  
AccuTouch, IntelliTouch

**Comments**

Fan-less, optional MSR, customer display, fingerprint reader, wireless, SSD, 2<sup>nd</sup> HDD

Fan-less, optional MSR, customer display, fingerprint reader, wireless, SSD, 2<sup>nd</sup> HDD, RAID

MSR, fingerprint reader, rear display, barcode scanner, 2<sup>nd</sup> hard drive



## 15E1

## 19C2 - 19" and 22C2 - 22"

## 19C3 - 19" and 22C3 - 22"

**Processor**  
**Memory**  
**Hard drive**  
**Operating systems**

Fan-less Intel Atom 1.6GHz N270  
1GB (replaceable with 2GB)  
160GB  
No operating system

Intel Atom 1.83GHz Dual-Core N2800  
2GB DDR3 (upgradeable to 4GB)  
320GB  
Windows 7, Windows XP, no OS

Intel 3.0GHz i3-3220 (Ivy Bridge)  
2GB DDR3 (upgradeable to 8GB)  
320GB  
Windows 7, Windows XP, no OS

**Touch technologies**

iTouch

iTouch Plus, AccuTouch

iTouch Plus, AccuTouch

**Comments**

Wall- and pole-mount possible  
Field-installable MSR

Fan-less, optional MSR, customer display, fingerprint reader, wireless, SSD, 2<sup>nd</sup> HDD

Fan-less, optional MSR, customer display, fingerprint reader, wireless, SSD, 2<sup>nd</sup> HDD, RAID



## 19CM2 - 19" and 22CM2 - 22"

## VuPoint M-Series - 15"

## VuPoint M-Series - 19"

**Processor**  
**Memory**  
**Hard drive**  
**Operating systems**

Intel Atom Dual-Core 1.66GHz  
2GB  
160GB  
Windows 7, No OS

Intel 1.8GHz Dual Core Atom D525  
4GB DDR3  
320GB  
No OS

Intel 1.1GHz Celeron Dual Core 847E  
4GB DDR3  
320GB  
No OS

**Touch technologies**

AccuTouch, IntelliTouch Plus, iTouch

Projected capacitive, AccuTouch on demand

Projected capacitive, AccuTouch on demand

**Comments**

For medical applications. Also available with Intel Core 2 Duo 3.0GHz.

For medical applications. Magnetic Stripe Reader, RFID Reader2, Barcode Reader, Smart Card Reader

For medical applications. Magnetic Stripe Reader, RFID Reader2, Barcode Reader, Smart Card Reader

# Interactive Digital Signage (IDS) Product Portfolio



**3201L – 32”**

**4201L – 42”**

**5500L - 55”**

<b>Enclosure</b>	Black; operational in portrait and landscape mode	Black and white; operational in portrait and landscape mode	Dark grey; operational in portrait or landscape mode
<b>Aspect ratio</b>	16:9	16:9	16:9
<b>Form factor</b>	Wall mount optional desktop stand	Wall mount with optional desktop stand	Wall mount with optional desktop stand
<b>Contrast ratio</b>	3000:1	4000:1	4000:1
<b>Brightness (typical)</b>	315 nits	630 nits	405 nits
<b>Viewing angle</b>	178°/178°	178°/178°	178°/178°
<b>Touch technologies</b>	IntelliTouch Plus	IntelliTouch, Optical	IntelliTouch, Optical
<b>Comments</b>	True High Definition (HD), analog VGA and HDCP-capable HDMI 1.3, video; four 5W stereo speakers, optional webcam, Near Field Communications (NFC)	Full HD, integrated NFC capability, analog VGA and HDCP-capable HDMI 1.3, video; four 5W speakers, optional webcam, Near Field Communications (NFC)	True High Definition (HD) 1080p (1920 x 1080); optional webcam,; analog VGA and HDCP-capable HDMI 1.3; two 10W speakers, optional webcam, Near Field Communications (NFC)



**7001L – 70”**

**IDS Computer Modules**

<b>Enclosure</b>	Black; operational in portrait or landscape mode	Designed specifically for the 5500L. No cables required; seamless docking integration.	Designed specifically for the 3201L, 4201L and 7001L. No cables required, seamless docking integration. Intel OPS compliant.
<b>Aspect ratio</b>	16:9		
<b>Form factor</b>	Wall mount with optional desktop stand		
<b>Contrast ratio</b>	5000:1		
<b>Brightness (typical)</b>	630 nits		
<b>Viewing angle</b>	176°/176°		
<b>Touch technologies</b>	Optical		
<b>Comments</b>	Full HD, analog VGA and HDCP-capable HDMI 1.3, video; four 5W speakers, optional webcam, Near Field Communications (NFC)	<b>ECM3 Module:</b> Intel i5 2.50GHz, 4GB, 320GB, Windows 7, no OS	<b>ECM2-i3:</b> Intel Core i3 3.3GHz HD2500, 2GB, 320GB, Windows 7, no OS <b>ECM2-i5:</b> Intel Core i5 3.6GHz HD4000, 4GB, 320GB, Windows 7, no OS

# elo TOUCH SOLUTIONS



To find out more about the extensive range of Elo Touch Solutions products, go to

**[www.elotouch.com](http://www.elotouch.com)**

or contact:

**Tel: +32 16 704 500**

**Fax: +32 16 704 549**

**[elosales@elotouch.com](mailto:elosales@elotouch.com)**

---

Elo Touch Solutions, Inc. its Affiliates (collectively "Elo") reserves the right to change or update, without notice, any information contained herein; to change, without notice, the design, construction, materials, processing or specifications of any products; and to discontinue or limit production or distribution of any products.

AccuTouch, CarrollTouch, Elo (logo), Elo Touch Solutions, Elo TouchSystems, IntelliTouch, iTouch, are trademarks of Elo and its Affiliates. Copyright 2013 Elo Touch Solutions, Inc. All rights reserved. October 2013.

**Medical and Healthcare Application Disclaimer:**

It is the sole responsibility of any person intending to commercialize, market or use any of Elo Touch Solutions, Inc. or its family of companies («Elo») products for medical or healthcare applications to ensure that such product is adequate and appropriate for the person's intended use and complies with all applicable laws, regulations, codes and standards including but not limited to the European Union Medical Device Directive, United States Federal Food, Drug, and Cosmetic Act, regulations of the United States Food and Drug Administration (FDA), and other similar legislation in jurisdictions around the world, and for obtaining and maintaining any required regulatory approvals including but not limited to any required market clearances. Elo has not sought nor received any rulings from the FDA or any other federal, state, or local government agency or notified body as to the safety, effectiveness or appropriateness of its product for such applications. Persons intending to evaluate or use Elo's product for medical or healthcare purposes must rely on their own medical and legal judgment without any representation on the part of Elo.

**[www.elotouch.com](http://www.elotouch.com)**