



Manual Removal of Elo Driver Remnants

NOTE: File deletions, and particularly registry key deletions, must be done with care. Deleting non-Elo files can cause problems with computer operations; in the worst case, improper deletions could necessitate reinstalling the operating system.

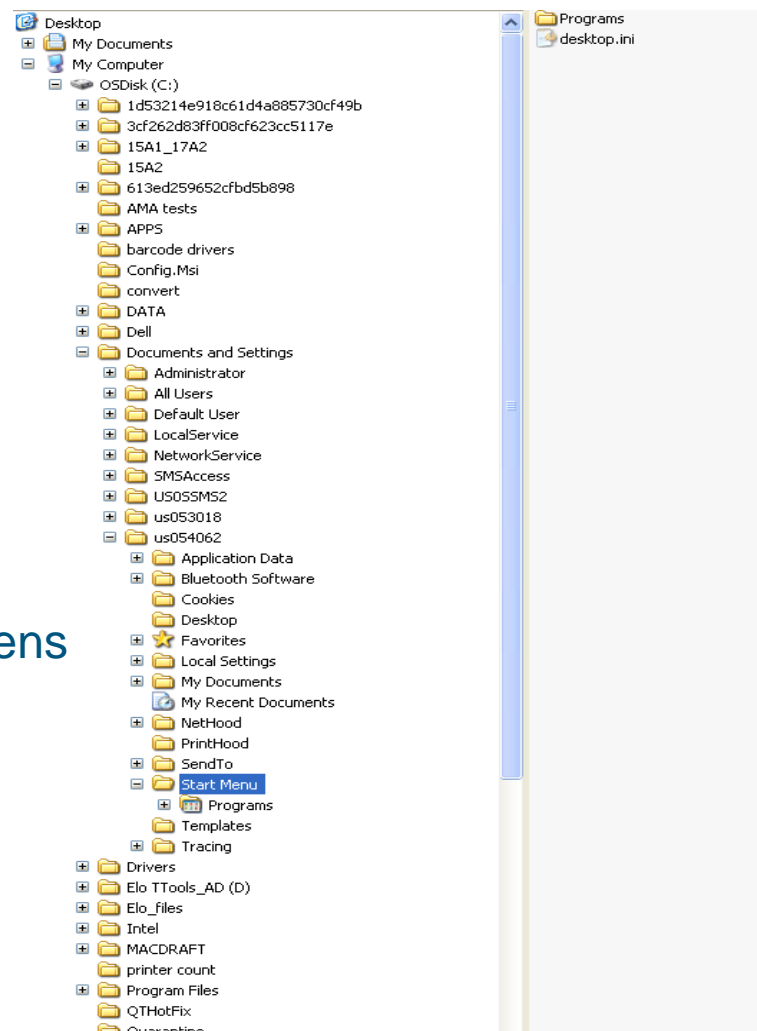
February 1, 2011

Open Windows Explorer



- Right-click the Start button and select Explore.

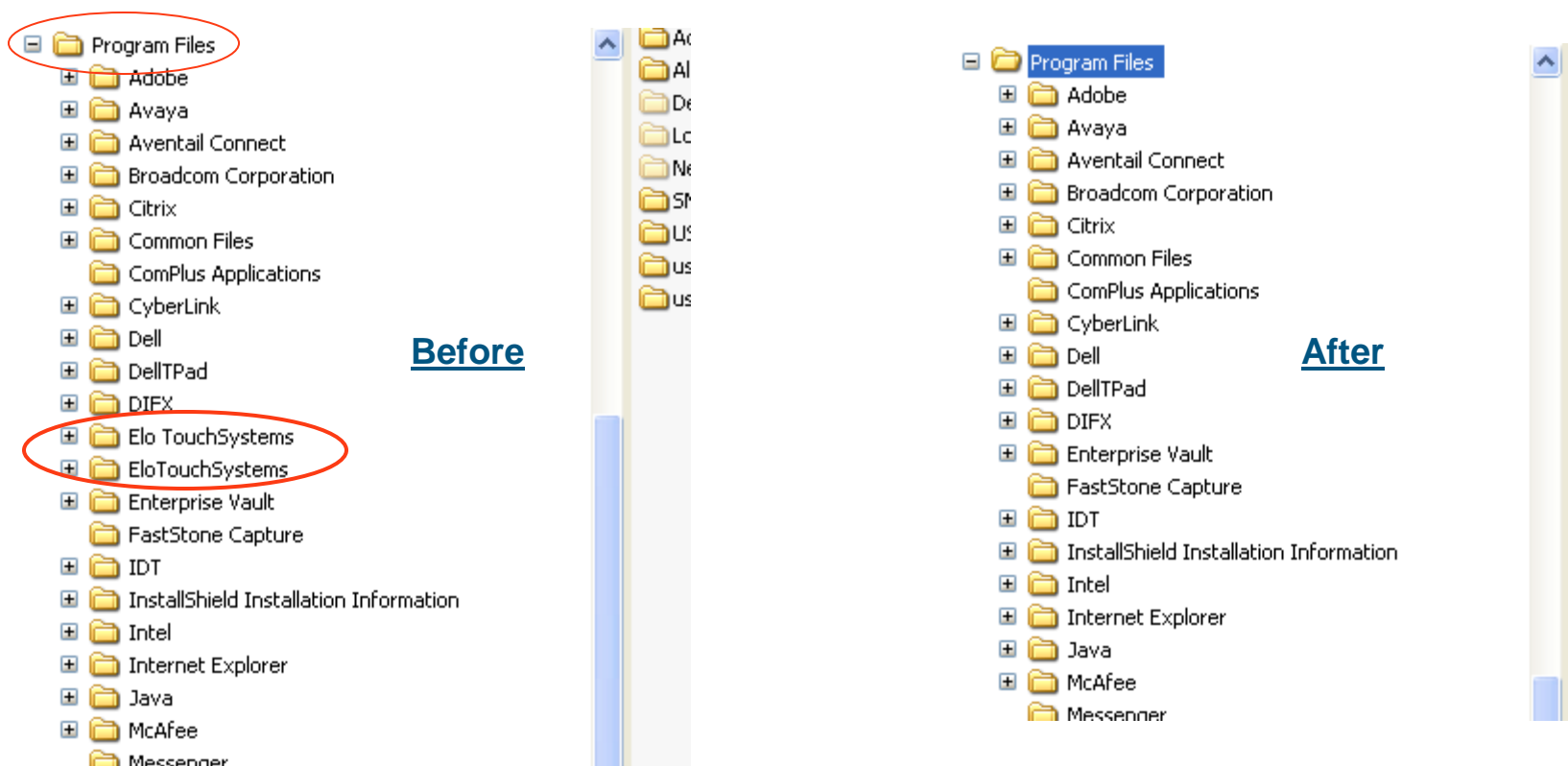
- Windows Explorer opens



Delete Elo folders

Scroll down to Program Files, click the + next to it to open

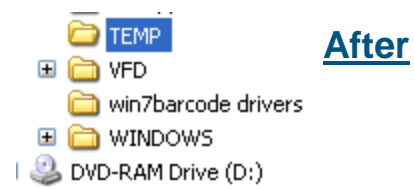
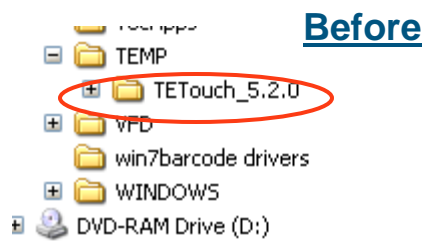
Elo folders that appear under Program Files: **right-click**, then choose Delete



Delete Elo folders

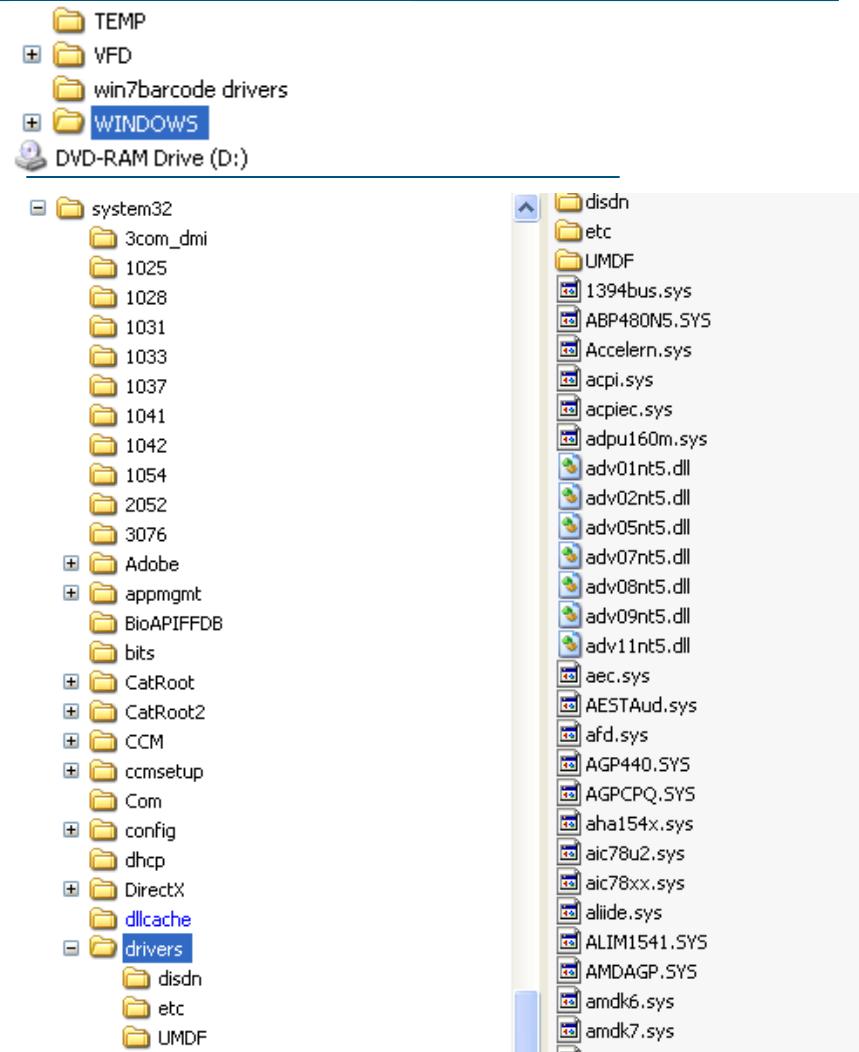
Scroll down to Temp, click the + next to it to open

TETouch folders that appear under Temp: **right-click**, then choose Delete



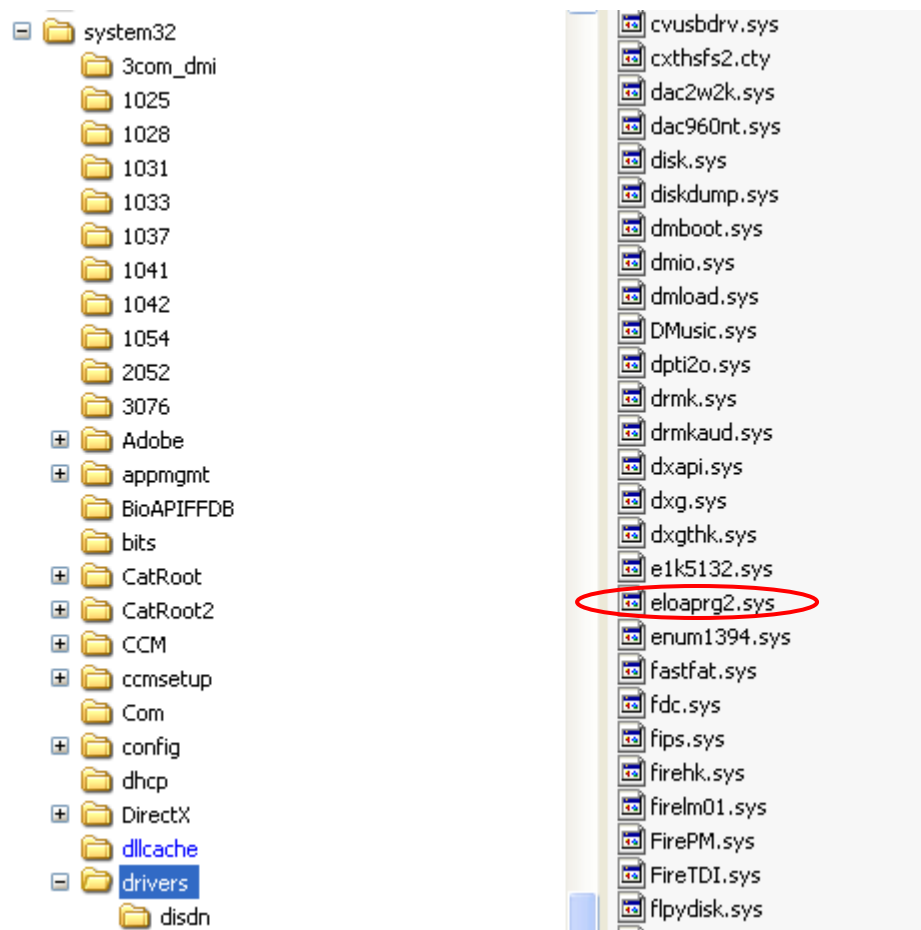
Open the \WINDOWS\system32\drivers folder

- Scroll down to WINDOWS
- Click the + next to it to open
- Scroll down to system32 under Windows
- Click the + next to it to open
- Scroll down to drivers
- Double-click the drivers folder so the files are visible on the right



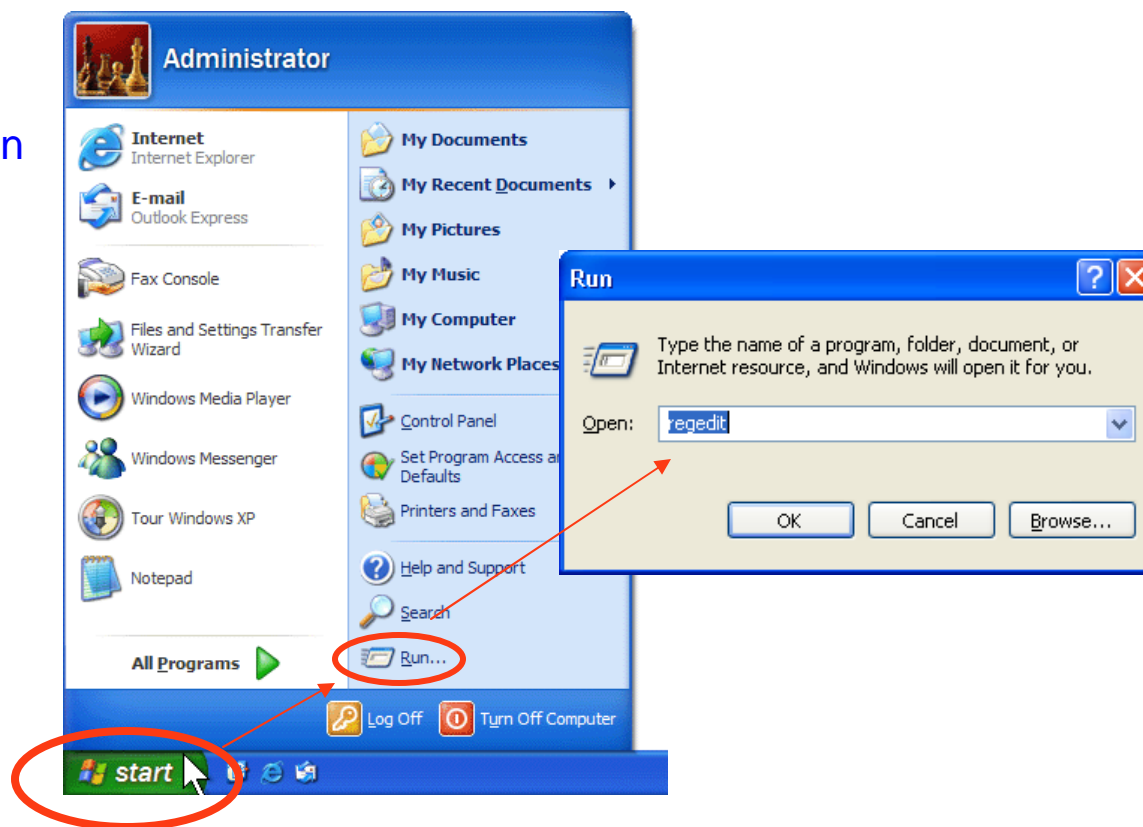
Delete Elo driver files

- On the **right side, scroll down** past the folders and through the files to the files that start with 'e'
- Delete all files that start with elo (unless they're obviously not Elo-related)
- Scroll down to the files that start with 'm'
- Delete all monmouse files
- Delete all mmstub files
- Click the close box in the upper right corner to close the Windows Explorer window



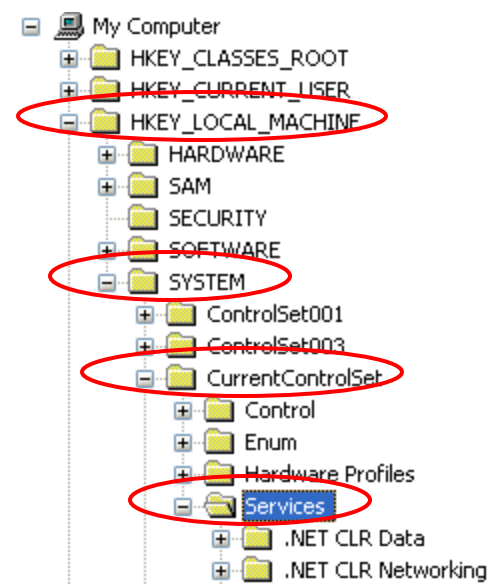
Open the registry editor

- NOTE: You must be logged on as administrator to run the registry editor (regedit)
- Click Start, then click Run
- Enter regedit in the text box
 - “enter” means type the text and hit the ENTER key



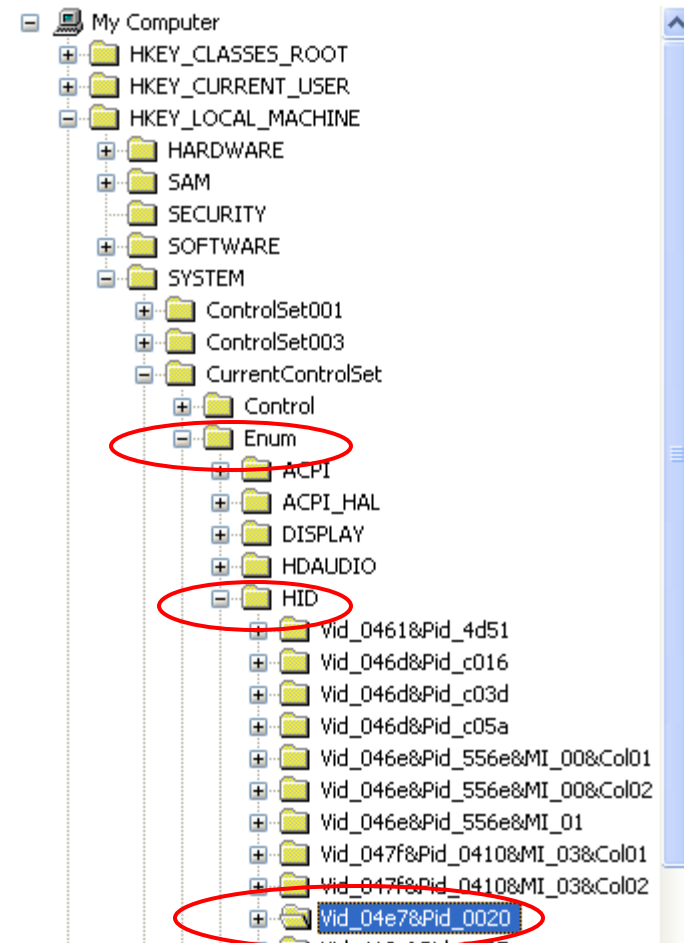
“Drill down” to HKLM, SYSTEM, CCS, Services and delete any Elo, monmouse or mmstub folders

- Click the + next to next to HKEY_LOCAL_MACHINE
- Click the + next to next to SYSTEM
- Click the + next to next to CurrentControlSet
- Click the + next to next to Services
- Scroll down through the folders below the System folder to find the folders that start with ‘e’
- Delete any folder that starts with Elo
- Scroll down to find the folders that start with ‘m’
- Delete any monmouse folders
- Delete any mmstub folders



“Drill down” to HKLM, SYSTEM, CCS, Enum, HID and delete any Elo Product ID’s (04e7)

- Go back up to the Services folder and click the – next to it to close it
- Click the + next to next to Enum
- Click the + next to HID
- For all (and *only*) Vid_04e7&Pid ... entries:
 - right-click, select Delete, Click Yes
 - If access is denied, see last page to set permissions
- Repeat for all 04e7 entries

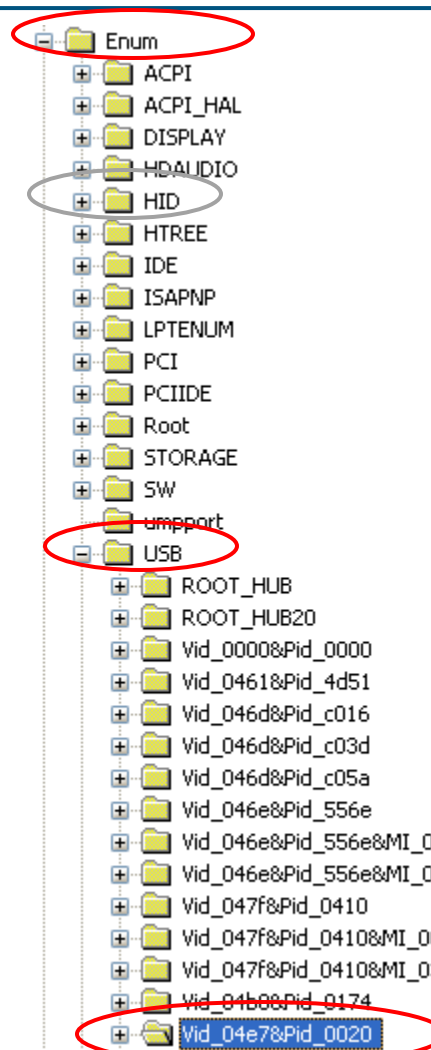


“Drill down” to HKLM, SYSTEM, CCS, Enum, USB and delete any Elo Product ID’s (04e7)

•Click the - next to HID to close it

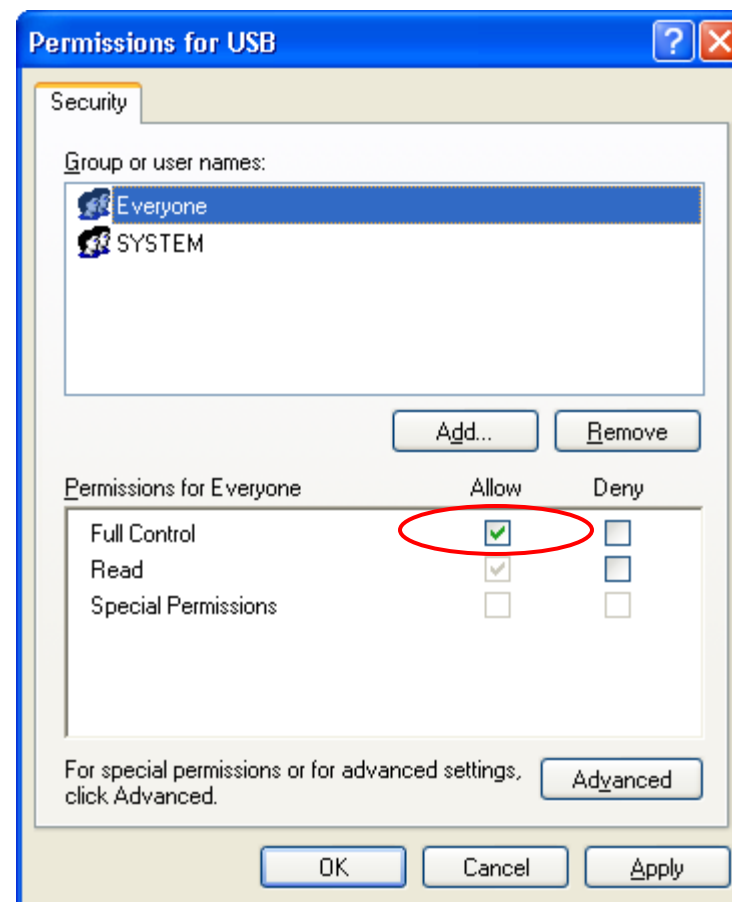
•Click the + next to USB to open it

•Delete all Vid_04e7&Pid ... entries



Overriding “access denied” to allow deleting Vid_04e7 registry keys

- In the menu at the top of the page, click Edit, then Permissions
 - Permissions window opens
- Click Everyone
- Click the Allow checkbox next to Full Control
- Click OK
- Delete the Vid_04e7 registry keys





Reboot the computer to finish

Close the regedit window

Reboot the computer